

TO COPY

GREENLAWNS SCHOOL, WORLI  
TERMINAL EXAMINATION: 2016-17  
BIOLOGY

Std: VIII

Marks: 80

Date: 30/09/2016

Time: 2 hrs

Answer to this paper must be written on the answer booklet provided to you.

The first 10 minutes are to be spent in reading the Question paper. The time given at the head of this paper is the time allowed for writing the answers. All questions are compulsory.

Do not waste paper. Leave only one line after each answer.

I A) Name the following: [10]

- i. The tissue present at the tip of roots and stems.
- ii. Mode of arrangement of flowers on the axis of the plant.
- iii. The first trophic level of a food chain.
- iv. The last molar of each side in each jaw.
- v. The scientist who observed cork cell and coined the term 'cell'.
- vi. Blood plasma that has oozed out of the blood vessels.
- vii. A yellowish green watery fluid produced in the liver.
- viii. Flower in which both male and female reproductive organs are lacking.
- ix. A semi-permeable membrane.
- x. Tissue found in the hard walnut shells.

B) State whether true or false. If false, correct the statement by changing the underlined word only. [5]

- i. Jejunum is the short upper part of small intestine next to stomach.
- ii. In hypogynous flower, ovary is inferior.
- iii. Plant cells contain large vacuoles.
- iv. Cardiac muscles are involuntary.
- v. Pepsin acts in alkaline medium.

C) Give one difference between the following pairs on the basis of what is indicated in the bracket. Answer only in tabular form. [5]

- i. Monoecious and dioecious plants (meaning)
- ii. Gir forests and Jim Corbett National Park (fauna)
- iii. Human child and human adult (dental formula)
- iv. Submandibular and sublingual glands (location)
- v. Cell and tissue (definition)

D) Write the functional activity of the following: [5]

- |                 |              |
|-----------------|--------------|
| i. Xylem        | iv. Steapsin |
| ii. Lysosomes   | v. Food Web  |
| iii. Parenchyma |              |

E) Define the following terms:

[5]

- i. Placenta
- ii. Food pyramids
- iii. Peristalsis
- iv. Prokaryotic cell
- v. Monadelphous

F) Rewrite and complete the following sentences by inserting the correct word in the space indicated: [5]

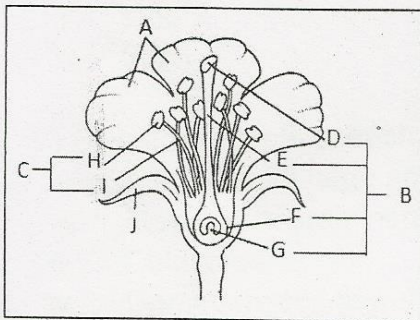
- i. The \_\_\_\_\_ parts of a flower are those that are directly concerned with reproduction.
- ii. The \_\_\_\_\_ is a small blind pouch situated at the junction of the small and large intestines.
- iii. The centrosome contains two \_\_\_\_\_ which are short bundles of microfilaments arranged at right angles to each other.
- iv. \_\_\_\_\_ tissue is situated below the bark and is responsible for increase in the diameter of the stem.
- v. \_\_\_\_\_ components include plants, animals and microorganisms.

G) Give scientific reasons for the following:

[5]

- i. Boiled rice when chewed thoroughly tastes sweet.
- ii. Some people call the mitochondria as "power houses of the cell".
- iii. Hibiscus is a perfect flower but palm is an imperfect flower.
- iv. Raw tomatoes are green in colour but ripe tomatoes are red in colour.
- v. There is a need to restore and conserve the ecosystem.

II A) The figure below represents the generalised arrangement of parts of a bisexual flower. Observe the figure and answer:



- i. Name the parts B, C, D, E, F and H. [3]
- ii. What do parts F and H contain? [2]
- iii. What would you call a flower in which: [2]
  - a) All part 'I' are united in several groups.
  - b) Has an undifferentiated A and J
- iv. State the function of A. [1]

B) Mention any four characteristics of meristematic tissue.

[2]

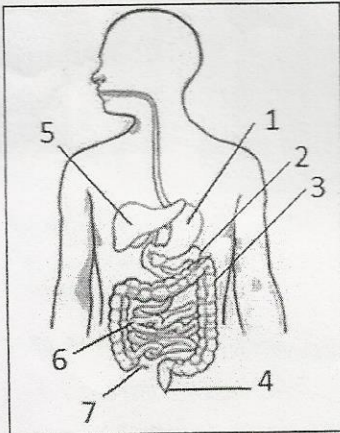
III A) Draw a neat diagram of internal structure of a canine and label the following parts – Enamel, dentine, pulp, root and cement. [3]

B) Why is nucleus considered to be the most important part of the cell? [3]

C) How is the ileum structurally adapted for absorption of food substances? [2]

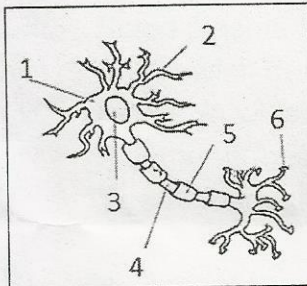
D) Give the exact location and function of collenchyma. [2]

IV) Observe the alimentary canal given below and answer the questions that follow:



- i. Label parts 1 to 7. [3½]
- ii. List the three enzymatic action from the juice given out by 2. [3]
- iii. Name the sub-regions of part 6. [1½]
- iv. Give the two pigments produced by the secretion of part 5. [2]

V A) Observe the figure given below and answer the questions that follow:



- i. Identify the structure. [½]
- ii. Label the parts 1 to 6. [3]
- iii. State the function of this structure. [1]

*the actual*

B) Write ~~General~~ meanings of the following: [1½]

- i. Oikos
- ii. auto
- iii. troph

C) Give an example of each: [2]

- i. A flower with large and colourful bract
- ii. Flower with prominent nectaries
- iii. Detrivores
- iv. Gamopetalous flower

D) State any two characteristics of an enzyme. [2]

\*\*\*\*\*