

GREENLAWNS SCHOOL, WORLI

Terminal Examination 2018

BIOLOGY

Std: VIII

Date: 24/09/2018

Marks: 80

Time: 2 hrs

Answer to this paper must be written on the answer booklet provided to you.

The first 10 minutes are to be spent in reading the Question paper. The time given at the head of this paper is the time allowed for writing the answers. All questions are compulsory. Do not waste paper. Leave only one line after each answer.

I A) Name the following: [5]

- i. Disease causing germs.
- ii. Movement of molecules from higher to lower concentration.
- iii. A plant which reproduces by leaves.
- iv. The animal prominently found in Jaladpara Sanctuary.
- v. Fine outgrowths of the lateral roots.
- vi. Protective membrane of the heart.
- vii. Causative agent of Chikungunya.
- viii. The fertilised egg.
- ix. Interconnected food chains.
- x. Blood vessels which open into the left atrium.

B) Complete the following statements: [5]

- i. The heart is divided vertically into a left and a right portion by a _____
- ii. The term ecosystem is derived from the Greek word _____
- iii. The idea of vaccination was conceived by _____
- iv. In grafting the plant receiving the bud or the shoot is called the _____
- v. Root hairs contain _____ which is of a higher concentration than the surrounding soil water.
- vi. _____ valves are present at the opening where the aorta leaves the left ventricle.
- vii. The organism at trophic level V of a food chain is called _____ consumer.
- viii. The technique of micropropagation is applied to _____ hybrids.
- ix. The vaccine for polio is _____
- x. Transpiration is _____ if the air is humid.

C) Define the following terms: [5]

- | | |
|------------------|------------------|
| i. Fertilization | iv. Hypertension |
| ii. Osmosis | v. Immunization |
| iii. Food chain | |

D) Give one difference between the following pairs on the basis of what is indicated in the bracket. (Answer only in tabular form) [5]

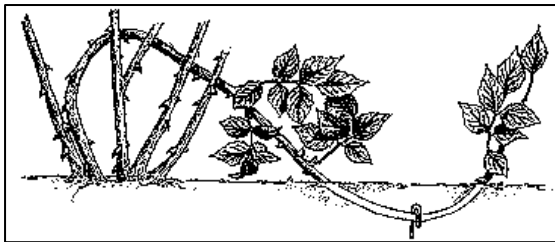
- i. Snake bite and bee sting (first aid)
- ii. Coronary artery and coronary veins (blood supply)
- iii. Scavengers and detritivores (meaning)
- iv. Wind and insect pollinated flowers (characteristic of pollen grains)
- v. Xylem and phloem (function)

- E) Give two examples of each of the following: [5]
- Diseases treated by using living weakened germs
 - Modified stems
 - Wind pollinated plants
 - Diseases which spread by droplet infection
 - Flora of the coniferous forests

- F) Mention one advantage of each of the following: [5]
- Food web
 - Tissue culture
 - Vegetative reproduction
 - Artificial pollination
 - Water for plants

- G) Give scientific reasons for the following: [2]
- The phenomenon of transpiration is important for plants. [2]
 - Fertilisation in flowering plants is called double fertilisation. [2]
 - Soil is the most important component of an ecosystem. [2]
 - Drinking alcohol is harmful for the health of an individual. [2]
 - Blood circulation in humans is said to be double circulation. [2]

II A) The figure below represents a method of artificial vegetative propagation.



- Identify this method. [½]
- How is this method carried out? [2]
- Give two examples of plants propagated by this method. [1]

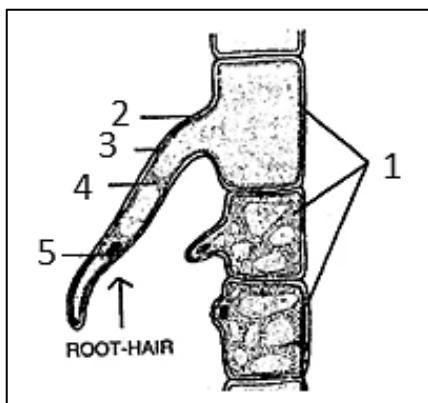
- B) Write short notes on: [4]
- Malaria
 - Fragmentation

C) Name the three macro-nutrients for the plants and state the role of any one. [2½]

III A) 'Normally, a person is said to be *healthy*, if he or she is not suffering from any *disease*.'

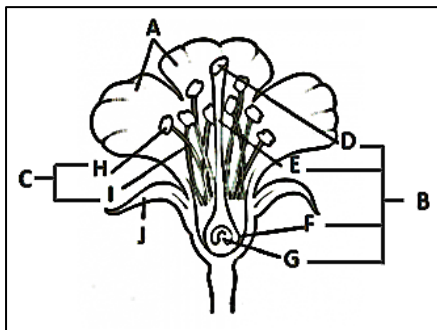
- Explain the meaning of the terms 'health' and 'disease.' [2]
- Differentiate between the two major categories of diseases. [2]
- Give an example of each of the above two categories. [1]

B) Given below is a highly magnified root hair. Observe and answer the questions that follow:



- Label the parts 1 to 5. [2½]
- What is a root hair? [1]
- Differentiate between parts 2 and 3. [1]
- How are roots useful to the plants? [½]

IV A) The figure below represents the generalised arrangement of parts of a bisexual flower. Observe the figure and answer:



- i. Name the parts B, C, D, E, F and H. [3]
- ii. What do parts F and H contain? [1]
- iii. State the function of A. [1]
- iv. What is the fate of F and J on fertilisation? [1]

B) Explain the term 'Symbiosis' with a suitable example. [2]

C) Mention two functions of lymph. [2]

V A) Give the full form of AIDS and HIV. [2]

B) Mention any four symptoms of Dengue. [2]

C) How does pollination takes place in Vallisneria? [2]

D) Draw neat labelled diagrams of the following:

- i. Stages of budding in yeast. [1½]
- ii. A food web using the organisms – Grasshopper, fox, grass, rabbit, owl and birds. [2½]
