

GREENLAWNS SCHOOL, WORLI  
TERMINAL EXAMINATION: 2020-21  
*BIOLOGY*

Std: X  
Date: 06/10/2020

Marks: 30  
Time: 1 hr

**SUBJECTIVE QUESTIONS (30 marks)**

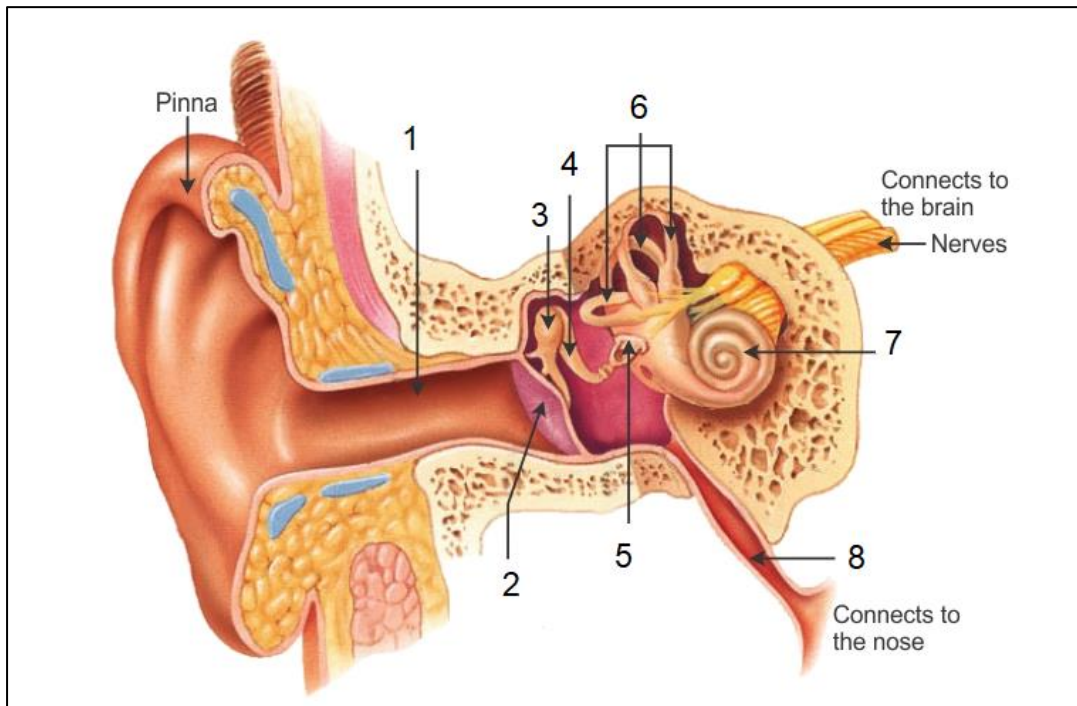
Q.1) Explain the following terms: [5]

a) Plasmolysis	d) Bleeding
b) Turgor pressure	e) Karyokinesis
c) Systole	

Q.2) Give one difference between the following pairs on the basis of what is indicated in the bracket. (Answer only in tabular form) [5]

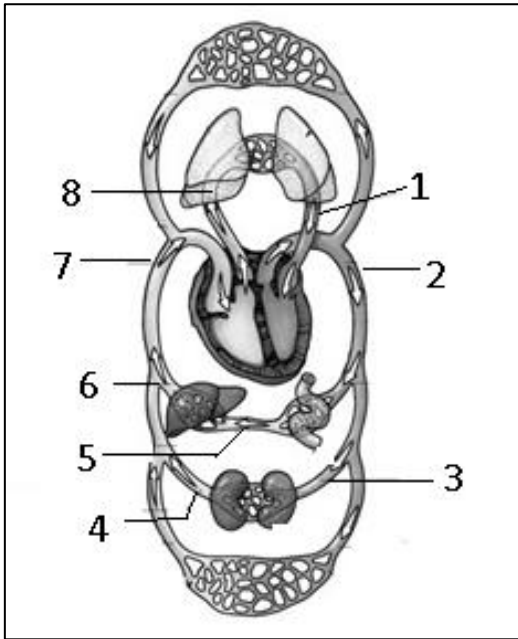
a) Metaphase and Anaphase (position of chromatids)
b) Mitral valve and Aortic semilunar valve (location)
c) Lymphocytes and neutrophils (shape of the nucleus)
d) Simple goitre and Exophthalmic goitre (cause of the disorder)
e) Cuticle and lenticels (location)

Q.3) The given diagram is of human ear. Study the same and then answer the questions:



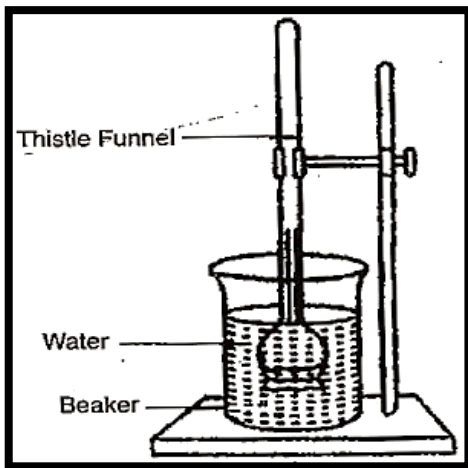
- |   |     |
|---|-----|
| a) What are the parts 3, 4 and 5 called together? State its function. | [1] |
| b) Name the two fluids present in part 7.                             | [1] |
| c) Give functions of parts 2 and 8.                                   | [2] |
| d) Label parts 1 and 6.   | [1] |

Q.4) The diagram below depicts blood circulation in the human body.



- a) Name the blood vessels 1 to 8. [4]
- b) Name the blood vessel that supplies the walls of the heart with oxygen. [½]
- c) Draw a neat and labelled diagram of the cross - sectional view of the blood vessel numbered '2'. [2½]

Q.5) The diagram below shows the set-up of an apparatus to study a very important physiological process:



- a) Explain the process being studied. [1]
- b) What change would you observe in the thistle funnel containing sugar solution after about 10 minutes? [1]
- c) What is the tonicity of the sugar solution? [½]
- d) Name the part of the plant cell which is represented by the sugar solution. [½]
- e) Explain why salt is added to pickles. [1]

Q.6) Mention any four adaptations in plants to reduce excessive transpiration. [2]

Q.7) Draw a neat and labelled diagram to show how myopia is corrected using an appropriate lens. [2]

\*\*\*\*\*