

GREENLAWNS SCHOOL, WORLI
TERMINAL EXAMINATION: 2020-21
BIOLOGY

Std: IX
Date: 03/10/2020

Marks: 30
Time: 1 hr

SUBJECTIVE QUESTIONS (30 marks)

Q.1) Explain the following terms: [5]

a) Inflorescence	d) Geitonogamy
b) Herkogamy	e) Dead air space
c) Peristalsis	

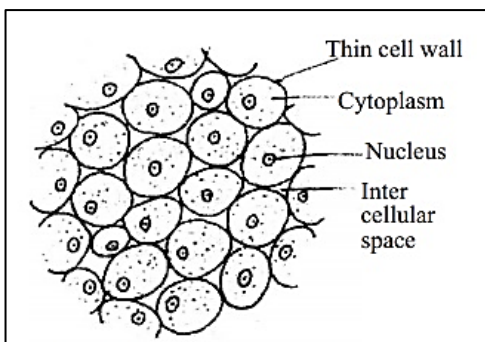
Q.2) Give one difference between the following pairs on the basis of what is indicated in the bracket. (Answer only in tabular form) [5]

a) Plant and animal cell (vacuoles)
b) Xylem and Phloem (function)
c) Staminate and pistillate flower (meaning)
d) Placenta and ovary wall (fate after fertilization)
e) Inspired air and Expired air (% of carbon dioxide)

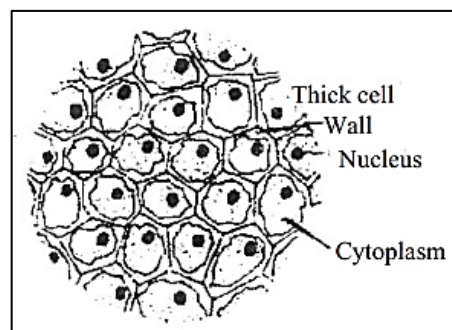
Q.3) The ileum is a very long and narrow coiled tube. Its inner lining is produced into a very large number of tiny finger-like processes called villi. Mention the utility of each of the following features of the intestine: [3]

a) Great length
b) Narrow diameter
c) Large number of villi

Q.4) Give the exact location and function of the following plant conducting tissues: [4]

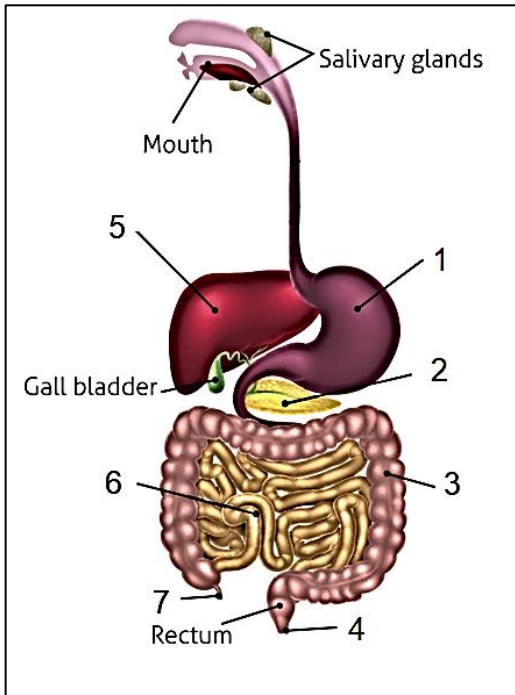


A



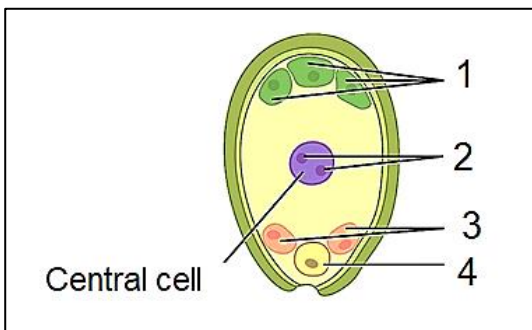
B

Q.5) Observe the alimentary canal given below and answer the questions that follow:



- a) Give two functions of the acid secreted by part 1. [2]
- b) State functions of enzymes of part 2. [2]
- c) List the three regions of part 3. [1½]
- d) Name two pigments secreted by the fluid of part 5. [1]
- e) Label parts 4, 6 and 7. [1½]

Q.6) The figure given below represents Ovule showing the embryo sac in it and the events occurring there.



- a) Label the parts 1 and 3. [1]
- b) Describe the changes taking place in part 2 on fertilisation. [1]
- c) What is the fate of part 4 on fertilisation? [½]
- d) Why are all the events in the ovule described as Double fertilisation? [1½]
- e) Draw a neat diagram of a mature pollen grain. [1]
