

# VIII-Biology Terminal Paper: 2020-21

Objective Type Questions (30 marks)

Duration: 1 hour

\* Required

1. Email address \*

---

2. Name of the student \*

---

Q.1) Name the following:

3. a) The conducting tissue which transports food prepared by the leaves to all parts of the plant. \* 1 point

---

4. b) The transfer of pollen grains from the anthers to the stigma of a flower. \* 1 point

---

5. c) A network of several inter-connecting food chains. \* 1 point

---

6. d) The universal recipient blood group. \* 1 point

---

7. e) The flattened part of the stalk of the flower. \* 1 point

---

Q.2) Fill in the blanks:

8. a) Heart is enclosed within a protective double-layered membrane called 1 point

\_\_\_\_\_ \*

\_\_\_\_\_

9. b) \_\_\_\_\_ forests are found in the Himalayas at an altitude above 1700 to 3000 metres. \* 1 point

\_\_\_\_\_

10. c) The root hair is a long protuberance of an \_\_\_\_\_ cell of the root. \* 1 point

\_\_\_\_\_

11. d) The ovary on fertilisation becomes the \_\_\_\_\_ \* 1 point

\_\_\_\_\_

12. e) Yeast cells reproduce by the method of \_\_\_\_\_ \* 1 point

\_\_\_\_\_

Q.3) Give two examples of each:

13. a) Plants pollinated by wind. \* 1 point

\_\_\_\_\_

14. b) Flora of the Tropical rain forests. \* 1 point

\_\_\_\_\_

15. c) Types of xylem tissue. \* 1 point

---

16. d) Propagation by grafting. \* 1 point

---

17. e) Propagation by Multiple fission in organisms. \* 1 point

---

**Q.4) Correct the following statements:**

18. a) Insect-pollinated flowers have long anthers light pollen grains. \* 1 point

---

19. b) The cell wall of a plant cell is semi-permeable. \* 1 point

---

20. c) The walls of the auricles are thicker, elastic and muscular. \* 1 point

---

21. d) Earthworms, millipedes, slugs, etc are said to be Detritivores. \* 1 point

---

22. e) The upward movement of water and minerals is called descent of sap. \* 1 point

---

**Q.5) Give one important function of each of the following:**

23. a) Transpiration \*

1 point

---

---

---

---

---

24. b) Coronary artery \*

1 point

---

---

---

---

---

25. c) Sunlight - An abiotic component \*

1 point

---

---

---

---

---

26. d) Mineral Zinc for plants \*

1 point

---

---

---

---

---

27. e) Lymph \*

1 point

---

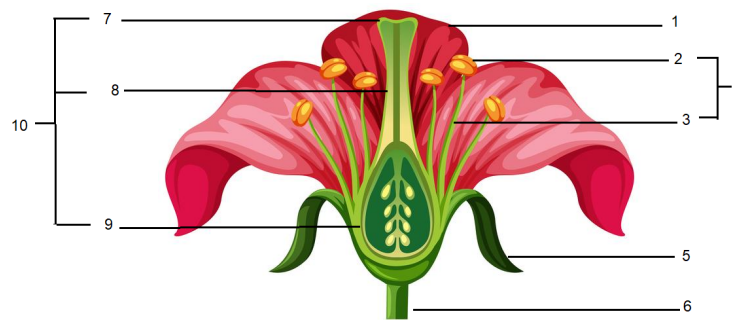
---

---

---

---

Q.6) Observe the typical flower given below:



28. Label the parts 1 to 10. \*

5 points

---

---

---

---

---

This content is neither created nor endorsed by Google.

Google Forms