

GREENLAWNS SCHOOL, WORLI
TERMINAL EXAMINATION: 2020-21
BIOLOGY

Std: VIII
Date: 25/09/2020

Marks: 30
Time: 1 hr

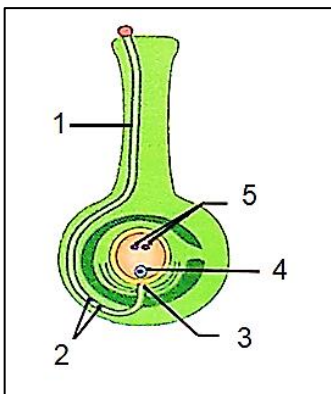
SUBJECTIVE QUESTIONS (30 marks)

- Q.1) Explain the following terms: [5]
- | | |
|-------------------|----------------------------|
| a) Osmosis | d) Scavengers |
| b) Food chain | e) Vegetative reproduction |
| c) Cardiac arrest | |

- Q.2) Give one difference between the following pairs on the basis of what is indicated in the bracket. (Answer only in tabular form) [5]
- | |
|---|
| a) Arteries and veins (direction of blood flow) |
| b) Xylem and Phloem (direction of conduction) |
| c) Cutting and layering (method of propagation) |
| d) Symbiosis and Parasitism (Examples) |
| e) Systemic and Pulmonary circulation (meaning) |

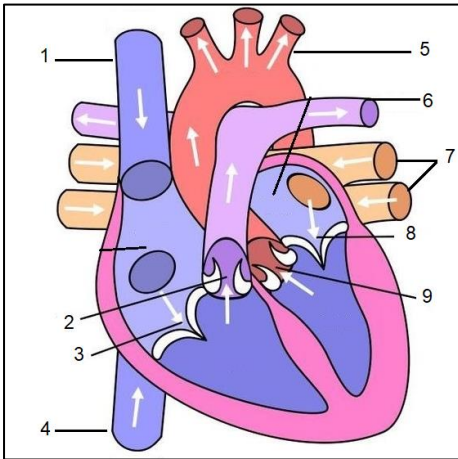
- Q.3) Give scientific reasons for the following: [3]
- | |
|---|
| a) There are numerous root hairs on the roots of a plant. |
| b) SAN is referred as the natural pacemaker of the heart. |
| c) Farmers prefer to grow certain crops by vegetative method. |

- Q.4) The figure given below represents the process of fertilisation in flowers. Observe and answer the given questions:



- | | |
|----------------------------------|------|
| a) Label the parts 1 to 5. | [2½] |
| b) Define fertilisation. | [1] |
| c) Explain Double fertilisation. | [1½] |

Q.5) The figure below represents internal structure of the human heart.



- a) Label the parts 1 and 4. [1]
- b) Name the valves 2, 3, 8 and 9. [2]
- c) Distinguish between parts 6 and 7. [1]
- d) State the function of part 5. [1]

Q.6) An apparatus as shown below was set up to investigate a physiological process in plants. The setup was kept in sunlight for two hours.



- a) Define the phenomenon being studied. [1]
- b) What will you observe in the set-up and why? [2]
- c) What is the importance of this phenomenon in plants? [2]

Q.7) Draw a neat and labelled diagram of a root hair – highly magnified. [2]
