

GREENLAWNS HIGH SCHOOL

FINAL EXAMINATION 2025-26

SUBJECT: GEOGRAPHY

CLASS: IX

TIME: 2 HOURS

MARKS:80

1. *Answers to this Paper must be written on the answer sheet provided separately.*
2. *You will not be allowed to write during the first 15 minutes.*
3. *This time is to be spent in reading the question paper.*
4. *The time given at the head of this Paper is the time allowed for writing the answers.*

5. *Part I is compulsory. All questions from Part I are to be attempted.*
6. *A total of five questions is to be attempted from Part II.*
7. *The intended marks for questions are given in brackets [ ].*
8. *In all Map work, make wise use of arrows to avoid overcrowding of the map.*
9. *The Map given at the end of this question paper must be detached, and after marking, must be fastened at the end to your answer booklet.*
10. *All sub-sections of the questions attempted must be answered in the correct serial order.*

**PART I (30 Marks)**

*(Attempt all questions from this Part.)*

**Question 1**

**[10]**

Read the following questions and choose the most appropriate response from the choices given below (Please do not copy the question- simply write out in correct serial order the appropriate word or phrase.)

1. Due to the \_\_\_\_\_ the direction of the currents changes from south-west in summer to the north east in winter.
  - a) Temperature
  - b) Trade winds
  - c) Westerlies
  - d) Monsoon winds

2. All weather conditions occur in the \_\_\_\_\_.
- a) Stratosphere
  - b) Ionosphere
  - c) Thermosphere
  - d) Troposphere
3. Horizontal movement of air is called \_\_\_\_\_.
- a) Wind
  - b) Millibar
  - c) Air current
  - d) Isobar
4. Factors favouring evaporation are \_\_\_\_\_.
- a) Humidity
  - b) Supply of heat
  - c) Winds
  - d) All of the above.
5. Which of the following is **NOT** a source of soil pollution?
- a) Chemical fertilizer
  - b) Vehicle
  - c) Pesticide
  - d) Biomedical waste
6. Vertical air currents push water droplets or ice particles higher and form solid ice and fall as \_\_\_\_\_.
- a) Hail
  - b) Fog
  - c) Rain
  - d) Mist
7. Tropical Cyclones are known as \_\_\_\_\_ in eastern China.
- a) Hurricanes
  - b) Willi willies
  - c) Typhoons
  - d) Jet streams
8. The boundary zones of hot and cold air masses are known as \_\_\_\_\_.
- a) Fronts
  - b) Dew
  - c) Frost
  - d) Mist
9. The pollutants which are directly introduced by their sources in the environment are called \_\_\_\_\_ pollutants.
- a) Secondary
  - b) Bio degradable
  - c) Primary
  - d) Non bio degradable

10. \_\_\_\_\_ is a local cold wind which blows from the Alps over France towards the Mediterranean Sea bringing down the temperature below freezing point.
- a) Chinook
  - b) Loo
  - c) Mistral
  - d) Foehn

### Question 2

[10]

Answer the following questions:

- 1) a) What is the Normal Lapse rate?  
b) The earth is cooler at higher latitudes than on the earth's surface. Explain.
- 2) a) Define pressure gradient.  
b) What does close spacing of isobars indicate?
- 3) Differentiate between fog and mist.
- 4) What are Quantitative and Qualitative pollutants?
- 5) Name two primitive tribes which inhabit in the tropical deserts.

### Question 3

[10]

On the blank world map provided to you, mark, label, and shade the following.

- (i) Waterbodies
  - a) South Pacific Ocean
  - b) Caribbean Sea
  - c) North Sea
  - d) Persian Gulf
- (ii) Mountains
  - a) Atlas
  - b) Urals
  - c) The Great Dividing Range
  - d) Caucasus
- (iii) Rivers
  - a) Mississippi
  - b) Paraguay
  - c) Zambezi
  - d) Rhine
  - e) Ganga
  - f) Murray
- (iv) Highlands
  - a) Canadian Shield
  - b) Iranian Plateau
- (v) Natural regions of the world
  - a) Tropical Monsoon
  - b) Mediterranean region in North America

## SECTION B

(Attempt any five questions from this section.)

[50 marks]

### Question 4

- 1) Differentiate between warm ocean currents and cold ocean currents. [2]
- 2) How does the earth's rotation cause ocean currents? [2]
- 3) Define the following: [3]
  - a) Hydrosphere
  - b) Waves
  - c) Tides
- 4) Draw a well labelled diagram depicting the occurrence of high tide and low tide. [3]

### Question 5

- 1) List two impacts of Global warming. [2]
- 2) a) Explain the term "Greenhouse effect". [2]
  - b) Name two greenhouse gases.
- 3) With reference to the Ionosphere, answer the following: [3]
  - a) What is the extent of the Ionosphere?
  - b) What are ions?
  - c) How is wireless communication possible in the Ionosphere?
- 4) List three functions of the atmosphere. [3]

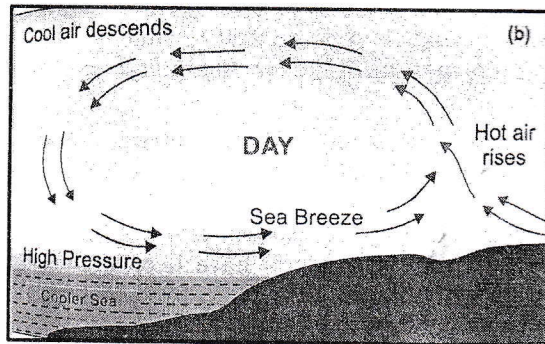
### Question 6

- 1) The port of Bergen remains ice-free whereas the north-east coast of Canada remains frozen, even though they are located on the same latitudes. Explain. [2]
- 2) Differentiate between conduction and convection. [2]
- 3) a) Explain the term Insolation.
  - b) Name four factors that affect the temperature of a place. [3]
- 4) Draw a well labelled diagram to show the heat zones of the earth. [3]

### Question 7

- 1) a) What is Coriolis force? [2]
  - b) How does it affect the planetary winds?
- 2) List two characteristics of Polar winds. [2]

- 3) Give geographical reason for the following: [3]
- The low-pressure belt is called doldrums.
  - The sub-tropical high-pressure belt is also called the Horse latitudes.
  - Chinook is beneficial for the ranches of east of the Rockies.
  - With reference to the diagram given below, answer the following. [3]



- Which periodic wind is shown in the picture?
- Explain how this periodic wind is formed?

### Question 8

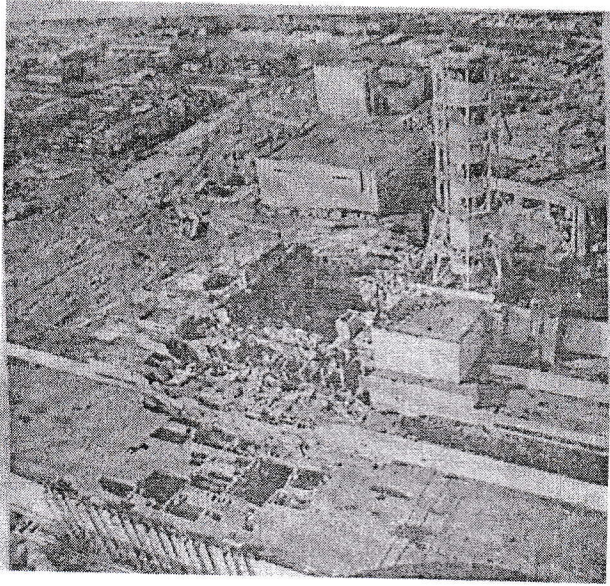
- Mention the three forms of precipitation. Which is the most common of all? [2]
- Define the following: [2]
  - Evaporation
  - Condensation
- Name and explain the shape of all three types of clouds. [3]
- Draw a well labelled diagram showing Relief rainfall. [3]

### Question 9

- Classify air pollution according to the state of matter. [2]
- What are fossil fuels? Name two fossil fuels. [2]
- List two short term and one long term effect of air pollution on human health. [3]

4) With reference to the following picture, answer the questions.

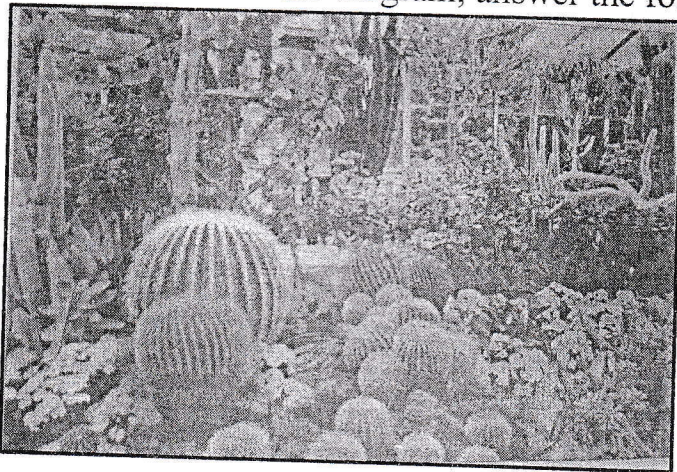
[3]



- a) Under which category does this disaster fall?
- b) Name a place in Europe where this disaster had occurred?
- c) Why is the area around where this disaster took place called the 'Red Forest'?

#### Question 10

- 1) a) State the location of the Tundra type of climate. [2]  
b) What type of climate is experienced in the Tundra region?
- 2) Where are tropical monsoon and tropical marine type of climates experienced? [2]
- 3) With reference to the diagram, answer the following.



[3]

- a) What type of natural vegetation does the picture refer to?
- b) List two characteristics of the plants that grow in this region.

4) Label the diagram.

[3]

