

GREENLAWNS HIGH SCHOOL

STD-VI

MATHS

MARKS-80

DATE: 27-02-26

FINAL EXAMINATION

DURATION-2 HOURS

NOTE: All working including rough work must be clearly shown and done on the same page as the rest of the answer. Omission of essential steps will result in loss of marks.

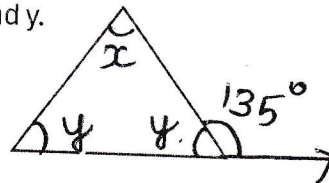
Q1] MULTIPLE CHOICE QUESTIONS: (10)

- 1) 1.03 as percent is
 - a) 0.103 %
 - b) 103 %
 - c) 10.3 %
 - d) 1.03 %
- 2) If distance is 35 km, time is 7 hours then speed is
 - a) 5 km hr⁻¹
 - b) 245 km hr⁻¹
 - c) 7 km hr⁻¹
 - d) 0.5 km hr⁻¹
- 3) If $4b = 28$, then $b =$ _____
 - a) 112
 - b) 28
 - c) 7
 - d) 0
- 4) In ΔJKL if $\angle J = \angle K = \angle L$ then $\angle J =$ _____
 - a) 60°
 - b) 65°
 - c) 70°
 - d) 80°
- 5) The area of a rectangle with length and breadth as 30 cm and 20 cm respectively, is
 - a) 60 cm²
 - b) 600 cm²
 - c) 30 cm²
 - d) 20 cm²

- 6) The median of 81, 20, 60, 75 and 50 is
- 81
 - 75
 - 60
 - 50
- 7) If one angle of a triangle is more than 90° then the triangle is known as
- obtuse angled triangle
 - acute angled triangle
 - right angled triangle
 - none
- 8) If $a - 7 = -8$ then $a =$ _____
- 1
 - 15
 - 15
 - 1
- 9) The distance covered by a car running at a speed of 82 km/hr in 6 hours is
- 429 km
 - 492 km
 - 14 km
 - 6 km
- 10) 28% as a fraction in its lowest term
- $\frac{28}{100}$
 - $\frac{14}{25}$
 - $\frac{28}{10}$
 - $\frac{7}{25}$

QII]

- A car covers 900 m in 3 mins. What is its speed in km hr^{-1} . (3)
- Solve: $36 - (3a + 12) = 5a$ (3)
- Observe the figure alongside and find the value of x and y . (4)



QIII]

1) A class contains 30 children out of which 6 are boys. What is the percentage of girls in the class. (3)

2) Solve: $p - 7\frac{1}{2} = 3\frac{1}{4}$ (3)

3) The perimeter of a square ground is 320 m. (4)

Find : i) Area

ii) Cost of levelling the ground at ₹35 per sq m.

QIV]

1) Find the perimeter of a rectangle whose area = 125 m^2 and breadth = 5 m. (3)

2) The mean of 26, 13, 12, x and 10 is 44. Find the value of x. (3)

3) In an exam Amit scored 48 marks out of 60 in Math and 35 marks out of 50 in Science. Find (i) The percentage of marks for each subject. (4)

(ii) In which subject he secured more percentage.

QV]

1) Evaluate. 30% of ₹ 200 + 15% of ₹ 360 - 9% of ₹ 400. (3)

2) A car covers 220 km in 6 hours.

Find : i) speed

ii) Distance covered by the car in 3.3 hours

(speed remains same throughout the journey) (3)

3) A) If the observations 36, 23, $(x-3)$, 17 and 12 are arranged in descending order and the median is 18. Find the value of x. (2)

B) Find the mean of first 6 odd numbers (2)

QVI]

1) $7y - 18 = y - (2y - 6)$ (3)

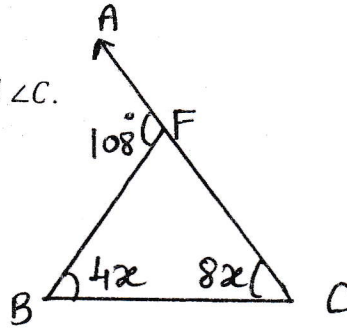
2) One angle of a right-angled triangle is 65° . Find the other angle. (3)

3) A rectangular garden is 80 m long 65 m wide. Whereas a square garden has each side 70 m. Calculate the cost of putting a fence around each garden at the rate of ₹ 32 per metre. (4)



QVII]

- 1) Find the value of x and hence find $\angle B$ and $\angle C$.



(3)

- 2) Find the median of 3, 4, 2, 7, 6, 9

(3)

- 3) Seema travelled to a city and covered 120 km by a bus moving at a speed of 60 km hr^{-1} and the rest of the distance 45 km was covered by a car at 30 km hr^{-1} .

Find the average speed of the entire journey.

(4)

QVIII]

- 1) The length of a rectangular plot is 12m and breadth is 6m.

(3)

Find: i) Area

ii) Perimeter

- 2) The weight of 6 girls in class VI is 45 kg, 42 kg, 50 kg, 32 kg, 34 kg and 52 kg. Find the average weight.

(3)

- 3) Anil drives a truck with a speed of 55 km hr^{-1} in 3 hr 12 mins. Find the time taken by Rohit to cover the same distance by his bike at the speed of 44 km hr^{-1}

(4)

ALL THE BEST