

GREENLAWNS SCHOOL, WORLI
TERMINAL EXAMINATION -2018
SCIENCE

STD:VI
DATE: 01 / 10 /2018

MARKS:80
TIME:1½hrs

NOTE: Attempt all questions.

All diagrams to be done in pencil only.

All answers to be written on the answer booklet provided.

- QI) Fill in the blanks: [5]
- a. A solution is a uniform mixture of a _____ and _____.
 - b. _____ technique may be used to remove cream from milk.
 - c. _____ process can be used to get clear water from muddy water.
 - d. The _____ of the seed develops into a stem and the _____ develops into a root.
 - e. The _____ and _____ of an artery due to heart beat is called pulse.
 - f. Tyre grip is better on _____ roads than on _____ roads.
- QII) State whether the following statements are true or false. If false, correct the false statement. [5]
- a. A wedge with a sharp edge can split a block of wood with less pressure.
 - b. Friction is a non-contact force.
 - c. Oxygen gas is released during photosynthesis.
 - d. The innermost layer of the fruit is called the epicarp.
 - e. The solid waste excreted from the human body is called urea.
 - f. A sieve is used to separate gravel from sand.
 - g. A saturated solution is one which cannot dissolve more solute at a given temperature.
- QIII) Name the following: [8]
- a. Any two solid states of water found in nature.
 - b. Any two water borne diseases.
 - c. Any two symptoms of indigestion.
 - d. The S I unit of force.
 - e. A plant that reproduces with the help of its leaves.
 - f. A plant whose leaves are modified into tendrils.
 - g. Any one storage root.
 - h. The different blood groups.
 - i. The full form of TB.
 - j. The instrument to measure blood pressure.
- QIV A) Give scientific term for the following: [3]
- a. The muscular sheet present below the lungs.
 - b. The green colour pigment in plants.
 - c. a pair of spongy elastic bag.
 - d. Two or more substances combined together in a fixed ratio.
 - e. Lack of water in the human body.
 - f. Arrangement of leaves on a stem.

B. Match the following:

[5]

Column A	Column B
a. Pollution	1. From a distance
b. Bore well	2. Oranges and lemons
c. Evaporation	3. Convert fats into fatty acids and glycerol
d. Sedimentation	4. Apples and pears
e. Muscular force	5. Convert proteins to amino acids
f. Electrostatic force	6. Underground water
g. Berries	7. Sea salt
h. Pomes	8. Industrial waste disposed in rivers
i. Trypsin	9. Muddy water
j. steapsin	10. contact force

QVA) Define the following terms:

[5]

- a. Pressure
- b. Fertilization
- c. Digestion
- d. Winnowing
- e. Water Pollution

QV B) Differentiate between the following:

[8]

- a. Self pollination and Cross pollination [definition]
- b. Inspiration and Expiration [Role of the diaphragm and chest cavity]
- c. Mixture and Compounds [Any two examples for each]
- b. Pharynx and larynx [function]

QVI) Answer the following questions:

[10]

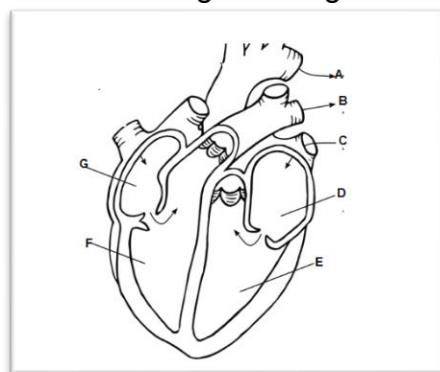
- a. Give any two functions of the salivary glands. [2]
- b. State the different methods of seed dispersal in plants. [2]
- c. List any two characteristics of a stem. [2]
- d. Mention any two ways how we can prevent water pollution. [2]
- e. State any two advantages of friction. [2]

QVII) Give scientific reasons for the following:

[10]

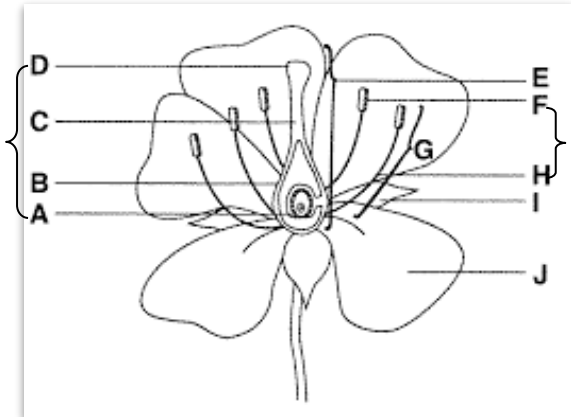
- a. Plants must have roots to grow.
- b. A mixture is an impure substance.
- c. The water cycle helps to sustain life.
- d. Fruits are an essential part of a plant .
- e. We must breathe through our nose only.

QVIII A) With reference to the given diagram answer the questions that follow: [7]



- a. Label parts 'A' to 'G'. [3½]
- b. To which body system does this part belong? [½]
- c. Name any two valves of this organ. [1]
- d. Name any two components of the body fluid flowing through this Organ. [1]
- e. List any two importance tips to keep this organ healthy. [1]

B) Observe the given diagram and answer the questions that follow: [9]



- a. . label parts 'A' to 'J' [5]
- b. State main function of this figure. [½]
- c. What is the function of 'I' and 'J'? [1]
- d. Which is the male and female whorl of a flower? [1]
- e. Distinguished between the complete and incomplete flower. [1]
- f. What is the thalamus? [½]

C) Draw a neat labeled diagram of parts of a leaf. [5]
