

6

GREENLAWNS HIGH SCHOOL  
FINAL EXAMINATION 2016-17

SUB: ENVIRONMENTAL STUDIES  
TIME: 1½ HOUR

STD: V A/B/C  
MARKS: 80

Section A

(Answers to all the questions in this section should be written on the question paper itself.  
Detach Section A and attach it to the main answer booklet.)

Q I

A] Fill in the blanks with a suitable answer.

10

1. \_\_\_\_\_ was built by Shahjahan on the banks of the river Yamuna.
2. Wrestlers are also known as \_\_\_\_\_ in India.
3. \_\_\_\_\_ is also known as the missile man of India.
4. The earth is covered with huge plates of rocks called \_\_\_\_\_.
5. The total solar eclipse can last for a maximum of \_\_\_\_\_ minutes.
6. Jantar Mantar was built by \_\_\_\_\_.
7. \_\_\_\_\_ objects form faint shadows.
8. The 'Snake boat' is also known as \_\_\_\_\_ in Kerala.
9. \_\_\_\_\_ is the main gateway of the Golconda Fort.
10. \_\_\_\_\_ are games in which a person has to perform on his/her own.

B] Read the sentence carefully and state whether true or false. If false, rewrite the correct sentence.

5

1. An earthquake of more than **5 magnitude** on a Richter scale in the ocean can give rise to a tsunami. \_\_\_\_\_
2. Rani Laxmi Bai was the queen of a princely state ruled by **Mughals**.  
\_\_\_\_\_
3. **Lata Mangeshkar** founded the Missionaries of Charity in Kolkata.  
\_\_\_\_\_
4. The **gall bladder** produces digestive juices.  
\_\_\_\_\_
5. The story of Indian architecture begins with the **Harappan culture**.  
\_\_\_\_\_
6. **Archery** is the most popular traditional sport of Maharashtra.  
\_\_\_\_\_

Q II

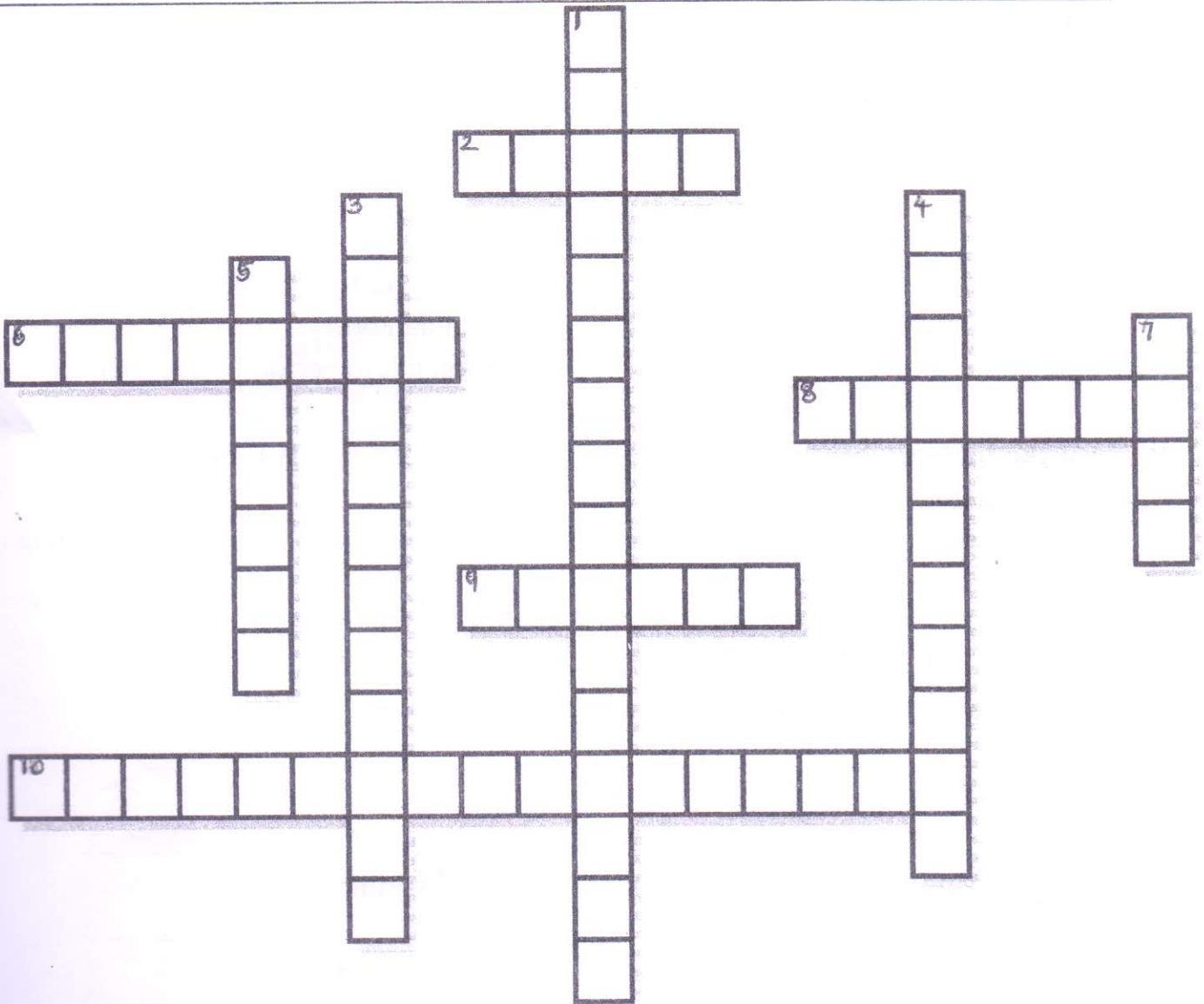
A] Neha did not attend classes for few days. She has missed out on many topics. Her EVS teacher has asked her to complete a puzzle in the class with some help from her friend. Neha is confused and unable to solve it. She asks you for help. Kindly help her to solve the puzzle.

**Across:**

- 2 \_\_\_\_\_ eclipse cannot be viewed with the naked eye.
- 6. It means that the sun stand still
- 8. A storm with strong winds and heavy rains.
- 9. Objects that form shadows.
- 10. He is a famous chess player.

**Down:**

- 1. Iron man of India.
- 3. Game is a \_\_\_\_\_ activity that you do for fun.
- 4. It is also called the Sun Temple.
- 5. A J- shaped flexible sack in the human body.
- 7. A year having 366 days



Match the following. {Write your answer as 1- A, 2-B}

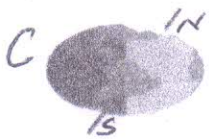
Column A	Column B
1. B.R Ambedkar	A. Tennis
2. Ritu Rani	B. Bile
3. Leander Paes	C. Hyderabad
4. Liver	D. Hockey
5. Golconda Fort	E. Badminton
Answers : 1 _____, 2 _____,	F. Architect of Indian constitution
3 _____, 4 _____, 5 _____	G. Jaipur

Q III

A)

Picture study

20



1. Identify the following

2

- A) \_\_\_\_\_
- B) \_\_\_\_\_
- C) \_\_\_\_\_
- D) \_\_\_\_\_

2. Write the dates of their occurrence.

- A) \_\_\_\_\_
- B) \_\_\_\_\_
- C) \_\_\_\_\_
- D) \_\_\_\_\_

3. Which seasons do Northern and Southern hemisphere experience in the following situation? 2

Situation	Northern Hemisphere	Southern Hemisphere
A		
D		

B|

1. Identify the personality. ½

\_\_\_\_\_

2. What is his occupation? ½

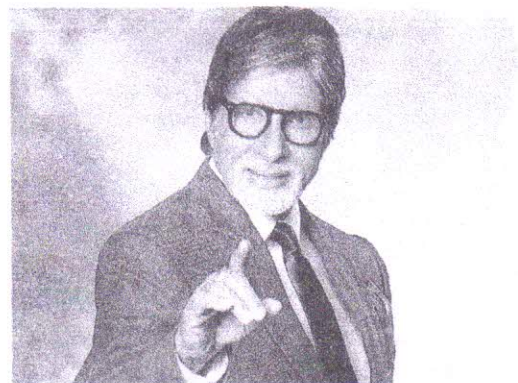
\_\_\_\_\_

3. What are his achievements so far? 1

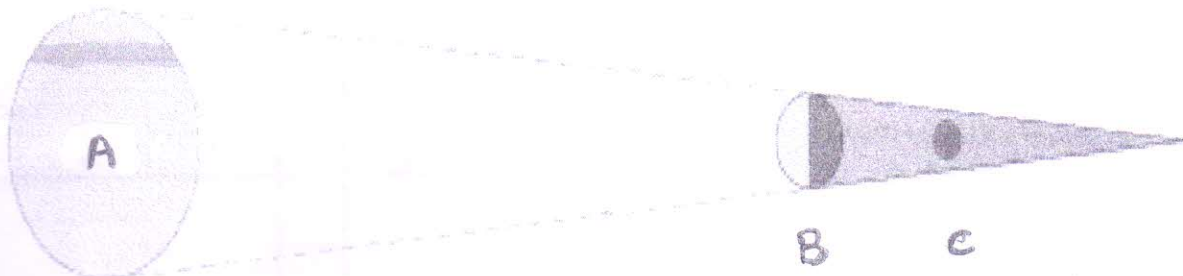
\_\_\_\_\_

\_\_\_\_\_

\_\_\_\_\_



C|



1) Identify the picture. ½

\_\_\_\_\_

2) Label the following:

1½

A \_\_\_\_\_

B \_\_\_\_\_

C \_\_\_\_\_

3) Explain the phenomena.

3

---

---

---

---

4) How does 'C' appear to the human eye during the occurrence of the event?

½

---



D] 1) Identify the personality.

½

2) Complete the sentence:

½

He is the captain of  
the \_\_\_\_\_

3) What are the three qualities that he should  
possess as a captain?

3

---

---

---

---

---

4) Name any two players from the same sport.

1

---

---

5) Explain the term 'Team Spirit'

1½

---

---

---

---

## Section B

(All the answers to this section must be written on the answer booklet.)

**Q IV Define the following.**

5

1. Glucose
2. Axis
3. Indoor games
4. Shadow
5. Tsunami

**Q V Briefly answer the questions.**

10

1. How does tongue help in tasting food?
2. Give one point of distinction between rotation and revolution.
3. State any two facts about the tsunami that occurred in December 2004.
4. What causes an earthquake?
5. How does light help in seeing an object. Give one characteristic of light.

**Q VI Give reasons for the following statements.**

5

1. Japan is called the Land of the Rising Sun.
2. During a calamity, we must not use a landline or a mobile phone.
3. Many historical buildings are declared 'Heritage Building'.
4. When we are hungry, a rumbling sound often comes from our stomach.
5. Seasons are important for humankind.

**Q VII Answer the following questions.**

15

1. Explain the formation of Day and Night.
2. State any three benefits of games and sports.
3. What precautions should we take during and after floods?
4. How should we take care of our great monuments?
5. How has Ratan Tata re-shaped the fortunes of Tata Group?



ALL THE BEST