

GREENLAWNS HIGH SCHOOL
TERMINAL EXAMINATION YEAR 2019

SUBJECT : MATHEMATICS

CLASS : VII

TIME : 2 HOURS

MARKS: 80

This paper consists of 2 sections – Section A and Section B.

All questions are compulsory.

Show working wherever essential.

All working to be done on the same page as rest of the sum.

SECTION – A

Q.I Fill in the blanks:- (10)

- a. When 3 or more points lie on the same straight line, then the points are said to be _____ points.
- b. The degree of $ab^3 - 6a^5b^7 + a^4b^4$ is _____.
- c. The coefficient of ay^2x in $-7a^2y^4x$ is _____.
- d. $8a + 5a =$ _____ and $8a \times 5a =$ _____.
- e. When the denominator of a fraction has values other than 10,100,1000, then such a fraction is known as _____ fraction.
- f. $\frac{27}{2}$ can be written in mixed fraction as _____.
- g. $\frac{76}{1000} =$ _____ (write in decimals)
- h. $0.12 + 1.12 + 0.012 =$ _____.
- i. $4.95 =$ _____ (convert to fractions in lowest term)

Q.II

- a. If there is enough food to last a party of 30 men for 16 days, how many men can manage with the same quantity of food for 24 days. (4)
- b. Evaluate: $(\frac{-3}{4} + \frac{7}{16} - \frac{-1}{8}) \div (1\frac{4}{7} [2\frac{1}{3} - (5 - \overline{3 - 4})])$ (3)
- c. Solve : $1.1(9.25 - 0.108) - (3.74 + 8.1)$ (3)

Q.III

- a. Compare $\frac{3}{4}, \frac{1}{2}, \frac{7}{8}, \frac{9}{16}$ by making their numerators equal. (4)
- b. Subtract 167.12 from the sum of 211.32 and 16.1611 (3)
- c. Kanti Verma saves 8% of his monthly salary. If his salary is Rs.4656.50, find how much does he spend every month. (3)

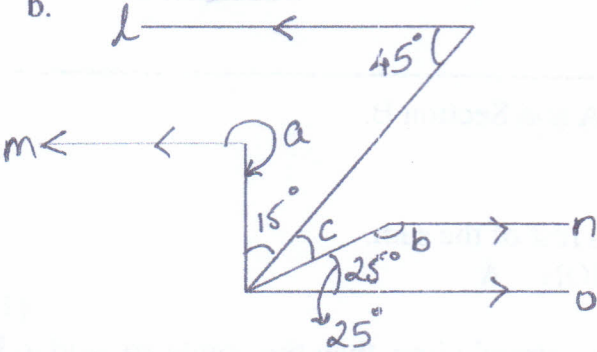
Q.IV

- a. An electrician sold two irons at Rs.960 each. On one he gains 20% and on the other he loses 20%. How much does he lose or gain on the whole transaction. (4)
- b. A number when increased by 45% becomes 725. Find the number. (3)
- c. Prasad sells a bicycle for Rs.248 and loses 7%. How much would he have gained or lost had it been sold for Rs.280. (3)

Section – B (Attempt all questions)

Q.V

- a. A man borrowed Rs.9200 from a bank at 9.5% p.a. on 30th June '2012. How much money did he give to the bank to settle the account on 11th Sept'2012. (4)

- b.  In the given figure, line l//line m//line n//line o. Find the value of a, b, c. (3)

- c. (i) Find the complement of (a) 55°
(b) $\frac{3}{8}$ of 120° (3)

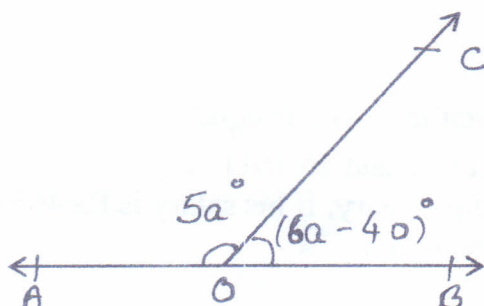
- (ii) Find the supplement of 80° .

Q.VI

- a. Ria takes 9 days to complete a particular work. The same work will be completed by Priya in 15 days. They both started working together, but after 5 days Priya left. Calculate the days taken by Riya to complete the remaining work. (4)

- b. Out of 1200 students in a school, 800 are boys and rest are girls. If 20% of the boys and 25% of the girls wear spectacles then find: (3)
- (i) Number of students who wear spectacles.
- (ii) The percent of students who wear spectacles.

- c. In the figure, find the value of 'a'. Hence find the value of $\angle COA$ and $\angle COB$. (3)



$$\angle AOC = 5a$$

$$\angle COB = 6a - 40$$

Q.VII

- a. Ritesh bought a wrist watch for Rs.400 and sold it to Mahesh at a gain of 10%; Mahesh then sold it to Ramesh at again of 5%. How much did Ramesh pay for the watch. (4)

- b. Divide: $(6x^3 + 5x^2 - 21x + 10)$ by $(3x - 2)$ (3)

- c. A sum of money triples itself in 5 years. Calculate the rate of interest. (3)

Q.VIII

- a. Simplify:- $(2x - 3)(x^2 - 5x + 6) - (3x^2 + 4x - 5)(x - 2)$ (4)
- b. A man borrowed Rs.5500 from a money lender at 16% p.a. simple interest. (3)
After some time he paid back Rs 8580. Find the time for which the money was borrowed.
- c. A small tank has an inlet and an outlet. The inlet can fill the tank in 4 minutes and the outlet can drain the tank in 6 minutes. If both the inlet and the outlet are kept open, how long will it take to fill the tank? (3)
