

GREENLAWNS HIGH SCHOOL
TERMINAL EXAMINATION YEAR 2019

SUBJECT : BIOLOGY
TIME : 1 ½ HOURS

CLASS : VIII
MARKS : 80

All answer must be written in the answer booklet provided separately. All questions are compulsory.

I Name the following: (10)

1. Living xylem cells that store food.
2. Osmosis always occurs through this membrane.
3. Type of reproduction seen in spirogyra.
4. It reproduces by growing young plantlets in the notches in the margins of their leaves.
5. The basic structural and functional unit of the nervous system.
6. The type of peripheral nervous system that controls the involuntary activities of the internal organs.
7. The natural pace marker of the heart.
8. The double layered protective membrane of the heart.
9. Organisms that carry pathogens from an infected person to a healthy person. (not an example)
10. A disease caused by HIV virus.

II A Distinguish between the following on the basis of what is given in brackets. (5)

1. Yeast and fern (method of reproduction)
2. Xylem and phloem (conduction of)
3. Right ventricle and left ventricle (nature of blood)
4. Sensory nerve and motor nerve (direction of impulse, from – to)
5. Typhoid and poliomyelitis (vaccine used)

B State whether true or false. If false, correct the statement by changing only the underlined word. (5)

1. Chikungunya is caused by a bacterium.
2. Transpiration increases the temperature of a plant.
3. The fusion of male and female gametes is known as pollination.
4. Chemical co-ordination is brought about by hormones.
5. The flow of blood is maintained by the continuous contraction of the heart muscles.

III A Pick the odd one out. Give reasons for your answers. (5)

1. Iron, manganese, potassium, zinc
2. Lymph, auricles, ventricles, semi lunar valve
3. Cerebrum, cerebellum, medulla oblongata, capillaries
4. Diabetes, malaria, goitre, hypertension
5. Zygote, explant, callus, plantlet

B Match the following

(5)

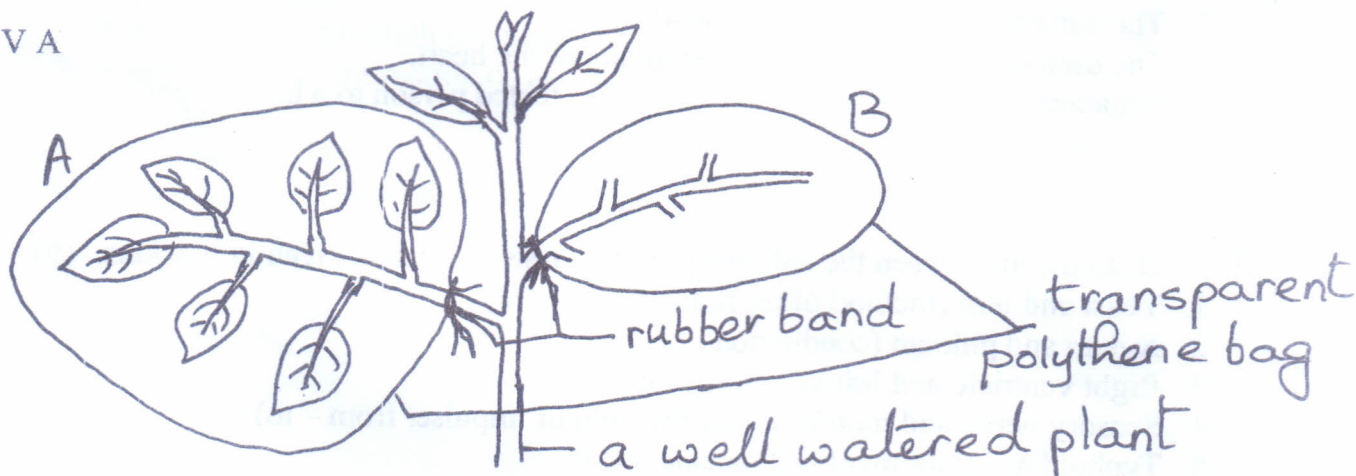
- | | |
|---------------|----------------------------|
| 1. Onion bulb | a. tracheids |
| 2. Synapse | b. droplet inflection |
| 3. Xylem | c. red blood cells |
| 4. Influenza | d. vegetative reproduction |
| 5. lymph | e. neurotransmitter |
| | f. sieve tubes |
| | g. white blood cells |

IV Give scientific reasons for the following:

(10)

1. Smoking is bad for health. (2 points)
2. Injury to the medulla may result in the death of a person. (2 points)
3. Veins have valves but arteries don't.
4. Farmers prefer to grow certain crops by vegetative method. (2 points)
5. Water is important for plants. (2 points)

V A



Observe the above figure and answer the questions given below:

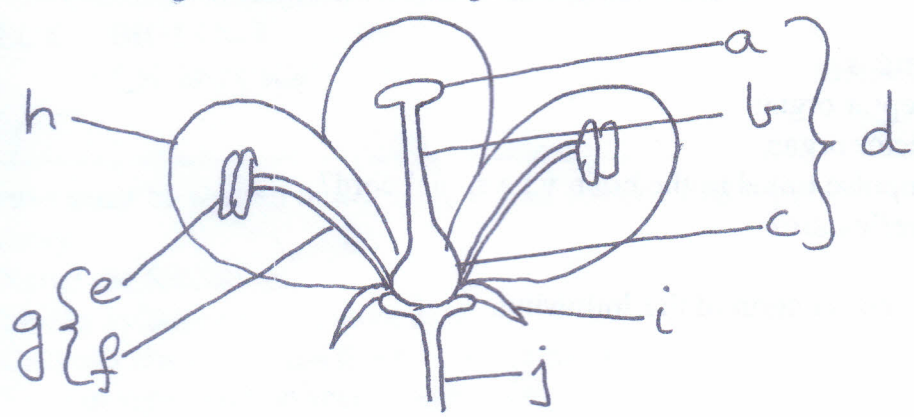
1. What would you observe after the plant has been placed in sunlight for a few hours? (1)
2. What do you conclude from this. (1)
3. Define the above process. (1)
4. How does this process help the plant. (2)

B Fill in the blanks.

(5)

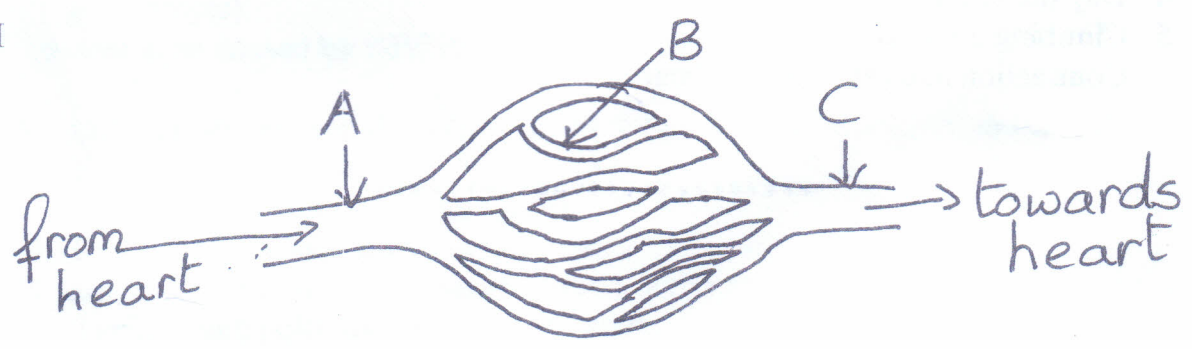
1. Malaria is caused by _____ which enters the human body through the bite of anopheles mosquito.
2. _____ vaccines use toxoids that are made harmless by the addition of formalin.
3. Applying _____ reduces irritation caused by a bee sting.
4. _____ is a process by which the body of an individual is made resistant to a specific disease by vaccination.
5. _____ breed in stagnant water and spread diseases like chikungunya.

VI Look at the figure and answer the questions that follow:-



1. Name the parts labelled d, g, i, j, a and b. (3)
2. Which part of the flower a or b or c or e or f, contains (1)
(a) Male gamete (b) female gamete
3. Define fertilization. (1)
4. Double fertilization is seen in flowers. Justify. (1)
5. State three characteristics of insect pollinated flowers. (3)
6. What is the fate of h and c after fertilization. (1)

VII



Look at the above picture of blood vessels and answer the questions that follow:

1. Name the vessels labeled A, B and C. (1 1/2)
2. Name the vessel that (1 1/2)
 - i. carry deoxygenated blood
 - ii. are deep seated
 - iii. have very fine, thin walls
3. Blood vessels are a part of the circulatory system. State its main functions. (2)
4. Ventricles of the heart are thicker and more elastic than the auricles. Why? (1)
5. Given in the box below are some words. Rewrite forming correct pairs. (3)
Pulmonary artery, aorta, universal donor, oxygenated blood, AB, O, pulmonary vein, universal recipient, right auricle, deoxygenated blood, left ventricle, vena cava
6. Name the heart related conditions whose symptoms are (1)
 - a. Sudden interruption of blood supply to the heart.
 - b. Heart suddenly stops pumping blood around the body.

VIII A A boy touches a sharp pin with his fore finger.

1. Name the (1 ½)
 - (i) Stimulus
 - (ii) Receptor organ
 - (iii) Effector organ
2. Will the impulse travel to the brain v.i.a spinal cord? (1/2)
3. What is a reflex arc? (1)

B State the main function of the following.

1. Cerebrum (4)
2. Spinal cord
3. Axon
4. Medullary sheath

C. The brain controls many functions of our body. Classify the functions according to the part of the brain responsible for them. Do it in tabular form. (3)

1. Riding a bicycle
2. Solving a difficult math problem mentally
3. Expansion and contraction of lungs
4. Day dreaming
5. Climbing a ladder
6. Contraction and relaxation of heart
