

GREENLAWNS HIGH SCHOOL
BIOLOGY EXAMINATION

60 MARKS

STD 9

Question 1

A) Name the following (10)

- i) Energy currency of the cell
- ii) An anticoagulant
- iii) Mineral present in bones
- iv) Number of chromosomes in humans
- v) Largest hole in the skeletal system
- vi) A unisexual flower with only stamens
- vii) Protective sheath around the plumule in the maize grain
- viii) A flower having bracts
- ix) A polysaccharide found in the liver of humans
- x) full form of DNA

QUESTION 2

A) The following questions are related to the skeletal system(5)

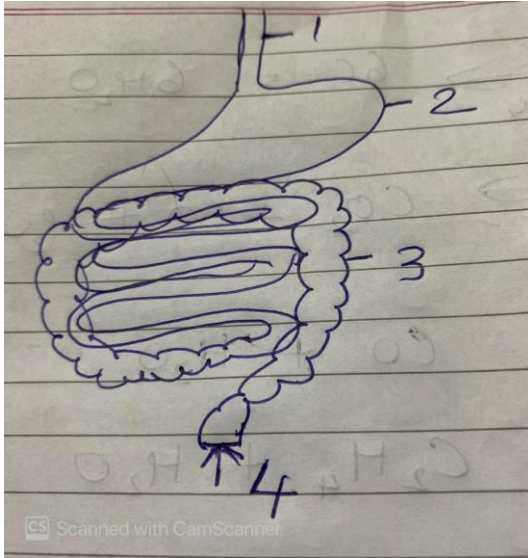
- i) List 2 functions of the same
- ii) Name the parts of the vertebral column. Give their numbers also.
- iii) Name the 3 types of muscle
- iv) Give an example of an immovable joint
- v) Arrange in the correct sequence
ulna, phalanges, humerus, carpal, metacarpal

B) Choose the odd one out Give a reason for your answer (3)

- i) saliva, sweat, blood, tears, HCl
- ii) nostrils, trachea, larynx. alveolus, bronchi
- iii) nucleus, mitochondria, cell wall, plastids, cell membrane

C) Draw an animal cell under the electron microscope and label any 4 parts (2)

QUESTION 3



A) Drawn below is a diagram showing a part of the digestive system.(5)

a) Identify parts 1, 2, 3 and 4.

b) Why is the small intestine narrow and long?

c) Name and give the location of the 3 salivary glands

B) Give one difference between the following pairs

(5)

i) Photosynthesis and Respiration (end products)

ii) Ligament and Tendon (Function)

iv) Hypoxia and Asphyxiation(definition)

v) cell wall and cell membrane

QUESTION 4

A) With respect to the inhalation phase of respiratory cycle ,answer the questions that follow

i) List 4 changes seen in the phase

ii) Give 2 differences between inhaled and exhaled air

iii) Give 2 differences between anaerobic respiration in plants and animals

B) Give the importance of the following (5)

i) villus

ii) bile

iii) epiglottis

iv) chlorophyll

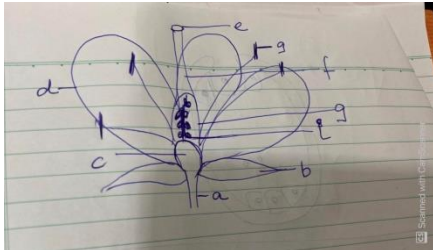
v) Joint

QUESTION 5

A) Give equations to show enzymatic reactions in the intestine of the following

- i) starch
- ii) peptides
- iii) emulsified fats
- iv) lactose

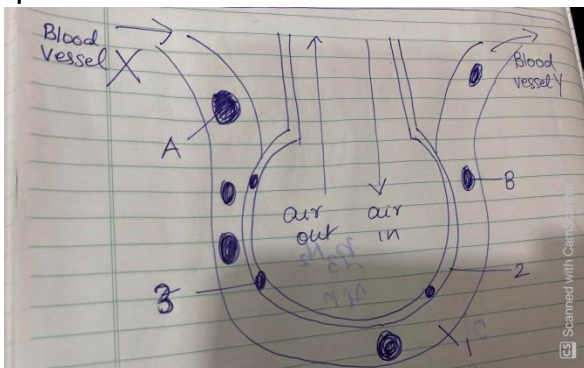
B) Drawn below is a diagrammatic representation of a flower (6)



- i) Label parts a ,b ,c and d.
- ii) What are parts e ,f and g known as collectively known as?
- iii) What is the importance of parts h and i?
- iv) Define allogamy.
- v) Why is fertilization in flowers known as double fertilization?

Question 6

A) Drawn below is a diagram showing the alveolus. Study it and answer the questions that follow. (5)



- i) Label parts 1,2.
- ii) Name blood vessels X and Y
- iii) What is the importance of structure 3?
- iv) What type of cells are present in lumen of the trachea?

B) Give reasons for the following statements.

- i) A plant cell has its nucleus on the side.
- ii) Anemophilous flowers have dry light pollen grains.
- iii) Respiration is a catabolic process,
- iv) We get excess pain when we exercise in excess
- v) seeds should not be sown too deep