

GREENLAWNS HIGH SCHOOL
TERMINAL EXAMINATION YEAR 2021 - 2022

SUBJECT :PHYSICS
TIME : 1Hour

CLASS: VIII
MARKS:40

INSTRUCTIONS FOR UPLOADING THE PAPER ON TEAMS

- ✚ Answers to this paper must be written on a composition sheet only. Answers on any other paper will not be accepted.
- ✚ Students must write their name, roll no., date, subject on the right- hand corner of the first page and all the remaining pages as well.
- ✚ Students must take a clear snapshot of the paper preferably with a document scanner or Microsoft lens if possible and only then convert it into a pdf file then upload on teams.
- ✚ Students must see to it that they have uploaded all the pages. If they miss out uploading any page it will not be accepted after the close date/time of the assignment.
- ✚ The time given at the head of the paper is the time allotted for writing the paper. Attempt all questions in Section A and Section B.
- ✚ Calculation to be shown on the same page as Numerical

Section A (20 Marks)
Attempt all the questions

Q1 . Fill in the Blanks: (Write answer only) (5)

- a. The rate of Evaporation of a liquid increases when humidity _____
- b. When a compressed spring is released _____ energy changes to _____ energy.
- c. The boiling point of a liquid _____ with increase in pressure.
- d. 1 H.P. = _____ W

Q2A) Match the Column: (3)

i) Pendulum of a clock	a) Thermal Expansion of liquids
ii) A moving truck	b) Atmospheric Pressure
iii) Camphor	c) Invar
iv) Thermometer	d) Thermostat
v) Drinking Straw	e) kinetic Energy
vi) Bimettalic Strip	f) Changes from Solid to Gas on heating

Q2B) Define Moment of Force ? State its S.I. Unit ?

(2)
p.t.o

- Q3) A) State True or False . If False correct the statement. (3)
- The temperature of a substance remains unaffected during its change of state
 - Potential Energy can be changed to any other form of Energy.
 - Less force is needed when applied at a farther distance from the pivoted point .

- B) State the energy changes in the following while in use: (2)
- Photoelectric cell
 - A Microphone

- Q4) A) Give reasons: (4)
- The rate of Evaporation increases when the surface area of the liquid is increased
 - The size of naphthalene balls decreases when left open.
 - Mountaineers have to wear special type of suits.
 - The bottom part of the foundation of a building is made wider.

- B) Name the type of Energy (Potential or Kinetic) Possessed by the following : (1)
- Water stored in a dam
 - A bullet fired from a gun

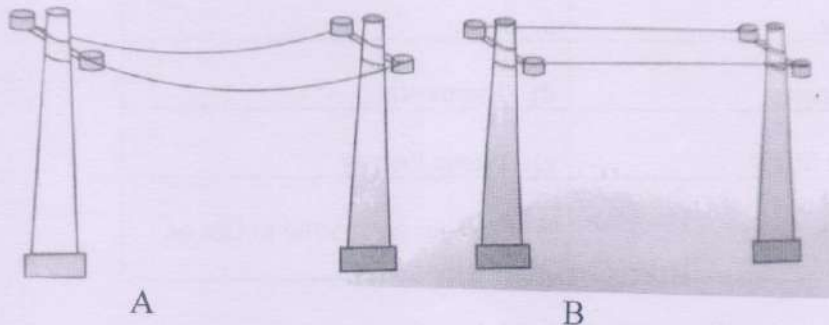
Section B (20 Marks)

Attempt all the questions

- Q5) Distinguish between: (5)
- Thrust and Pressure (S.I. Unit)
 - Work and Power (Definition)
 - Evaporation and Boiling (Temperature at which it takes place)
 - Gravitational Potential Energy and Kinetic Energy (expression for each)
 - Superficial expansion of solids and Cubical Expansion of solids (Definition)

- Q6) A) Find the odd one out [state the reason for your swer] (2)
- A stretched bow, a compressed spring, rock on a high hill, Car in motion.
 - Sugar, wood, plastic, Helium

- B) Choose from below how the Electric wires are placed during summer and winter ? Give reason for each case.? (3)



Q7) A) A pair of bullocks exerts a force of 140 N on a plough. The field being ploughed is 1500 cm long. How much work is done in ploughing the length of the field? (3)

B) A lamp consumes 1000J of electrical energy in 10 s . what is its power. (2)

Q8)A) In which of the following cases state with YES or NO whether work is done or not Give reason for your answer (2)

- i. A donkey carrying load on his back
- ii. A boy swimming in a pool

B) A Glass bottle is filled with water as shown below. If the bottle is placed upside down how does the (2)

- i. Thrust change
- ii. Pressure change. Give reason for your answer.



C) Two Iron rods one 15m long and the other 5 m long are heated to the same rise In temperature. Which will Expand more ? Why? (1)
