

**GREENLAWNS HIGH SCHOOL**  
**SCIENCE 1<sup>ST</sup> TERM EXAMINATION 2022-23**

**STD.7**

**TIME: 1.5 Hr.**

**DATE:20/9/2022**

**MARKS: 60**

**NOTE:**

- 1] Answer to this paper must be written on the paper provided separately.
- 2] You will not be allowed to write during the first 10 minutes. This time is to be spent in reading the paper.
- 3] The time given at the head of this paper is the time allowed for writing the answers.
- 4] Section A and B both are compulsory.
- 5] The intended marks for a question or parts of questions are given in the brackets [ ].

**SECTION A [30 MARKS]**

**ALL QUESTIONS IN THIS SECTION ARE COMPULSORY.**

**QUESTION 1**

A] Fill in the blanks.

[6]

- 1) After a liquid has been poured into a measuring cylinder, a curve can be seen on the surface of the liquid which is called the \_\_\_\_\_.
- 2) A body is said to be in motion when its position changes with respect to the \_\_\_\_\_.
- 3) The \_\_\_\_\_ energy is stored within the bonds of atoms and molecules that make up a substance.
- 4) \_\_\_\_\_ meristems present in monocots along internodes are responsible for their growth in length.
- 5) Cartilage is made of special cells called as \_\_\_\_\_.
- 6) The oil glands of skin secrete a fatty substance which is known as \_\_\_\_\_.

Contd...

B] Match the columns with the most appropriate answer [4]

Column A	Column B
i) Element	a) Ammonium chloride
ii) Alloy	b) Sugar
iii) Sublimate	c) Iron
iv) Compound	d) bronze

**QUESTION 2**

A] Distinguish between the given pairs on the basis of what is given in the brackets. [6]

- 1) Mixtures and Compounds (method of separation of constituents)
- 2) Solids and Gases (Volume)
- 3) Xylem and Phloem (Conducting materials)
- 4) Nuclear energy released due to fusion of atoms and Nuclear energy released due to splitting of atoms (One example)
- 5) Speed and Velocity (Scalar/Vector)
- 6) Mass and Weight (name of measuring instrument)

B] Write the SI unit of the following physical quantities. [4]

- 1) Energy
- 2) Weight
- 3) Velocity
- 4) Volume

**QUESTION 3**

A] i) Draw a neat labelled diagram of unstriated muscles. [1]

ii) What are they also called as? Why? [2]

iii) Write any two locations of unstriated muscles. [1]

B] Give scientific reasons. [6]

- 1) Gases are highly compressible.
- 2) Some chemical symbols of elements have two letters.
- 3) Metabolic wastes need to be removed from the body.
- 4) The epidermis in leaves prevent them from drying.
- 5) The length is a scalar quantity.
- 6) A car moving on a crowded path is an example of non-uniform motion.

Contd.....

**SECTION B (MARKS 30)**

**ALL QUESTIONS IN THIS SECTION ARE COMPULSORY.**

**QUESTION 4**

A] If an elephant and an ant are moving with the same velocity then do they have the same kinetic energies?

If 'Yes' then give the reason and if 'No' then whose kinetic energy is more? Why? [3]

B] Write the symbol of each of the following elements. [3]

i) Nitrogen ii) Zinc iii) Iodine iv) Hydrogen v) Chlorine vi) Helium

C] Write the English names of the elements whose symbols are given below:[4]

i) O ii) Ca iii) P iv) Al

**QUESTION 5**

A] Write the function/ use of each of the following: [5]

- 1) Measuring cylinder
- 2) White blood cells
- 3) Chlorenchyma
- 4) Sphincter muscles
- 5) Liver (excretory role)

B] Name the following: [5]

- 1) The cells of sclerenchyma which provide a gritty texture and crunchiness to the seed coat and pulp of fruits.
- 2) The type of mixture Carbon dioxide in soft drink is.
- 3) The energy used in running Maglev trains.
- 4) The blood cells which initiate the process of blood clotting.
- 5) The hard, mineralized tissues which provide a framework to support our body.

Contd.....

**QUESTION 6**

A] Identify and name the tissues shown in the figures given below. Also write whether they belong to plant tissues or animal tissues. [3]

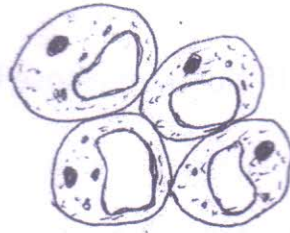


Figure i



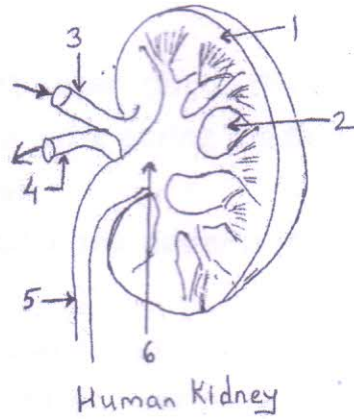
Figure ii

B] Name the most suitable technique which can be used to separate the following mixtures: [3]

- 1) Crude oil into petrol, diesel and kerosene.
- 2) Kerosene oil and water
- 3) Squeezing out water from wet clothes in washing machines.

Contd.....

C] Observe the figure given below and answer the questions that follow: [4]



- i) Label the parts 2 and 6
- ii) Write the function of part 3
- iii) Name the part to which, the part 5 in the figure transports the urine.
- iv) Write one function of kidney other than urination.

**BEST OF LUCK**