

GREENLAWNS HIGH SCHOOL

SUB. : BIOLOGY EXAMINATION

STD : 8ABC

MARKS : 60

TIME : 1.5HOURS

Answers to the questions must be written on the paper provided separately. You will not be allowed to write for the first 10 minutes. This time is to be spent in reading the question paper. All questions are compulsory

QUESTION 1

- A) Name the following (5)
- i) Membrane around the heart
 - ii) Neuter flower
 - iii) outer layer of pollen grains
 - iv) organisms that feed on dead plant and animal
 - v) Disease causing germ

- B) Fill in the blanks. Write only answer (5)

i) ____1____ is the process through which plants lose water in the form of water vapour

ii) White blood cells are also known as _ 2_____

iii) Malaria is caused due to a protozoan ____3____ that is transmitted through the bite of a mosquito--- ____4____

iv) _____5_ and _____6_____ are macro nutrients required by plants

- C) Match the column (5)

- | | |
|---------------|----------------------------|
| i) bacteria | (a) budding |
| ii) spirogyra | (b) vegetative propogation |
| iii) hydra | (c) binary fission |
| iv) moss | (d) spore formation |
| v) propagules | (e) fragmentation |

D) Identify whether the following statements are true or false. If false rewrite the correct statement changing only the first or last word (5)

i) Cell wall is semi permeable

ii) Osmosis is the movement of substances from higher concentration to lower concentration

iii) Carpel is made of anther and filament

iv) Pulmonary artery carries oxygenated blood

v) Louis Pasteur conceived the idea of vaccination

E) Give one difference between the following pairs (5)

i) Entomophilous and Anemophilous (agent)

ii) Guttation and transpiration(structure through which the process takes place)

iii) Xylem and Phloem (function)

iv) Blood and Lymph (composition)

v)Heart attack and Cardiac arrest (cause)

F) Choose the odd one out. Give a reason for your answer(5)

i) influenza, aids, tuberculosis, measles

ii)vena cava ,capillaries, aorta, pulmonary vein ,pulmonary artery

ii) marigold, dahlia, hibiscus, vallisneria

iv) water, soil ,grass, sunlight, temperature

v) carries oxygenated blood, has valves, blood flows under high pressure, are deep seated

SECTION B
SOLVE ALL

QUESTION 2

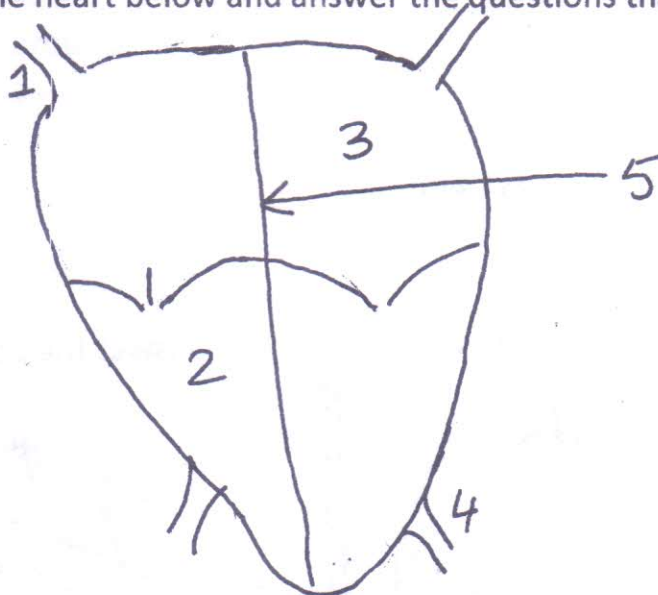
A) Define the following terms

(5)

- i) Root pressure
- ii) closed vascular system
- iii) communicable disease
- iv) Active Transport
- v) ecosystem

B) Study the diagram of the heart below and answer the questions that follow

(5)



i) Label parts 1,2,3,4

ii) Give function of part 5

iii) Why is circulation of blood in humans known as double circulation?

iv) Give the function of SAN

QUESTION 3

A) Describe the 4 types of vaccines, give one example of each

(5)

What is the importance of vaccines?

B) Give a reason for the following

(5)

i) Blood group must be matched before blood transfusion

ii) Fertilization in plants is known as double fertilization

iii) Why would you apply baking soda at the site of a bee sting ?

iv) Transpiration is useful to plants 2 points

v) Excess alcohol is harmful to health

QUESTION 4

A) Give the function of the following

(5)

i) tricuspid valve

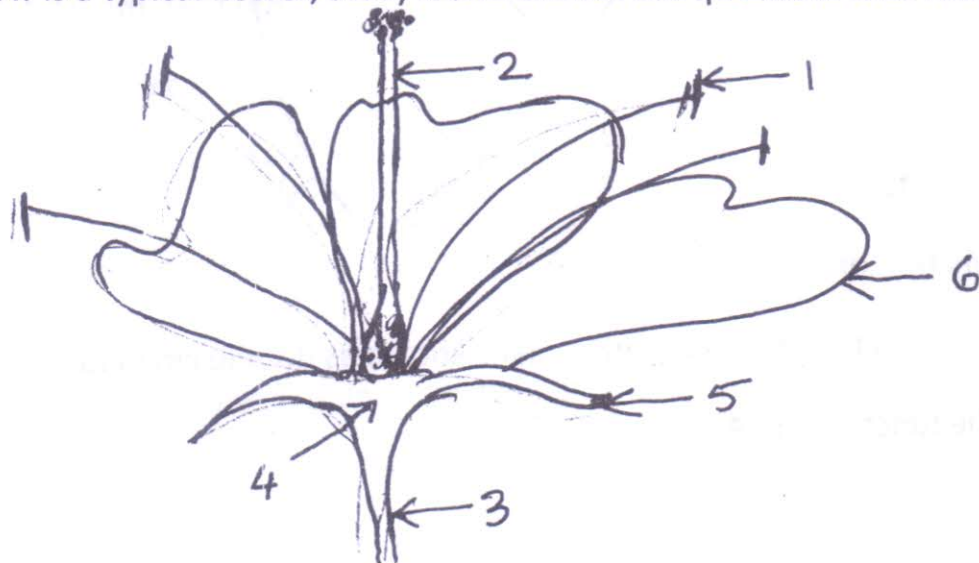
ii) root hair

iii) Calyx

iv) decomposers in an ecosystem

v) Tissue fluid

B) Drawn below is a typical flower, study it and answer the questions that follow (5)



i) Identify parts 1,2,3,4

ii) Give the function of parts 5 and 6

iii) Is the flower unisexual or bisexual? Give a reason for your answer