

GREENLAWNS HIGH SCHOOL  
TERMINAL EXAMINATION 2022-2023

SUB.: BIOLOGY EXAMINATION  
STD 9 C

MARKS : 60  
TIME : 1.5 HOURS

-----  
You will not be allowed to write for the first 10 minutes .This time is to be spent in reading the question paper.

Write your answers separately on the paper provided

Section 1 is compulsory. Solve all questions

Section 2 has 4 questions .Solve any 3

SECTION A

QUESTION 1

(8)

Select the correct answers to the questions from the given option. Write the correct option only

(a) Leucoplasts store

(i) Proteins (ii)starch (iii)glucose (iv)fats

(b)BCG vaccine provides immunity against

(i) Tetanus (ii) Cholera (iii) Tuberculosis (iv) AIDS

( c ) Salk's vaccine is used to build immunity against

(i)Tuberculosis (ii) Poliomyelitis (iii) Malaria(iv) diphtheria

(d) The longest cells in the human body are

(i) nerve cells (ii) bone cells (iii) muscle cells (iv) cardiac muscles

(e) Is not a disinfectant

(i) phenol (ii) Cresol (iii) Iodine (iv) DDT

(f) Is not an antibiotic

(i) Streptomycin (ii) Penicillin (iii) Sulphadiazine (iv) Aureomycin

(g) Is not an endospermic seed

(i) Poppy Seed (ii) Custard apple (iii) Palm (iv) mango

(h) Is a dioecious plant

(i) maize (ii) palm (iii) cucumber (iv) pumpkin

## QUESTION 2

(a) Name the following (5)

- (i) largest opening in the skeletal system
- (ii) protein in skin
- (iii) end product of anaerobic respiration in plants
- (iv) scientific term for collar bone
- (v) full form of BCG

(b) Arrange and write in the logical sequence (4)

- i) Coccygeal, cervical, lumbar, thoracic, sacral
- ii) Assimilation, egestion, ingestion, absorption, digestion
- iii) Oesophagus, mouth, duodenum, rectum, anus
- iv) Pollen grain, style, ovule, ovary, stigma

(c) Match the column. Write only the alphabet (5)

### Column A

- (i) hinge joint
- (ii) ball and socket joint
- (iii) synovial joint
- (iv) gliding joint
- (v) pivot joint

### Column B

- a) shoulder
- b) skull and vertebra
- c) wrist
- d) elbow
- e) knee

(d) Choose the odd one out and name the category others belong to (4)

- i) Calyx, androecium, thalamus, corolla, gynoecium
- ii) Duodenum, jejunum, caecum, ileum
- iii) blood, lymph, tendon, bone, skin
- iv) saliva, hydrochloric acid, urine, tears, gastric juice

(e) State the exact location (4)

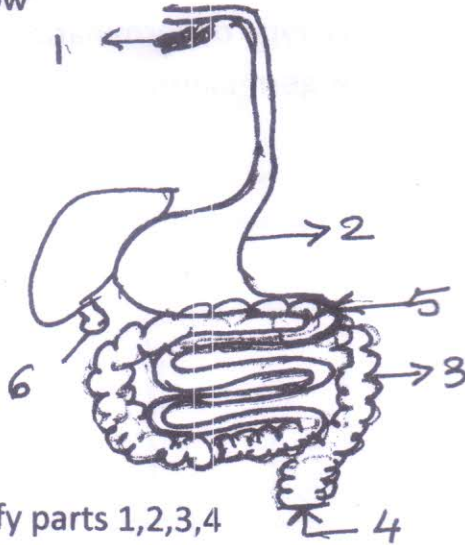
- (i) epiglottis
- (ii) chlorophyll
- (iii) villus
- (v) parotid gland

**SECTION B (30MARKS)**  
**SOLVE ANY 3 OUT OF THE GIVEN 4 QUESTIONS**

**QUESTION 3**

(5)

(a) Drawn below is a part of the digestive system .Study it and answer the questions that follow



- (i) Identify parts 1,2,3,4
- (ii) Give the function of parts 5 and 6
- (iii) Define peristalsis
- (iv) What is the importance of digestion?

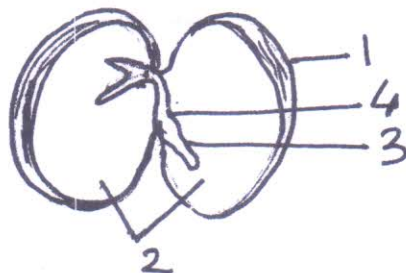
(b) Give reason for the following statement

(5)

- (i) The small intestine is long and narrow
- (ii) The flower of palm tree carries out cross pollination
- (iii) Salvarson was banned
- (iv) Vertebral column is curved
- v) Plant cell has a rigid shape

**QUESTION 4**

(a) Study the diagram drawn below and answer the following questions [5]



- i) Label parts 1,2,3,4
- ii) What type of germination does the above seed carry out
- iii) List 2 characteristics of the above type of germination
- iv) What do you mean by viviparous germination

(b) Give the importance of the following (5)

- (i) Ligament
- (ii) Pyloric sphincter
- (iii) Liver
- (iv) Synovial fluid
- (v) vaccination

### QUESTION 5

(a) With respect to the skeletal system answer the questions that follow (5)

- (i) Name the membrane around the bone
- (ii) scientific term for breast bone
- (iii) What is the importance of a joint
- (iv) Name the parts corresponding to the following in the hind limb
  - A-→Humerus
  - B-→Carpels
  - C-→phalanges
  - D-→Radius

v) Name 2 minerals present in bones

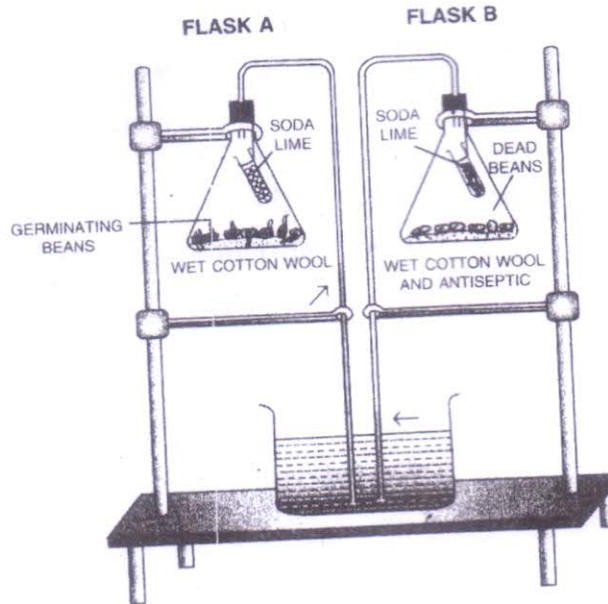
(b) Give 1 difference between the following pairs as specified in the bracket (5)

- (i) Active and passive immunity (definition)
- (ii) Acetabulum and Glenoid cavity (girdle it is present in)
- (iii) penicillin and streptomycin (site of action)
- (iv) marasmus and kwashiorkor (cause)
- (v) Respiration and photosynthesis (end products)

QUESTION 6

(5)

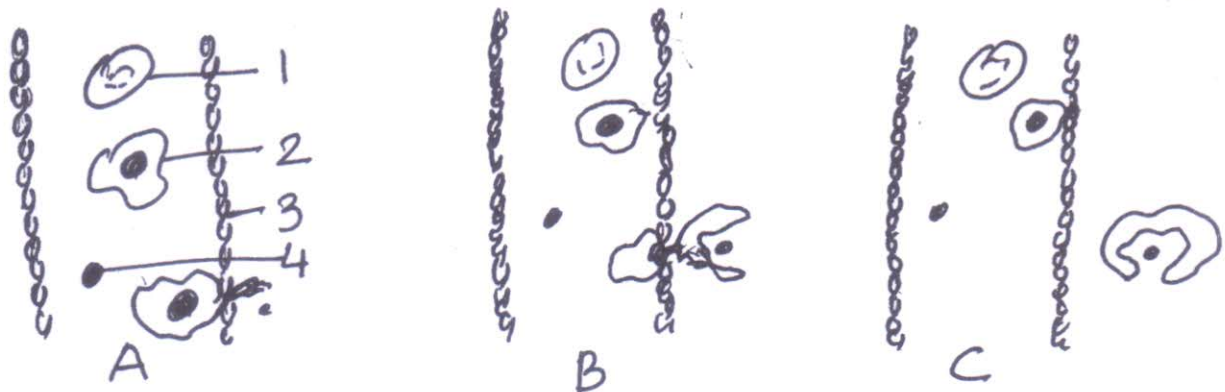
(a) Study the set up drawn below and answer the questions that follow



- (i) What is the aim of the experiment
- (ii) What is the use of soda lime?
- (iii) Define the process
- (v) Give the full form of ATP
- (vi) Give the difference between aerobic and anaerobic respiration (on basis of end products in plants)

(b) Drawn below is a representation of a process. Study it and answer the questions below

(5)



- a) Label 1,2,3,4
- b) Define the process depicted in A
- c) What is the importance of Band C
- d) List 2 characteristics of antibodies