

Std: 5

Greenlawns High School

Date: 17.02.2022

Second Semester Examination-Science

Marks: 40

**Please note:** 1. Write answers to all the questions on composition sheets.

2. On each side of the composition sheet mention your name, roll no., std., and div.

3. Take clear picture of answer sheets and submit it as pdf.

4. Rename your pdf as your 'Roll no name subject Sem.2'

**(Example: 23 Akash Jain science Sem.2)**

**Q.1) Fill in the blanks :-**

**[5]**

- (a) \_\_\_\_\_ is present at the tip of the stamen.
- (b) Zygote after many divisions develop into \_\_\_\_\_.
- (c) Loud and unpleasant sound is called \_\_\_\_\_.
- (d) When object \_\_\_\_\_ sound energy is produced.
- (e) A \_\_\_\_\_ is a rigid bar resting on a pivot.

**Q.2) Name the following :-**

**[5]**

- (a) Modified inclined plane that have groove at its head.
- (b) Capacity to do work.
- (c) Young plant with tiny leaves.
- (d) Flowers that bear either male and female reproductive parts.
- (e) Special structures for reproduction in ferns.

**Q.3) Give two examples of: -**

**[5]**

- (a) Wheel and axle.
- (b) Non-renewable energy sources.
- (c) Warning sounds.
- (d) Plants that can grow/reproduce from roots.
- (e) Bisexual flowers.

**Q.4) Write True or False and correct the false statements :-**

**[5]**

- (a) Style is the sticky, swollen part of the pistils.
- (b) A new plant of onion develops from the bulb.
- (c) The energy obtained from rays of the sun is called light energy.
- (d) A pulley is a complex machine used to lift heavy objects.
- (e) Heavy carpet and curtains help to reduce noise pollution.

**Q.5) Distinguish between (definitions only) :-**

**[3]**

- (a) renewable energy sources and non-renewable energy sources.
- (b) Pleasant sound and Unpleasant sound.
- (c) Androecium and Gynoecium.

**Q.6) Give one function of the following :-**

**[3]**

- (a) Seed coat
- (b) Sepals
- (c) machine

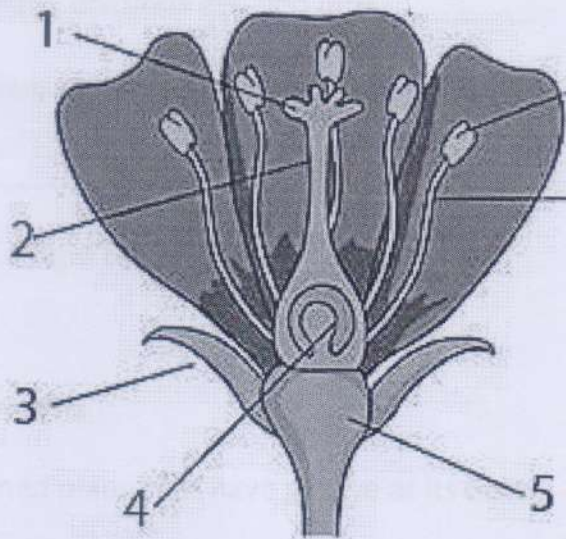
Q.7) Find the odd man out giving reasons :-

[5]

- (a) calyx, corolla, androecium, cotyledon.
- (b) honking, chirping of birds, explosion, loud music.
- (c) wind mills, solar panels, coal, hydro power.
- (d) seesaw, wheelbarrow, nutcracker, human foot
- (e) ginger, onion, maple, turnip

Q.8) Label the figure given below :-

[5]



Q.9) Answer the following questions :-

[4]

- (a) What is the need for seed dispersal?
- (b) List two harmful effect of noise pollution.
- (c) Define wedge.
- (d) When do we say that work is done?

-----THE END-----