

INSTRUCTIONS: All the answers should be written on the answer script provided to you. Detach the maps from the question paper and tie them to your answer script. First 10 minutes are allotted for reading the question paper only.

- I. Maps (25)
- A. On **Map no. 1** mark, label and shade the following:
- I. Countries (4)**
- a. Canada
 - b. Belize
 - c. Nicaragua
 - d. El Salvador
- II. Oceans and lakes (5)**
- a. Atlantic Ocean
 - b. Lake Michigan
 - c. Lake Athabasca
 - d. Lake Winnipeg
 - e. Lake Huron
- III. Islands (3)**
- a. Cuba
 - b. Haiti
 - c. Vancouver
- IV. Gulf (1)**
- a. Gulf of Mexico
- V. Bay (1)**
- a. Hudson Bay
- B. On **Map No. 2** mark, label and shade the following: (4)
- I. The Canadian Shield**
- II. Rivers**
- a. River Missouri
 - b. River Athabasca
- III. Highlands/ Mountains/ Range**
- a. Alaska Range
 - b. Rocky Mountains

- C. On Map No. 3 mark, label and shade the following: (4)
- Coniferous Region
 - Hot Desert Region
 - Mediterranean Region
 - Deciduous Region

- D. On Map No. 4 mark, label and shade the following: (3)
- Any 1 region having 100-200cm rainfall
 - Warm Gulf Stream Current
 - Cold Labrador Current

- II. Fill in the blanks: (Do not copy the statement) (5)
- The _____ are the Indian tribe living in United States.
 - _____ lies between the Great Basin Desert and Sonoran Desert.
 - Amerigo Vespucci was an Italian _____ explorer and navigator.
 - The _____ or the Arctic type of climate prevails in the northernmost part of North America.
 - _____ is the first city that is taken under the protection of UNESCO, since 1985.

- III. Choose the correct answers to the questions from the given options. (Do not copy the questions, write the correct answers only) (5)
- The longest suspension bridge in the world.
 - San Francisco Bay Area
 - the Golden Gate Bridge
 - Chicago
 - New York
 - The greatest Canadian port.
 - Montreal
 - St. Lawrence
 - Ottawa
 - Toronto
 - The crop that is grown throughout the Mississippi basin.
 - Wheat
 - Tobacco
 - Coffee
 - Maize

d. The river that originates from the Rocky Mountains and it flows into the Strait of Georgia.

1. Fraser river
2. Mississippi river
3. Michigan river
4. Ganga river

e. The largest island in the world.

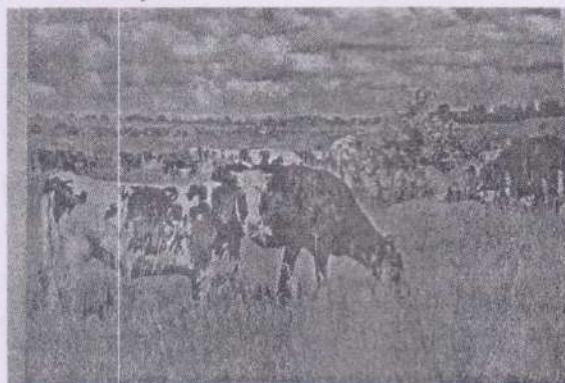
1. Vancouver
2. Cuba
3. Andaman and Nicobar
4. Greenland

IV. Match the following: (One example is solved for you) (6)

EG: 7-h

A	B
1. United States of America	a. World's richest cod fishing ground
2. Winter wheat	b. Metropolis city
3. The Grand Bank of Newfoundland	c. Colorado Plateau
4. Chicago	d. Third largest country
5. Toronto	e. Prairies
6. Desert Vegetation	f. Harvested in July
7. India	g. North-eastern Illinois
	h. Delhi

VI. Picture Study: (6)



- a. Identify the picture. (1)
- b. Why milk produced by cattle is converted into cheese, butter and milk powder? (1)

- c. Which other animals are reared (apart from the animal in the picture) on the temperate grassland and mountain pastures of North America? (Any 2) (2)
- d. Name the places that are best suited for livestock ranching? (2)

VII. Differentiate between the following: (8)

- a. High-riggers and Haulers (based on what work they do)
- b. Winter wheat and Spring wheat (when seeds are sown)
- c. Taiga region and Desert region (animals found) (any 2 each)
- d. Tropical type of Climate and Cool Temperate type of Climate (rainfall)

VIII. Give reasons: (6)

- a. Fishing is an important commercial activity. (1)
- b. The size of the continent affects the climate of the region. (2)
- c. Desert vegetation consists of plants which need very little moisture. (1)
- d. Direction of mountain ranges affects the climate of North America. (2)

IX. Answer the following: (19)

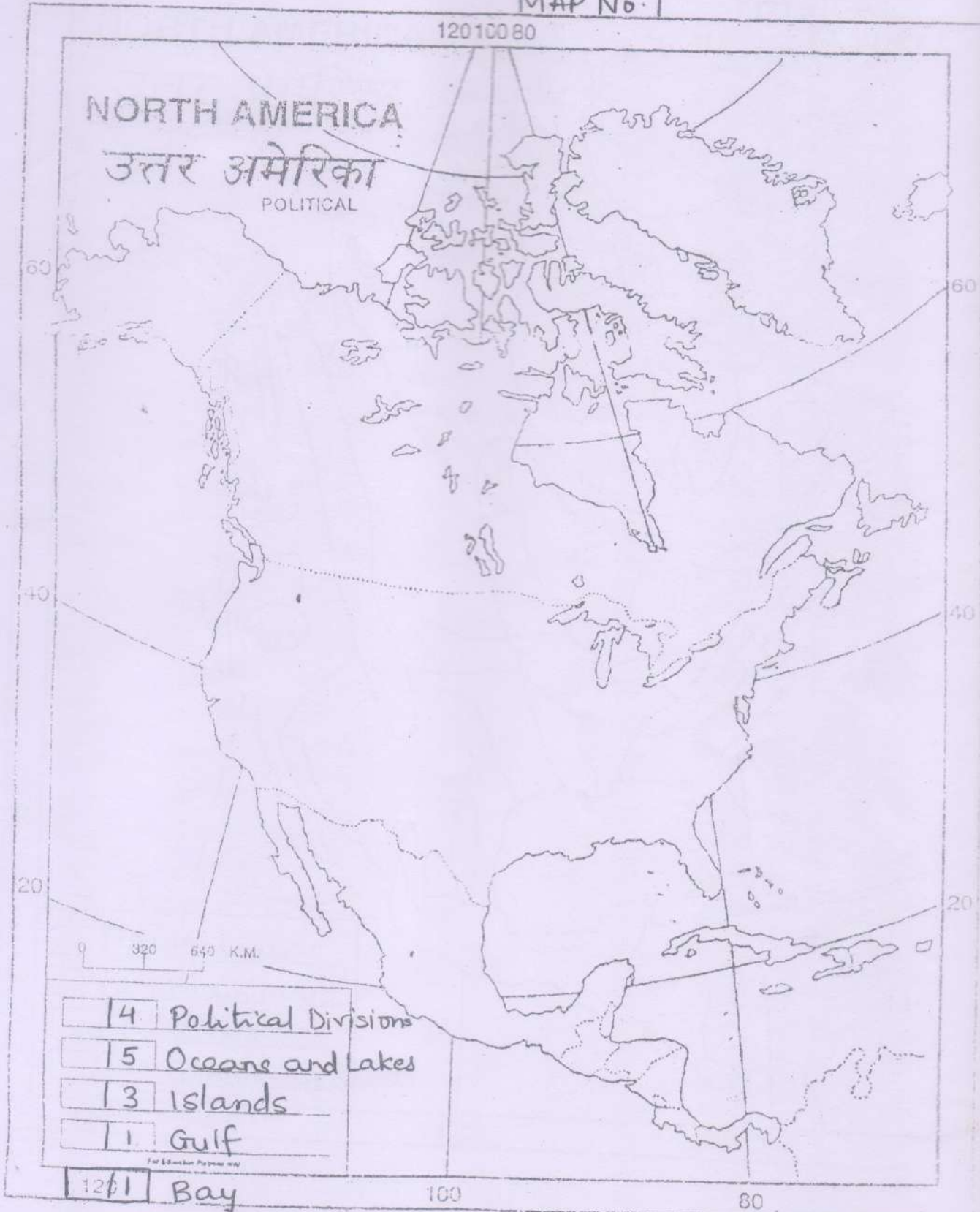
- a. Explain in detail how the prevailing winds affect the climate of North America. (3)
- b. State any 6 kinds of natural vegetation found in North America. (3)
- c. What did the camp consist of? (3)
- d. With respect to the tobacco plant, answer the following questions:
 - 1. Describe tobacco plant. (1)
 - 2. Where is it grown in North America? (1)
 - 3. Mention its leading producers. (1)
 - 4. Name the state which produces a superior quality of tobacco. (1)
- e. The continent of North America has a phenomenal supply of natural resources. Explain. (1)
- f. With respect to Lumberjacks, answer the following questions:
 - 1. List the 4 groups of Lumberjacks. (2)
 - 2. What difficulty is faced by the 1st group? (1)
 - 3. Mention the responsibilities of the 3rd group. (2)

Name :-

Std/Div :-

R.N :-

MAP No. 1

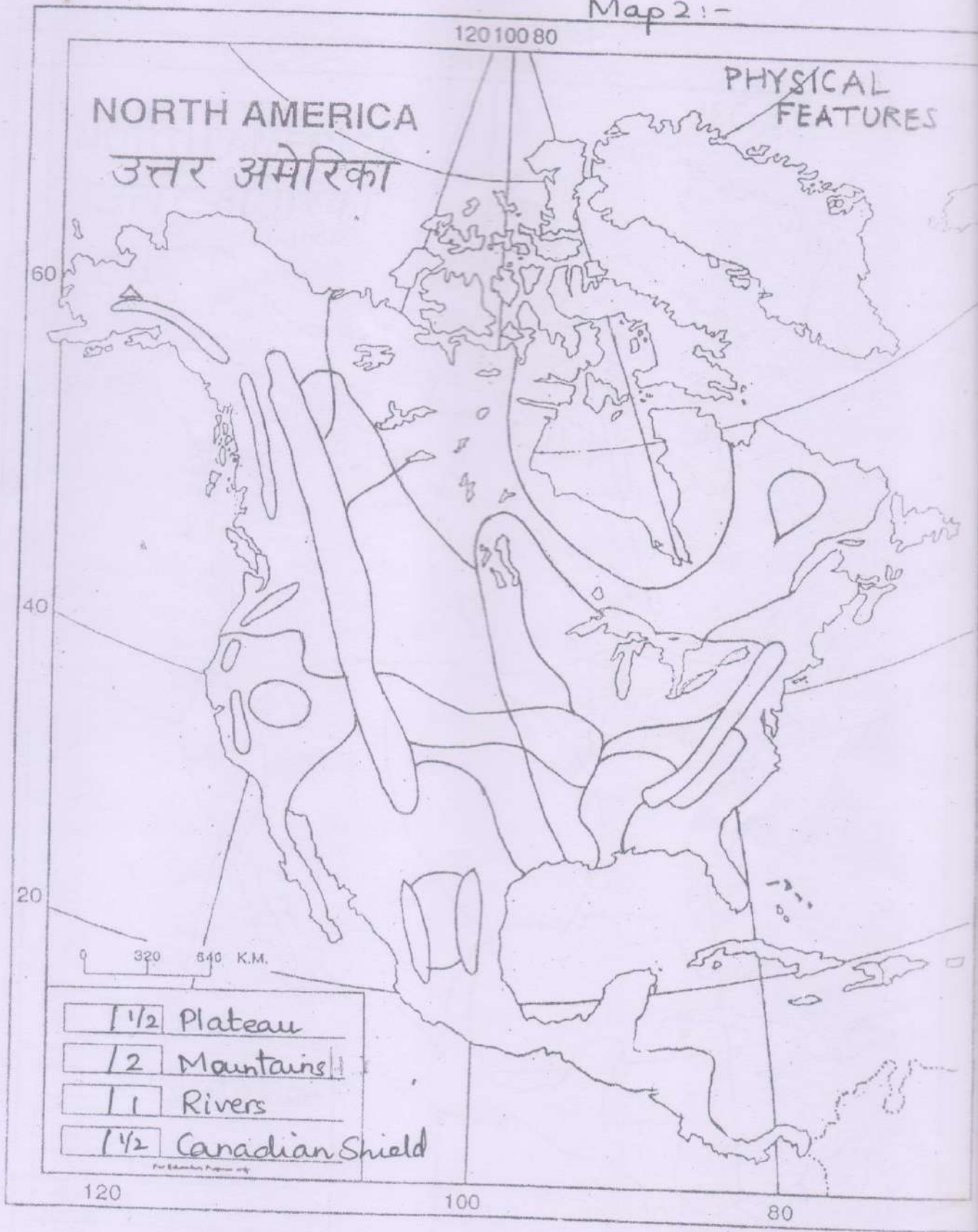


Name:-

Std/Div:-

R.N:-

Map 2:-

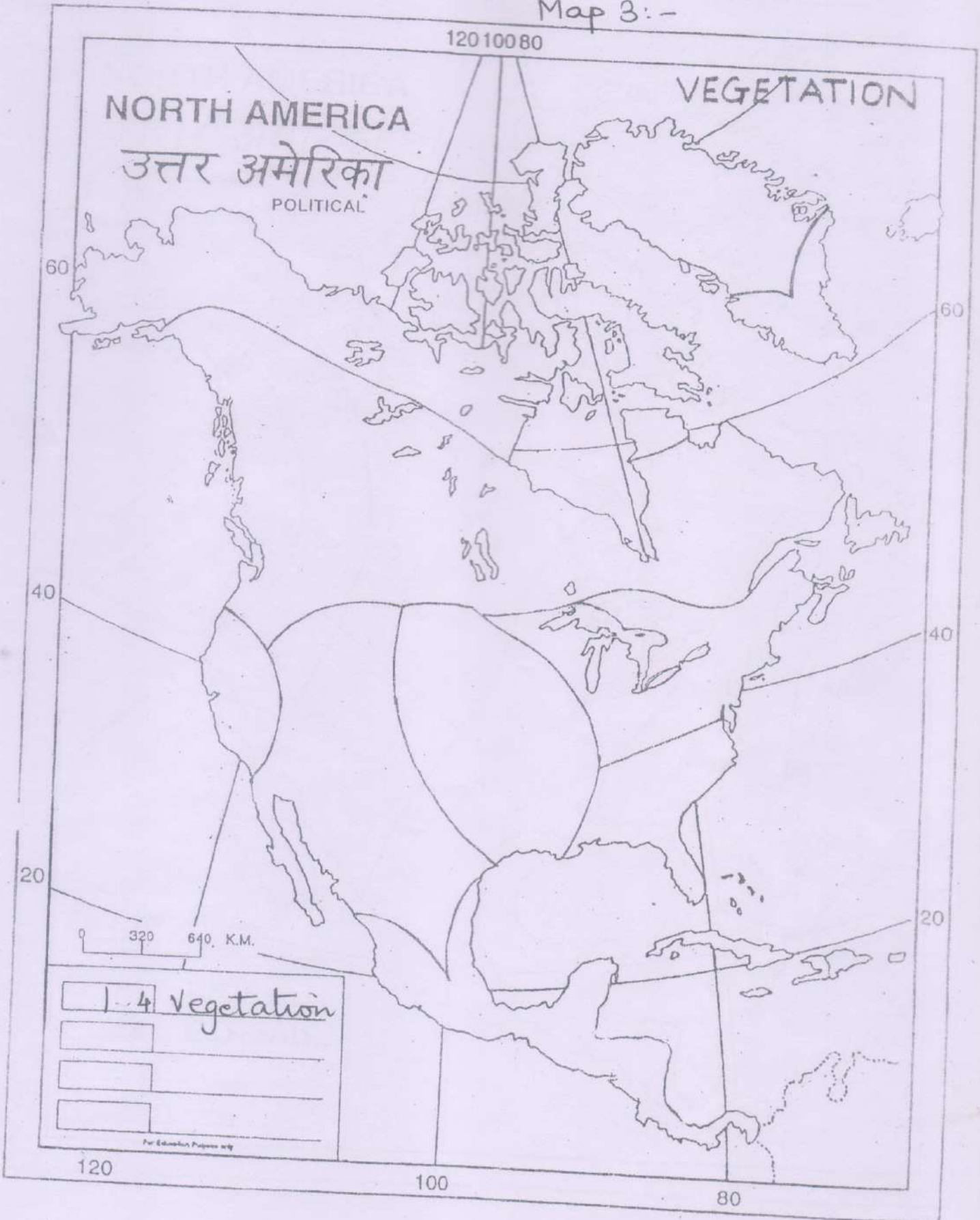


Name:-

Std / Div:-

R.N:-

Map 3:-



Name :-

Std / Div :-

R.N. -

Map 4 :-

