

GREENLAWNS HIGH SCHOOL
TERMINAL EXAMINATION 2023
SCIENCE PAPER

MARKS : 80

TIME : 2 HOURS

STD : 6 A,B,C

NOTE : ALL THE ANSWERS TO WRITTEN IN THE ANSWER BOOKLET.

I. FILL IN THE BLANKS : (8 MARKS)

- a) _____ is required by plants for protein synthesis.
- i. Oxygen
 - ii. Carbon dioxide
 - iii. Nitrogen
 - iv. Sulphur
- b) _____ is the distance from one end to the other of a body or material.
- i. Mass
 - ii. Length
 - iii. Volume
 - iv. Speed
- c) A _____ day has 24 hours
- i. Parallax
 - ii. Metric
 - iii. Mean Solar
 - iv. Full moon

d) If automobile tyres are treaded, the friction _____

- i. Decreases
- ii. Increases
- iii. Remains same
- iv. None of these

e) _____ turns lime water milky.

- i. Oxygen
- ii. Carbon dioxide
- iii. Nitrogen
- iv. Sulphur

f) _____ is a tube which conducts food from mouth to stomach.

- i. Buccal cavity
- ii. Oesophagus
- iii. Large Intestine
- iv. Anus

g) The _____ plant reproduces through its leaves.

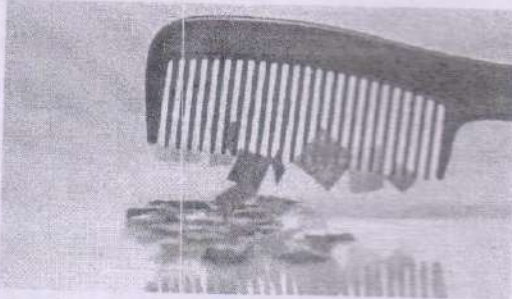
- i. Rhizome
- ii. Asparagus
- iii. Garlic
- iv. Bryophyllum

h) The _____ system controls the functions of different organs in our body.

- i. Skeletal
- ii. Muscular
- iii. Nervous
- iv. Circulatory

II. Name the type of Force :

(3 MARKS)



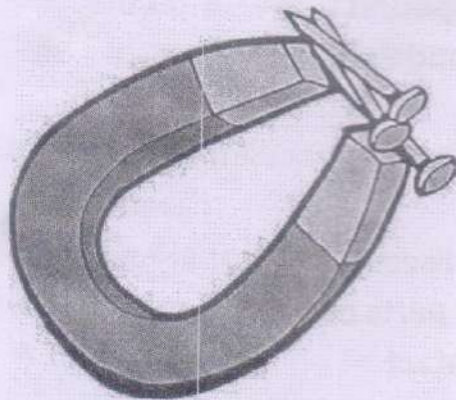
a)

A plastic comb attracting small pieces of paper



b)

A man pulling a cart



c)

A magnet attracting iron nails

III. Match the following :

(5 MARKS)

- | | |
|-------------|--------------------------|
| a) Bamboo | i) Modified Root |
| b) Sun dial | ii) Faeces |
| c) Rectum | iii) Reticulate Venation |
| d) Radish | iv) Face of Sun |
| e) Peepal | v) Parallel Venation |

IV. Give Reasons :

(3 MARKS)

- Amount of oxygen in air does not decrease even though it is continuously used in respiration.
- We need to have standard weights and measures of length.
- When a ball is rolled over a ground of loose soil, the ball comes to a stop easily and quickly.

V. Answer the following questions :

A. Differentiate between (1 point each)
(Write in tabular form) (No examples)

(10 MARKS)

- Room thermometer and Clinical thermometer
- Permanent magnets and Temporary magnets
- Simple Leaf and Compound Leaf
- Reticulate Venation and Parallel Venation
- Calyx and Corolla

B. Name the following :

(6 MARKS)

- Any two respiratory diseases
- The male and female parts of a flower
- Any two forces of contact
- A pair of spongy elastic organs
- Any two monocot seeds
- The technique used in medicine to study brain defects (full form)

C. What is rusting ? What are the property changes that occur in iron when it undergoes rusting ? (3 MARKS)

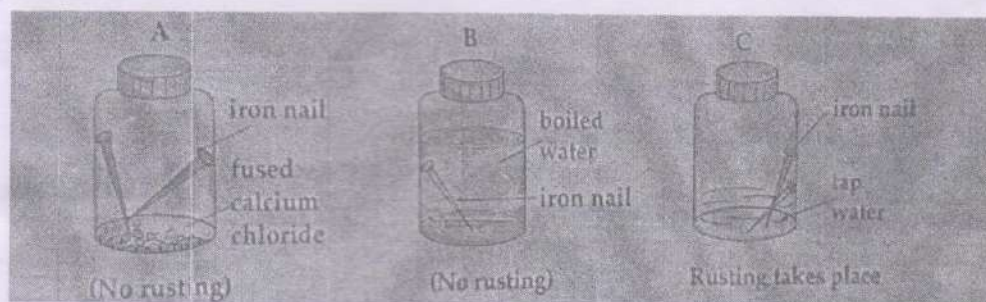
D. What do you mean by pollination ? Name the two types of pollination. (3 MARKS)

E. Explain the three types of fruits. (3 MARKS)

F. Convert the following : (3 MARKS)

- 89 km into metres
- 254 m to centimetres
- 75 cm into millimetres

G.



- In Jar A, why oxygen alone is available ?
- In Jar B, why no rusting takes place ?
- In Jar C, why rusting takes place ? (3 MARKS)

H. Classify the following as magnetic or non-magnetic substances : (3 MARKS)

- Shaving Blade
- Wooden chair
- A tin can

- I. Explain the process of photosynthesis. (2 MARKS)
- J. How does parallax error occur ? How to avoid it?(2 MARKS)
- K. State four effects of force on a body. (2 MARKS)
- L. State two functions of the roots. (2 MARKS)
- M. What is a matured ovule and matured ovary called ? (2 MARKS)
- N. State any 2 causes of indigestion (2 MARKS)
- O. How do you calculate the resultant of two forces acting on the body in opposite directions (2 MARKS)

VI. Questions based on the diagram :

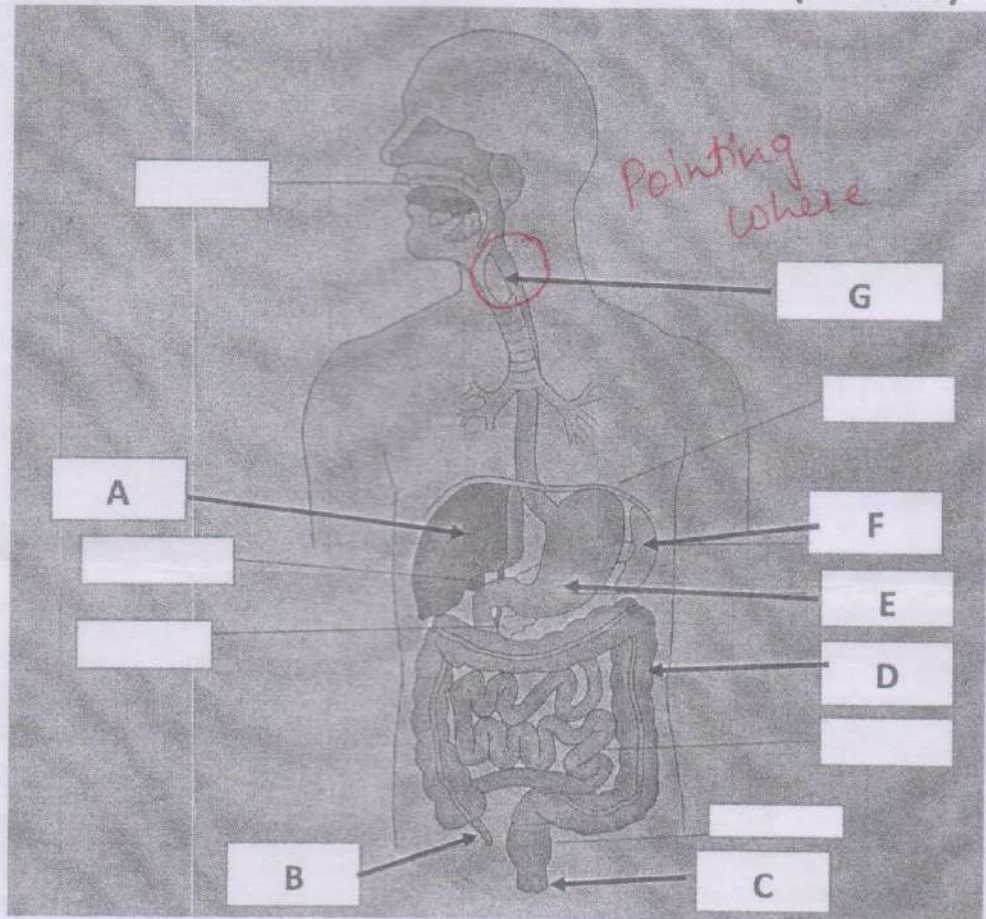
A.

i. Name the organ system

(1 MARK)

ii. Name A,B,C,D,E,F,G

(7 MARKS)



B. Name the parts of the plant A,B,C,D,E

(5 MARKS)

