

**GREENLAWNS HIGH SCHOOL
BIOLOGY EXAMINATION**

**STD : 9
TIME : 2 HOURS**

MARKS : 80

You will not to be allowed to write during the first 10 minutes. This time is to be spent in reading the question paper. This paper has 2 sections
Section A is compulsory section. Solve all questions
Section B has 6 questions. Solve any 4

SECTION A

QUESTION 1

- A) Name the following (10)
- i) Scientific term for bone cells
 - ii) A flap on the trachea
 - iii) Products formed after anaerobic respiration in plants
 - iv) Scientific term for seed coat
 - v) Chemicals found in blood which act against germs
 - vi) Protozoa responsible for causing malaria
 - vii) Prevents the trachea from collapse
 - viii) Muscle that brings about straightening of lower arm
 - ix) Pigment responsible for colour of bile
 - x) An insoluble carbohydrate in plants

- B) Match the following (5)

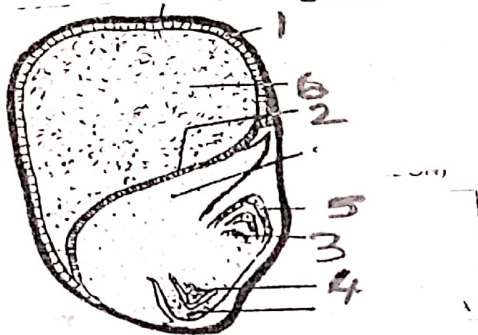
COLUMN

- Collar bone
- Shoulder bone
- Bones of fingers
- Largest bone
- Shoulder girdle

COLUMN

- pelvic girdle
- pectoral girdle
- phalanges
- tarsals
- clavicle
- scapula

- C) Drawn below is the internal structure of the maize grain. (6)



- i) Label parts 1,2,3,4
- ii) Give functions of parts 5 and 6
- iii) List 2 differences between the maize grain and bean seed

D) Choose the odd one and give a reason for your choice

(14)

- i) Pulmonary artery, heart, alveolus, pulmonary vein
- ii) intestine, mouth, anus, liver, stomach
- iii) hair, skin, blood, saliva, tears
- iv) cotyledons, aluerone layer, testa, hilum

E) Define vaccine

(5)

Identify the type of vaccine in each of the following vaccine

- i) Smallpox
- ii) Rabies
- iii) Tetanuous
- iv) Typhoid

F) Give the function of the following

(5)

- i) Joint
- ii) Sebaceous gland
- iii) Intercostal muscle
- iv) Villus
- v) Water in our diet

G) Give a reason for the following

(5)

- i) Maize known as a grain
- ii) Boiled rice taste sweets
- iii) Trachea has C sheet cartilage
- iv) Respiration is an important process
- v) We get pain after excessive exercise

SECTION - B

(Solve any 4)

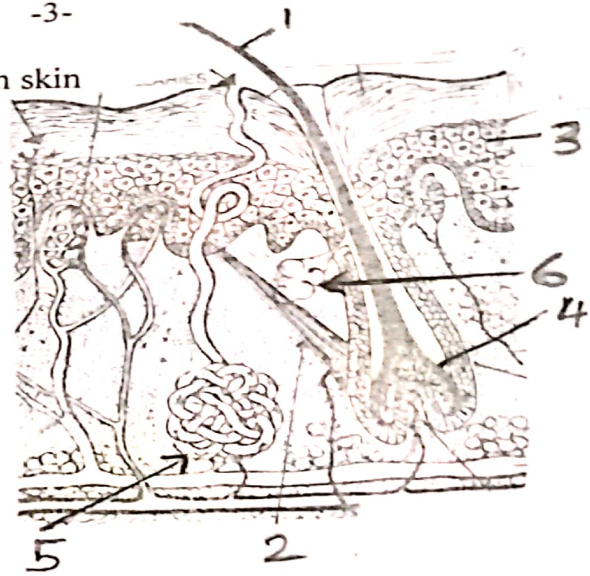
QUESTION 2

A. Name the organism responsible for the following disease

(5)

- i) Tuberculosis
- ii) Cholera
- iii) Pneumonia
- iv) Amoebic dysentery
- v) Filariasis

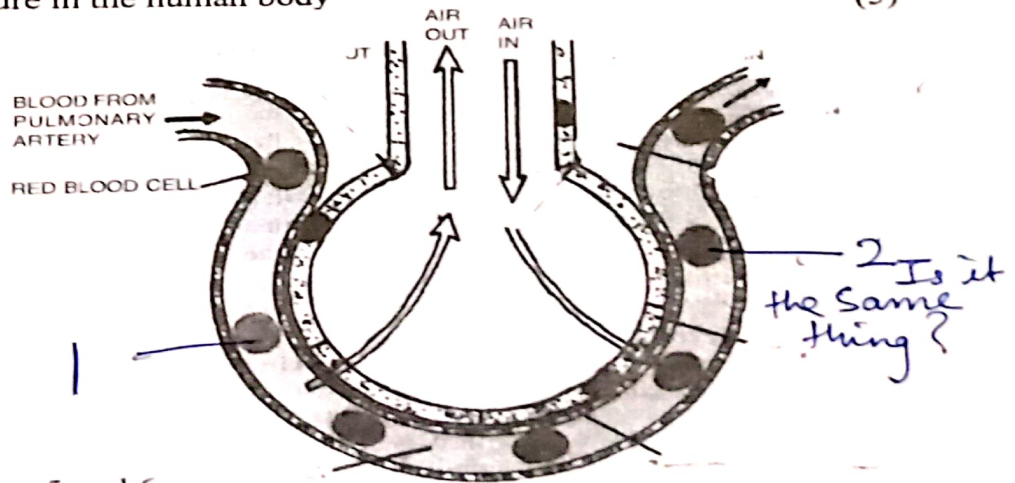
B. Drawn below is a section of the human skin



- i) Identify parts 1,2,3,4
- ii) Give functions of parts 5 and 6
- iii) Give the difference between leucoderma and albinism
- iv) Why do we urinate more often in winter?

QUESTION 3

A Drawn below is a structure in the human body



- i) Identify the structure
- ii) Label parts 1,2,3,4
- iii) Give the function of parts 5 and 6
- iv) What is the importance of the structure being single layered

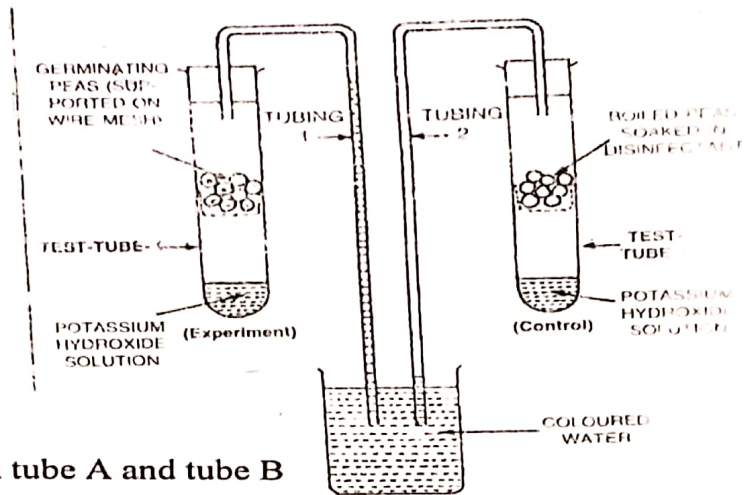
B) Define

- i) Peristalsis
- ii) Deamination
- iii) Digestion
- iv) Hygiene
- v) Endothermal

QUESTION 4

(5)

A) Drawn below is a set up depicting a particular process (5)



- i) What would you observe after sometime in tube A and tube B
- ii) Give a reason for your answer
- iii) What is the role of the disinfectant in flask B ?
- iv) Define the process depicted in the experiment
- v) What is a roll of KOH in flask A.
- vi) Give an equation for the above process.

B) Give the exact location of

(5)

- i) larynx
- ii) hair follicle
- iii) Parotid glands
- iv) Pyloric sphincter
- v) Gliding joints

QUESTION 5

A) Give the full form of

(5)

- i) BCG
- ii) ATP
- iii) AIDS
- iv) DPT
- v) NICD

B) Give 1 difference between

(5)

- i) Disinfectant and Antiseptic.
- ii) Penicillin and Streptomycin (mode of action)
- iii) Active and Passive immunity (source)
- iv) Maize and Bean seed (Type of germination)
- v) Krebs cycle and Glycolysis (end products)

QUESTION 6

(5)

A) Give the equation for the action of the following enzymes
e.g. substrate-----→ end product

- i) Trypsin
- ii) Sucrase
- iii) Amylopsin
- iv) Rennin
- v) Lipase

B) Name the disease caused due to deficiency of the following

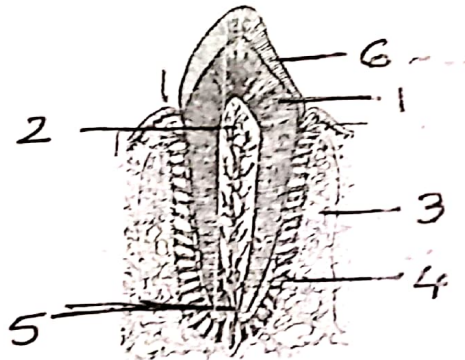
(5)

- i) Iron
- ii) Ascorbic acid
- iii) Thiamine
- iv) Iodine
- v) Niacin

QUESTION 7

A) Drawn below is a diagram of the tooth

(5)



- i) Identify the type of tooth
- ii) Label parts 1,2,3,4
- iii) What is the function of 5 and 6
- iv) What is the dental formula in adults

(5)

B) Identify the type of joint in

- i) knee
- ii) shoulder
- iii) wrist
- iv) neck
- v) elbow