

GREENLAWNS SCHOOL, WORLI
FINAL EXAMINATION - 2024
SCIENCE

Std: V
Date: 15/02/2024

Marks: 80
Time: 2 hours

Attempt all questions. Diagrams to be drawn with a pencil.
Figures to the right indicate the marks []

Q I) Choose one correct answer to the questions from the given options: [10]

a. The largest artery in our body is:

- (i) Superior vena cava (ii) Carotid artery (iii) Aorta (iv) Inferior vena cava

b. Animals such as bears that feed on both plants and animals belong to this category:

- (i) Herbivores (ii) Omnivores (iii) Carnivores (iv) All of these

c. The fixed point around which the rigid bar of the lever moves is called:

- (i) Fulcrum (ii) Axle (iii) Load (iv) Effort

d. The energy present in moving air is:

- (i) Sound energy (ii) Heat energy (iii) Solar energy (iv) Wind energy

e. Stamens of a flower are collectively known as:

- (i) Gynoecium (ii) Androecium (iii) Pistils (iv) Carpels

f. Veins get divided into smaller _____ to form a network throughout the body.

- (i) Valves (ii) Arterioles (iii) Venules (iv) None

g. Unclean hair causes itching of the scalp and infections such as:

- (i) Redness (ii) Stomach-ache (iii) Earwax (iv) Dandruff

h. The swollen end of a pedicel is known as:

- (i) Thalamus (ii) Petal (iii) Calyx (iv) Corolla

i. Disease-causing microorganisms are called:

- (i) Decomposers (ii) Germs (iii) Wastes (iv) Hygiene

j. An example of scavenger is:

- (i) Rabbit (ii) Snake (iii) Termite (iv) Crocodile

Q II A) State whether the following statements are true or false. If false, correct the statement: [5]

- a. Work is done while we are sleeping.
b. A fishing rod is an example of Class-two lever.
c. Self-pollination is commonly seen in pea plants.

- d. Microorganisms grow quickly in dirty water, garbage and polluted environment.
- e. Arteries are the thinnest of all the three blood vessels.

Q II B) Fill in the blanks: [5]

- a. A _____ is a modified inclined plane.
- b. Waste materials that do not get decomposed and stay unchanged over time are called _____.
- c. _____ are brightly coloured, scented leaf like structures that attract insects.
- d. The human heart is protected by the _____.
- e. The _____ is the natural source of heat energy on Earth.

Q II C) Define the following terms: [5]

- a. Vaccines
- b. Blood
- c. Wedge
- d. Cross-pollination
- e. Renewable energy sources

Q II D) Choose the odd one out and name the category to which the others belong: [5]

- a. Cow, goat, sheep, fox
- b. Paper, wood, plastic, vegetable peels
- c. Sea saw, tongs, scissors, crowbar
- d. Alarm clock, electric bulb, tube light, candle
- e. Blood vessels, skin, heart, blood

Q II E) Distinguish between the following with reference to what is stated within brackets: [5]

- a. Monosexual and Bisexual flowers (an example)
- b. Red blood cells and White blood cells (function)
- c. Fixed pulley and Movable pulley (type of axle)
- d. Work and Energy (definition)
- e. Green dustbins and Blue dustbins (type of waste collected)

Q II F) Match the following: [5]

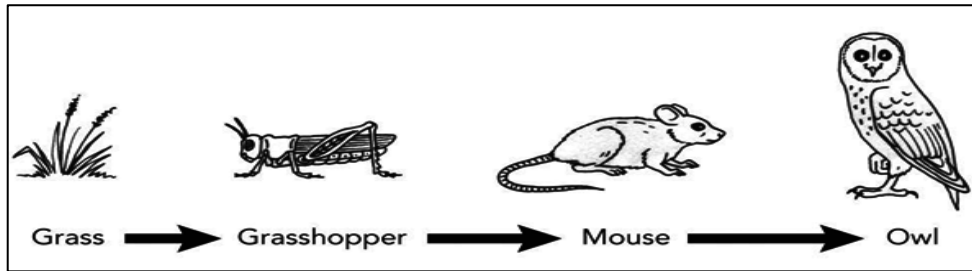
- | | |
|---------------|---------------------------------|
| a. Plants | i. Teeth |
| b. Floss | ii. Drying clothes |
| c. Sunlight | iii. Producers |
| d. Auricles | iv. Lower chambers of the heart |
| e. Ventricles | v. Upper chambers of the heart |

Q III A) With reference to the given diagram, answer the questions that follow:



- a. Identify the simple machine shown in the diagram. [1]
- b. How does it make our work easier? [1]
- c. Give two examples of the same. [2]

Q III B) Observe the figure given below and answer the questions that follow:



- a. What does the above given picture depict? [1]
- b. Categorize these living organisms into two broad categories. [1]
- c. Why does such an interaction exist in nature? [1]
- d. What are scavengers? Why are they important? [2]

Q III C) Identify the types of energy and state one use of each as shown below: [3]



(a)



(b)



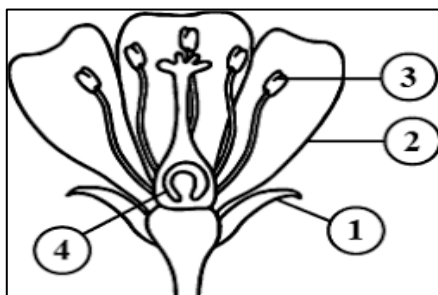
(c)

Q III D) Observe the figure given below and answer the questions that follow:



- a. Name the form of exercises as shown in the picture above. State how are they useful. [2]
- b. List down any two names of such exercises. [1]
- c. How does such exercises help in reducing stress? [1]

Q III E) Look at the diagram of a flower given below and answer the questions that follow:



- a. Label the parts 1 and 2. [2]
- b. Which is the male reproductive part of the flower? [1]
- c. What is the swollen base of the part 4 known as? [1]

Q IV) Answer the following questions:

- a. What are communicable diseases? State any two ways by which they are spread. [2]
- b. State the function of heart. What is its location in the body? [2]
- c. Why should we use sources of non-renewable energy judiciously and carefully?
Give one example of such kind of energy. [2]
- d. Discuss the importance of simple machines. [2]
- e. With the help of an example, explain that the amount of energy needed to do work depends on the type of work that we are doing. [2]

Q V A) Give scientific reasons for the following: (Give two reasons for each) [8]

- a. Decomposers play a very important role in the cycle of nutrients in the environment.
- b. We should always cover our mouth and nose with a clean handkerchief while coughing or sneezing especially when sick.
- c. Human foot is an example of Class-two lever whereas human arm is not.
- d. The decrease in carnivores in a particular area would also decrease the number of herbivores and plants of that area.

Q V B) Draw a neat labelled diagram of the three types of blood vessels present in our body. [2]
