

GREENLAWNS SCHOOL, WORLI
TERMINAL EXAMINATION - 2024
SCIENCE

Std: V
Date:30/09/2024

Marks: 80
Time: 2 hours

Attempt all questions. Diagrams to be drawn with a pencil.
Figures to the right indicate the marks []

Q I) Choose one correct answer to the questions from the given options: [10]

- a. The jelly like substance found inside a bone is known as:
(i) Vertebrae (ii) Valve (iii) Capillary (iv) Bone Marrow
- b. The stamens are collectively called:
(i) Anther (ii) Pollen grains (iii) Androecium (iv) Gynoecium
- c. Musical instruments produce a _____ type of sound:
(i) Pleasant (ii) Unpleasant (iii) Warning (iv) All
- d. The fixed point around which the bar moves is the:
(i) Effort (ii) Fulcrum (iii) Load (iv) None
- e. The tube-like stalk attached to the ovary of a flower is known as:
(i) Stigma (ii) Style (iii) Ovule (iv) Pistil
- f. The burning of fuels such as coal and petroleum produces:
(i) Sound energy (ii) Solar energy (iii) Wind energy (iv) Heat energy
- g. The cells in the blood that stop bleeding are:
(i) White blood cells (ii) Platelets (iii) Plasma (iv) Red blood cells
- h. This type of joint allows bones to slide over each other:
(i) Hinge joint (ii) Pivot joint (iii) Gliding joint (iv) Ball-and-socket joint
- i. Wheelbarrow and nutcracker are examples of:
(i) Wheel and axle (ii) Class one lever
(iii) Class two lever (iv) Class three lever
- j. The blood vessels that bring back blood from the upper body to the heart is:
(i) Superior vena cava (ii) Inferior vena cava
(iii) Aorta (iv) Pulmonary arteries

Q II) State whether the following statements are true or false. If false, correct the statement: [5]

- a. Babies are born with 206 bones.
b. Candles are natural source of light energy.
c. Arteries are the thickest of all blood vessels.
d. Hibiscus plant bears unisexual flowers.
e. Children playing football are doing work.

Q III) Fill in the blanks:

[5]

- a. Any device or tool that simplifies our work is called a _____.
- b. The bones in the _____ are flat and locked together.
- c. The Warning sounds are made by _____ which are loud sound-making devices.
- d. The energy present in flowing _____ is known as hydel energy.
- e. The blood circulates in _____ loops at the same time.

Q. IV) Match the following:

[5]

- | | |
|-----------------|-------------------------------|
| a. Veins | i. Regulates body temperature |
| b. Blood | ii. Show cross pollination |
| c. Tulips | iii. Absorbs sound |
| d. Thick carpet | iv. Corpse flower |
| e. Titan Arum | v. Contain valves |

Q V) Define the following terms:

[6]

- | | |
|----------------|-------------------|
| a. Pollination | d. Heartbeat |
| b. Noise | e. Vertebrates |
| c. Energy | f. Inclined plane |

Q VI) Choose the odd one out and name the category to which the others belong: [4]

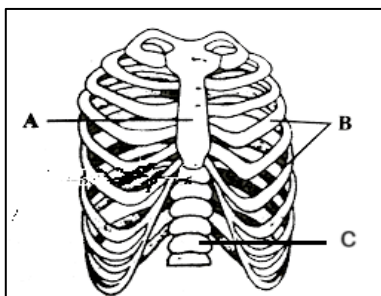
- a. Ramp, screw, crane, aeroplane
- b. Femur, shoulder blades, shinbone, calf bone
- c. Water, coal, oil, natural gas
- d. Knees, wrists, fingers, toes

Q VII) Distinguish between the following with reference to what is stated within the brackets:

[5]

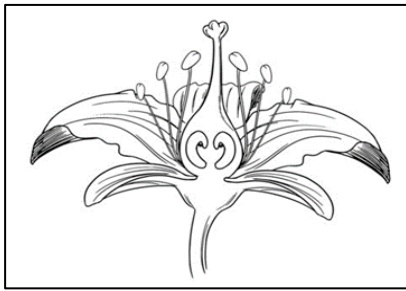
- a. Pivot Joint and Hinge Joint (Type of movement allowed)
- b. Arteries and Veins (function)
- c. Voluntary and Involuntary muscles (one example each)
- d. Fixed pulley and movable pulley (mechanism)
- e. Pleasant and Unpleasant sound (meaning)

Q VIII A) With reference to the given diagram, answer the questions that follow:



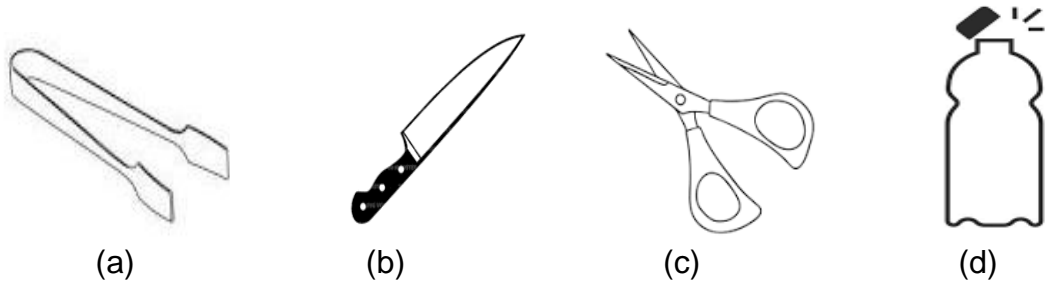
- a. Identify the part of the skeleton in the diagram.
How many pairs of bones are present in all? [1]
- b. Label the parts 'A' and 'C'. [1]
- c. What is the function of part 'B'? [1]
- d. What is the special name given to the last two pairs of bones and why? [2]

Q VIII B) Observe the figure given below and answer the questions that follow:

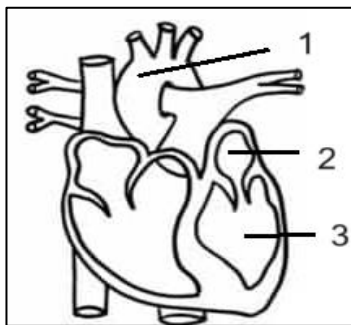


- a. Name the female reproductive part of the flower. Mention its three parts. [2]
- b. Which part of the flower matures to form the fruit? Where do the seeds come from? [1]
- c. What is the outermost whorl of a flower known as and what are they individually known as? State one of its functions. [2]

Q VIII C) Identify the type of simple machine as shown in the pictures given below. Give one example of each type different from the one shown: [4]



Q VIII D) Observe the figure given below and answer the questions that follow:



- a. Which organ is shown in the picture? State its location and function. [2½]
- b. Label the parts '1', '2' and '3'. [1½]
- c. Write a short note on the two main veins of the human body. [2]

Q IX) Answer the following questions:

- a. What are the two necessary conditions for work to be done? [2]
- b. What is posture? Why is it important to maintain a good posture? [2]
- c. How is a fractured bone healed? [2]
- d. Discuss the formation of fossil fuels. [2]
- e. List down any two ways to reduce noise pollution. [2]

Q X A) Give scientific reasons for the following: (Give two reasons for each) [8]

- a. A screw is a modified inclined plane.
- b. The chambers of the heart are connected by valves or flaps that open or shut.
- c. When we boil water in a vessel, the lid of the vessel gets lifted up.
- d. Densely growing plants are effective in controlling sound.

Q X B) Draw a neat labelled diagram of self-pollination. [2]
