

GREENLAWNS SCHOOL, WORLI
Terminal Examination 2024
Geography

Std: VI
Date: 24.09.2024

Marks: 80
Time: 2 hours

Section A (40 marks)

Q1) Choose the correct answer from the given options:

[10]

1. Rio de la Plata is an example of a/an _____.
 - a. gulf
 - b. bay
 - c. estuary
 - d. port

2. Which of the following is not an example of Rift Valley?
 - a. The East African valley
 - b. The Rhine valley
 - c. The Narmada valley
 - d. The Ganga valley

3. Identify the correct sequence:
 - i. Some of the rainwater seeps underground, some fills up depressions to form lakes, some flow into rivers which carry water to the oceans.
 - ii. Reaching the higher level, it cools and condenses into tiny water droplets.
 - iii. The water evaporates as water vapour is light in weight, it rises in air.
 - iv. Clouds become heavy and cannot remain suspended in air; it comes down as precipitation.
 - a. iii, ii, iv, i
 - b. iii, i, iv, ii
 - c. ii, i, iv, iii
 - d. iii, iv, ii, i

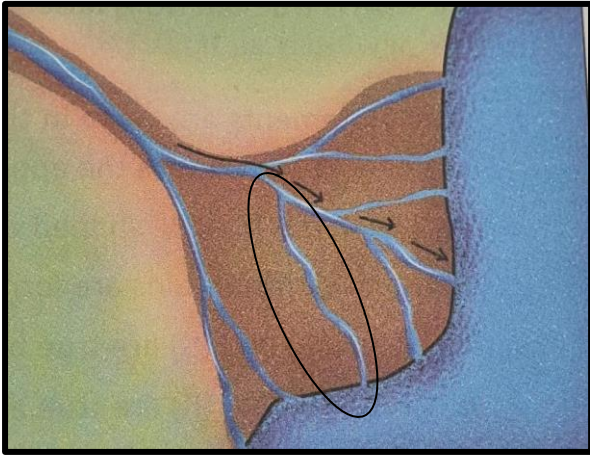
4. The _____ highland is the home for the world's highest waterfall.
 - a. Guiana
 - b. Brazilian
 - c. Patagonian
 - d. Andes

5. Match List I with List II and select the correct answer using the codes given below:

List I	List II
i. young fold mountains	1. The Vindhya
ii. block mountains	2. The Alps
iii. old fold mountains	3. The Aravallis

- a. i-1, ii-2, iii-3
- b. i-3, ii-1, iii-2
- c. i-2, ii-1, iii- 3
- d. i-2, ii-3, iii-1

6.



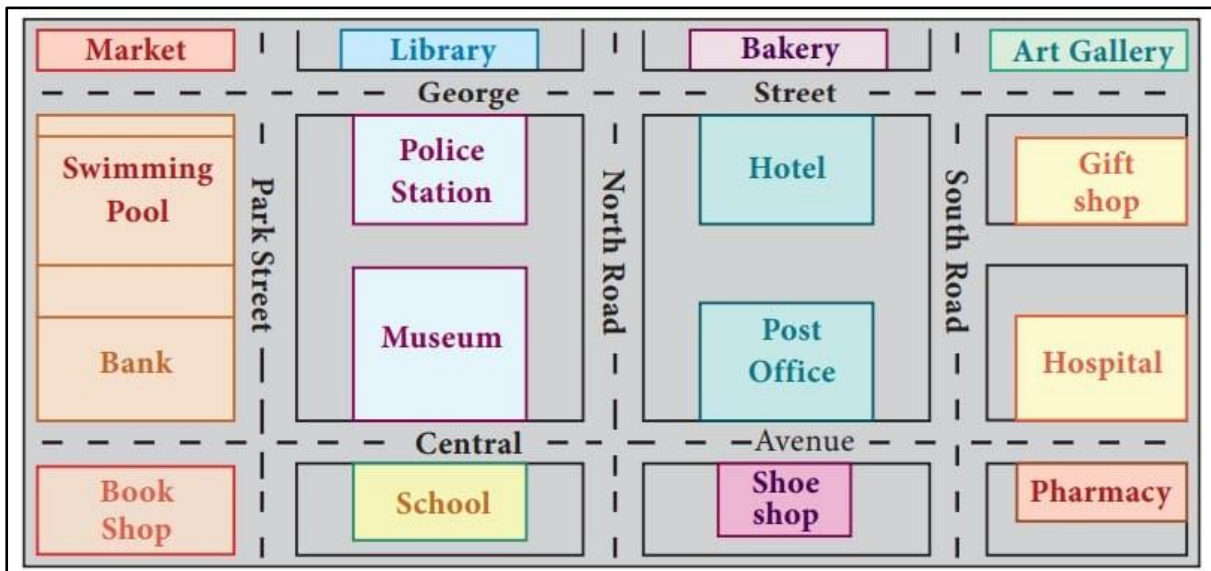
Identify the feature

- a. distributary
- b. tributary
- c. delta
- d. a river island

7. The plateau of _____ has evolved into a cold desert.

- a. Mato Grosso
- b. Atacama
- c. Bolivia
- d. Patagonia

Answer question 8, 9 and 10 looking at the following diagram:



8. In which direction is the bakery from the museum?

- a. north-west
- b. north-east
- c. south- east
- d. south-west

9. In which direction will you move from the post office to go to the bank?
 - a. south-west
 - b. east
 - c. west
 - d. north-east

10. In which direction is the school from the market?
 - a. south-east
 - b. south
 - c. south-west
 - d. north-west


QII) Map Marking **[10]**

- i) On the political map of South America, mark and label the following: (4)
 - a. Paraguay
 - b. Chile
 - c. Venezuela
 - d. Bolivia

- ii) On the physical map of South America, mark and label the following: (6)
 - a. Caribbean Sea
 - b. Brazilian Highlands
 - c. Patagonian Desert
 - d. Amazon Basin
 - e. Mt. Cotopaxi
 - f. Falkland Islands

QIII) Name the following: **[10]**

1. The world's largest archipelago:
2. Identity the symbol:



(blue)
3. The southernmost tip of South America:
4. The delta that spreads over the southern parts of West Bengal and Bangladesh:
5. Name the world's deepest freshwater lake:
6. An archipelago separated from the mainland of South America by the Magellan Strait:
7. The art of drawing maps is called:
8. The largest waterfall system in the world:
9. Mineral found in the Chota Nagpur Plateau:
10. A river which floods almost every year causing loss to life and property:

QIV) State whether the following statements are true or false. If false, rewrite the statement: **[10]**

1. The processes that take place below the surface of the Earth, in the interior, are known as exogenous processes.
2. Anticline are the down-fold portions of a fold mountain.

3. The Three Gorges Dam of the river Yamuna is a colossal hydropower project in the world.
4. The place where a river begins is its mouth.
5. Lake Maracaibo is one of the oldest lakes on Earth.
6. The famous Niagara Falls lies between Lake Erie and Lake Ontario.
7. Agriculture, handicraft production and tourism are common occupations in plains.
8. Pampas lies to the north of South America.
9. The location and shape of continents can be seen quite precisely on a globe.
10. Lake Victoria is the chief source of water supply to the river Nile.

Section B (40 marks)

QV) Answer in one or two sentences: **[6]**

1. Why is the Atlantic Ocean the busiest of all oceans?
2. Why is there uneven distribution of population in South America?
3. Why are the Selvas known as the 'lungs of the world'?
4. What is a grid?
5. Name the waterbodies surrounding the South American continent.
6. How are the meanders formed?

QVI) Explain the following terms: **[6]**

1. Conventional symbols
2. Weathering
3. Erosion
4. Biodiversity
5. Strait
6. Gulf

QVII) Give Reasons: **[5]**

1. Atacama Desert is the driest non-polar desert in the world
2. A plateau is known as tableland.
3. A plan gives a broad overview of a place.
4. Ocean currents play a major role in shaping the climate on the Earth.
5. Transport network is not well developed in the mountains.

QVIII) Answer in two or three sentences: **[8]**

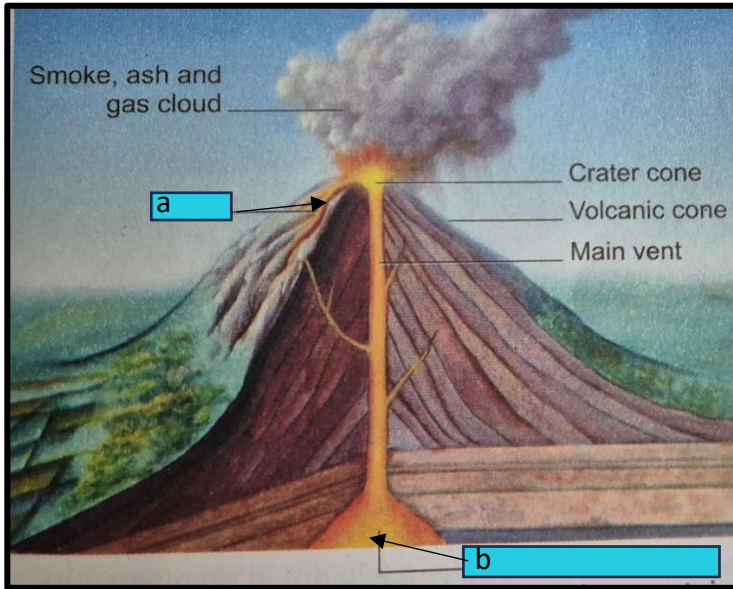
1. The northern plains of the Indian subcontinent is one of the populous regions of the world. Justify the statement.
2. State any two facts about the Galapagos Island.
3. How were the Andes mountains formed?
4. Why is scale used in a map. Give an example.

IX) Answer the following questions briefly: **[9]**

1. Why is there a water crisis on our planet even though most parts of the Earth are covered with water? **(3)**

- 2. Difference between fold mountains and block mountains. (3)
- 3. Write three points of difference between map and plan. (3)

QX) Picture-based question: [6]



- 1. Identify the picture. (1)
- 2. How is this landform created? (2)
- 3. Label the following: (2)
 - a. Label the feature 'a'
 - b. Label the feature 'b'
- 4. Which part of the world has the given landform in abundance? (1)
