

GREENLAWNS HIGH SCHOOL
SEMESTER I EXAMINATION
Environmental Studies
IX – 7/10/24

Maximum Marks: 80

Time allowed: Two hours

Answers to this Paper must be written on the paper provided separately.

The time given at the head of this Paper is the time allowed for writing the answers.

Attempt all the questions from Section A. Attempt any four questions from Section B.

The intended marks for questions or parts of questions are given in brackets [].

SECTION A

(Attempt all questions)

Question 1

Choose the correct answers to the questions from the given options.

(Do not copy the question, Write the correct answer only.)

[16]

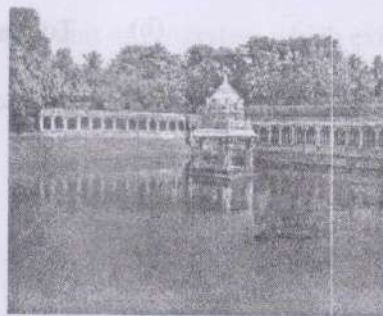
(i) Social movement against the building of dam over Kunthipuzah river.

- | | |
|---------------------|-------------------|
| (a) Narmada bachao | (b) Silent valley |
| (c) Non-cooperation | (d) Great valley |

(ii) Tarun Bharat Sangh is headed by

- | | |
|--------------------|-----------------|
| (a) Ravi singh | (b) Sunil singh |
| (c) Rajendra singh | (d) Samer singh |

(iii) Below figure represent which tradition method of water harvesting.



- (a) Johads (b) Bunds
(c) Eris (d) Kundas
- (iv) Bio geographical zone of India which is identified as priority Global 200 Ecoregion.
(a) Deccan plateau (b) North-east India
(c) Western Ghats (d) Gangetic plain
- (v) Coral reefs are made from
(a) calcium bicarbonate (b) calcium carbonate
(c) calcium nitrate (d) calcium sulphate
- (vi) The plants found growing in north-western desert regions.
(a) mesophyte (b) halophyte
(c) hydrophyte (d) xerophyte
- (vii) Endangered species found in Himalayan zone.
(a) Ibex (b) Snow leopard
(c) Tapir (d) Hangul
- (viii) Middle zone of fresh water pond.
(a) Limnetic (b) profundal
(c) Littoral (d) aphotic
- (ix) Treeless or rolling ground found in cold region.
(a) Taiga (b) Tundra
(c) Tropical (d) Mediterranean

(x) Competition is represented by

(a) +, +

(b) 0, 0

(c) -, -

(d) +, -

(xi) _____ is a grassland in tropical regions.

(a) Savannas

(b) Pampas

(c) Prairies

(d) Steppes

(xii) Tall forest trees are regarded as the _____ community

(a) pioneer

(b) climax

(c) psammosere

(d) hydrosere

(xiii) Process by which plant and trees release back water into the atmosphere.

(a) transpiration

(b) evaporation

(d) infiltration

(d) precipitation

(xiv) Bacteria found on the roots of leguminous plants

(a) cyanobacter

(b) zospirillum

(c) rhizobium

(d) azotobacter

(xv) Process in which the energy in glucose is transferred to ATP.

(a) photosynthesis

(b) respiration

(c) transpiration

(d) assimilation

(xvi) _____ is the fundamental unit of ecosystem which exists independently.

(a) species

(b) population

(c) community

(d) organism

Question 2

- (i) Write two effects of soil pollution. [2]
- (ii) Write about two types of competition? [2]
- (iii) Why energy flow is considered as unidirectional? [2]
- (iv) Write two effects of human activities on carbon cycle. [2]

Question 3

- (i) Give two features of grassland ecosystem. [2]
- (ii) Define western ghats and state its extent. [2]
- (iii) Write two modern methods of rainwater harvesting. [2]
- (iv) What is meant by improvement in global quality of life. [2]

Question 4

- (i) Define community. [2]
- (ii) Define 2 broad categories of food chain. [2]
- (iii) What is assimilation? [2]
- (iv) How human activities have changed the landscape of Tundra region? [2]

SECTION B

(Attempt any **four** questions from this section)

Question 5

- (i) What does the study of environmental science include? [5]
- (ii) Discuss the impact of extinction of species. [5]

Question 6

- (i) What is trophic level of an organism? Explain various trophic levels. [5]
- (ii) Explain in brief the ecological succession from bare rock to forest. [5]

Question 7

- (i) Discuss various threats to temperate grassland. [5]
- (ii) Write in detail about semi arid zone. [5]

Question 8

- (i) What are drawbacks of building dams? [5]
- (ii) Explain how carbon cycle works. [5]

Question 9

- (i) What are features of forest ecosystem? [5]
- (ii) Write short note on trans Himalayan zone. [5]

Question 10

- (i) What is roof top harvesting? Name and explain all the part of this water harvesting structure. [5]
- (ii) What is natural selection? Discuss Darwin's theory of evolution by natural selection. [5]