

GREENLAWNS HIGH SCHOOL

TERMINAL EXAMINATION YEAR 2024- 2025

DATE: 26/9/24

SUBJECT: GEOGRAPHY

CLASS: VII

TIME: 2 HOURS

MARKS: 80

SECTION-I

25m

Q I Choose the correct answer to the questions from the given options. (Do not copy the question. Write the answers only)

10m

1. Lines joining places having equal temperature are called \_\_\_\_\_.
  - a Isotherms
  - b Latitudes
  - c Isohyets
  - d Longitudes
2. Rainfall caused when a physical barrier such as a mountain, forces moisture bearing winds to cause rain is called \_\_\_\_\_ rainfall.
  - a Orographic rainfall
  - b Cyclonic rainfall
  - c Convectional rainfall
  - d Orogenic rainfall
3. Moving air is called \_\_\_\_\_.
  - a rain
  - b sleet
  - c wind
  - d dew
4. \_\_\_\_\_ is a monolithic hill.
  - a Hamersley range
  - b Musgrave range
  - c Barkly tableland
  - d Ayers rock
5. Australia lies in the \_\_\_\_\_ and \_\_\_\_\_ hemisphere.
  - a Western and southern hemisphere
  - b Eastern and southern hemisphere
  - c Northern and eastern hemisphere
  - d Western and northern hemisphere

6. \_\_\_\_\_ is a region of inland drainage in Australia.
- Murray Darling basin
  - Great Dividing Range
  - Gulf of Carpentaria
  - Eyre basin
7. \_\_\_\_\_ is the most common form of precipitation.
- Rain
  - Hail
  - Sleet
  - Snow
8. About 200 million years ago, all the continents of the world were joined together to form a huge landmass called \_\_\_\_\_.
- Laurasia
  - Gondwanaland
  - Zululand
  - Pangea
9. The scientific study of weather conditions is called \_\_\_\_\_.
- archaeology
  - meteorology
  - astrology
  - radiology
10. \_\_\_\_\_ is a device used to measure Atmospheric pressure.
- Hygrometer
  - Barometer
  - Thermometer
  - Centimetre

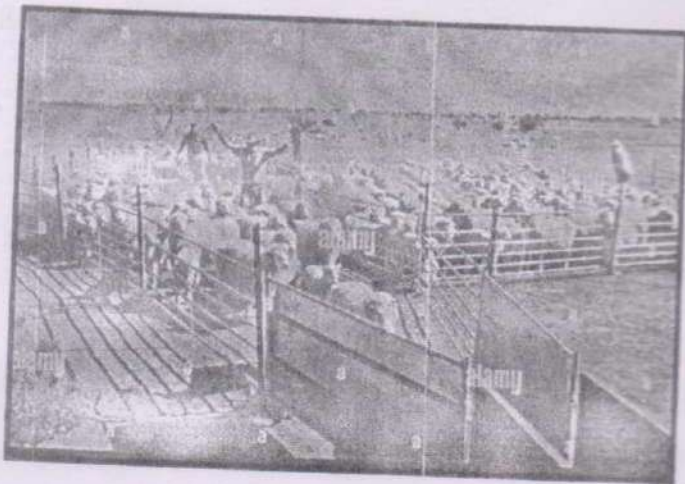
**Q II Fill in the blanks**

5m

- \_\_\_\_\_ is used to measure the speed of wind and \_\_\_\_\_ is used to determine the direction of the wind.
- Australia, New Zealand and adjoining island groups in the Pacific Ocean are called \_\_\_\_\_.
- \_\_\_\_\_ is the national capital of Australia.
- \_\_\_\_\_ is the highest peak of the Great Dividing Range.

**Q III** Study the picture below and answer the following:

3m



1. Large farms covering hundreds of hectares of land are called \_\_\_\_\_.
2. When these large farms are divided into number of fields by fences, they are known as \_\_\_\_\_.
3. The owner of these large farms is called \_\_\_\_\_.

**Q IV** Match the following:

3m

	State		Capital
1	New South Wales	A	Darwin
2	Northern Territory	B	Adelaide
3	Tasmania	C	Sydney
4	South Australia	D	Brisbane
5	Queensland	E	Melbourne
6	Victoria	F	Hobart
		G	Perth

**Q V** Complete the table:

4m

1	It is formed due to cracks or fissures in the Earth's crust.	A	
2	It separates Australia from New Guinea island in the north.	B	
3	It separates Australia from Tasmania.	C	
4	It extends from the Gulf of Carpentaria in the north to the southern coast in Australia.	D	

SECTION-II

25m

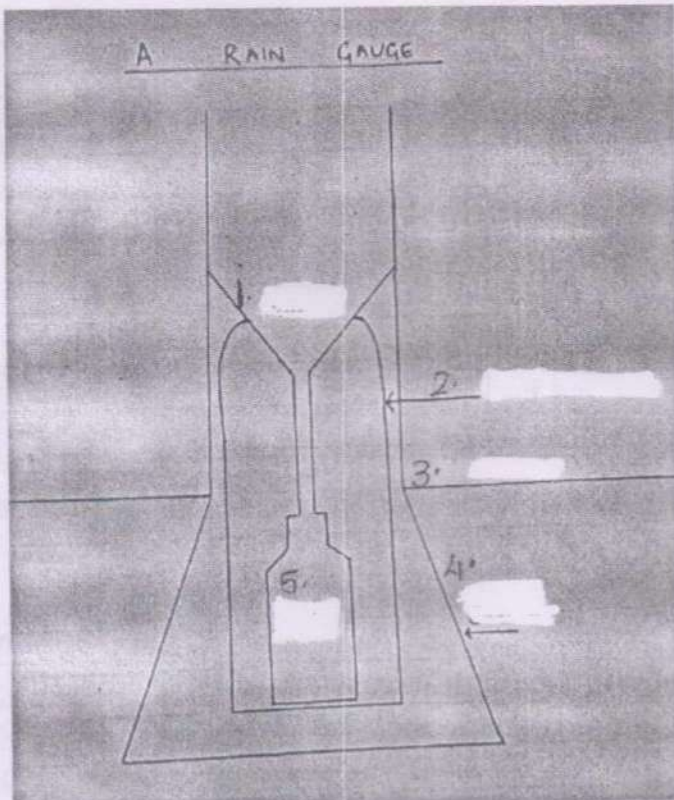
Q VI Differentiate between the following:

8m

1. Celsius and Fahrenheit scale.
2. Weather and climate.
3. Cirrus clouds and Nimbus clouds.
4. Absolute Humidity and Relative Humidity.

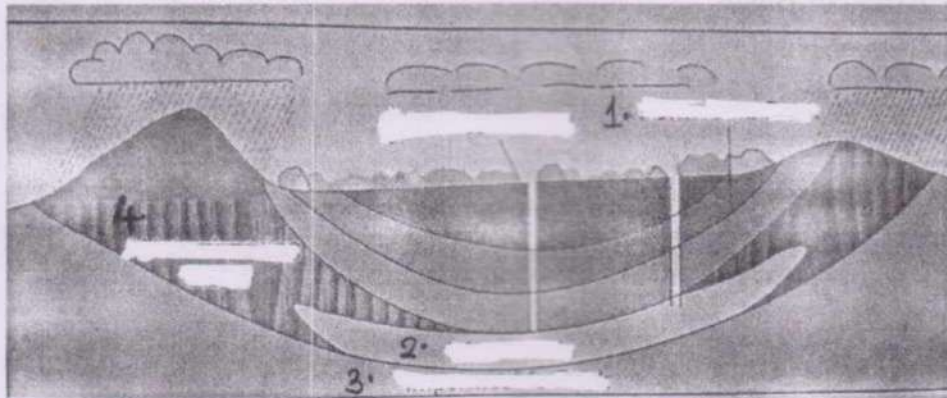
Q VII Answer the questions:

1. Explain how altitude and distance from the sea affects the temperature of a place. 2m
2. Define atmospheric pressure. 1m
3. What do you mean by the term 'sheep rearing'? 2m
4. What does Uluru mean in the Aboriginal language? 1m
5. Name the common breeds of sheep, cross bred in Australia. 1m
6. Label the diagram. [Any four] 2m



7. Picture study

5m



- Identify the picture.
- Label the diagram.
- How is the above feature beneficial to Australia? [2 points]

8. Give geographical reasons for the following:

3m

- The Great Barrier Reef is called so.
- Australia is called an island continent.
- South-east region of Australia are ideal grounds for sheep rearing.

SECTION-III

30m

1. Mark, label and shade the following on Map 1:

10m

A States/Federal territories and its capital.

- Northern territory
  - New South Wales
- B Waterbodies
- Arafura Sea
  - Gulf of Carpentaria
  - South Pacific Ocean
  - Tasman Sea
  - Gulf of Spencer
  - The Great Australian Bight

2. Mark, label and shade the following on Map 2:

10m

A Mountain ranges and highlands.

- Kimberley plateau
- Darling Range
- MacDowell Range
- Australian Alps
- Nullarbor plains

**B Lakes and rivers**

- a The Great Artesian Basin.
- b The Great Barrier Reef
- c River Lachlan
- d River Warburton
- e River Murray

**3. Mark, label and shade the following in Map 3:**

5m

**A Climate types:**

- a Tropical monsoon climate
- b Mediterranean climate

**B Vegetation types:**

- a Desert vegetation
- b Tropical Grasslands
- c Temperate forests

**4. Mark, label and shade the following on Map 4:**

5m

**A Winds**

- a Scanty rainfall
- b Heavy rainfall

**B Rainfall**

- a Westerlies
- b North-west monsoon winds
- c Westerlies (Winter)

MAP-1

125

135

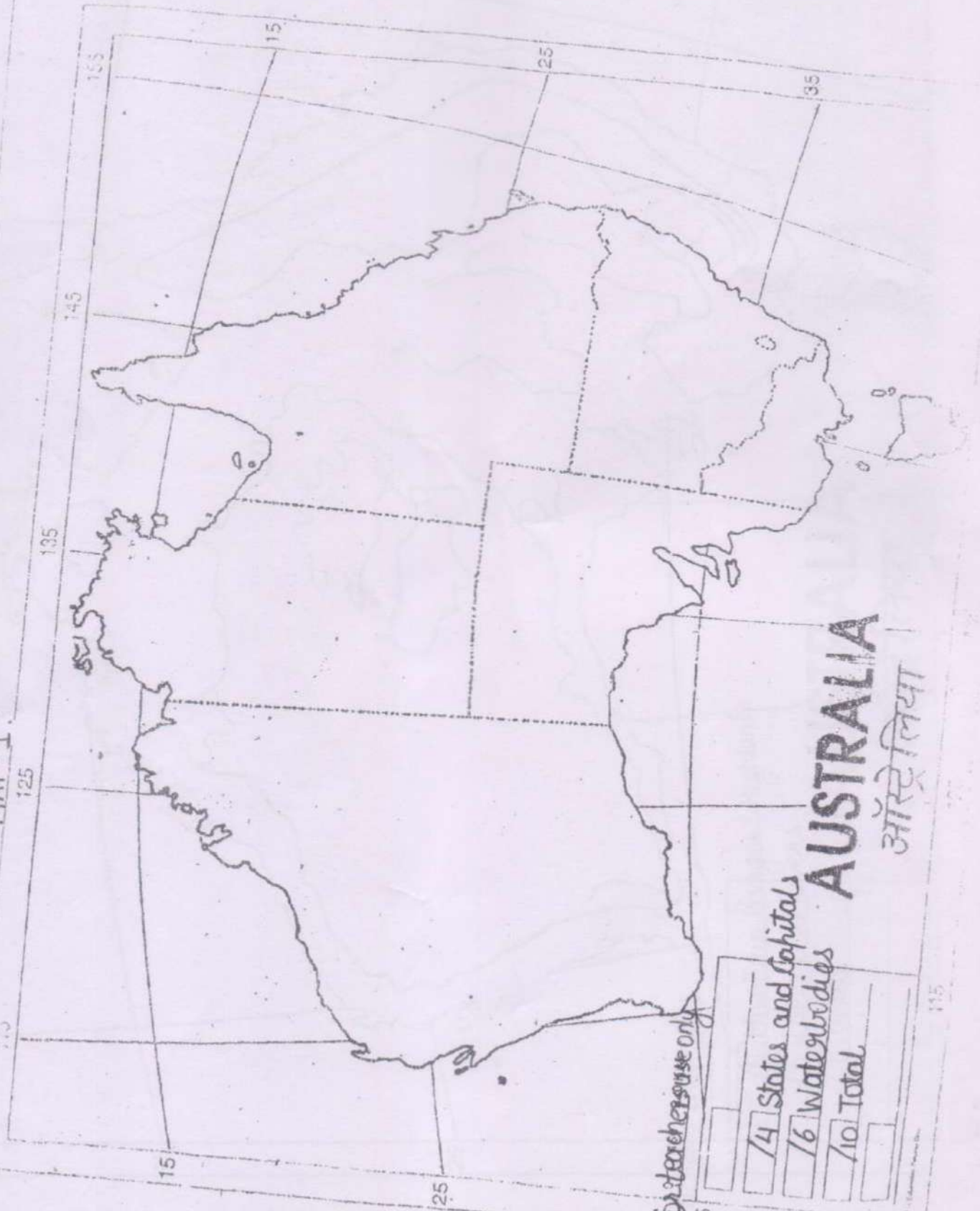
145

155

15

25

35



For teacher use only

<input type="checkbox"/>	4 States and Capitals
<input type="checkbox"/>	6 Waterbodies
<input type="checkbox"/>	10 Total
<input type="checkbox"/>	

AUSTRALIA

ऑस्ट्रेलिया