

Std: 6 A, B, C

Greenlawns High School

Date:

Marks: 80

Computer Science Terminal Examination

Time: 2 HR

Please note : • All answer to be written in the answer booklet.

• Attempt all questions and be neat.

**Q1). A .Choose the correct option from the following: [15m]**

1. A small square at the bottom right corner of the table is the \_\_\_\_\_ handle.  
a). Table Move b). Table Delete c). Table Resize d). Table Row
2. \_\_\_\_\_ language is written in the form of a string 0's and 1's.  
a). Fourth generation b). Assembly c). High level d). Binary
3. The horizontal series of cell in a table is called \_\_\_\_\_.  
a). file b). row c). column d). cell
4. Any picture , document or presentation created in a computer is called a \_\_\_\_\_.  
a). word file b). presentation c). file d). folder
5. A program written in the assembly language or high level language is called \_\_\_\_\_.  
a). Assembler b). source code c). object code d). compiler
6. Three-four letter identifier that helps in identifying the type of a file is called \_\_\_\_\_.  
a). file extension b). image c). wildcard d). folder
7. A \_\_\_\_\_ is made of rows and columns.  
a). file b). folder c). clipart d). table
8. The default sprite in Scratch is the \_\_\_\_\_ sprite.  
a). butterfly b). ballerina c). cat d). ball
9. \_\_\_\_\_ computers are used in homes , schools , shops, office, banks etc.  
a). micro b). mini c). super d). mainframe
10. You can use \_\_\_\_\_ characters to locate the file ,if you know only a part of the file.  
a). Numeric b). Wildcard c). Trumpcard d). Extension
11. \_\_\_\_\_ show/hides the sprite.  
a). show b). hide c). next costume d). back arrow

12. \_\_\_\_\_ is considered to be india's first supercomputer.  
 a). prolog b). param 8000 c). pratayush d). analytic engine.
13. The \_\_\_\_\_ is the place/area where you add your sprite.  
 a). sprite editor b). game c). stage d). scratch
14. The different partitions of a hard disk are called \_\_\_\_\_.  
 a). file b). folder c). drives d). microprocessor
15. In Scratch , the area where the instructions are stacked is called the \_\_\_\_\_.  
 a). hide b). script area c). next costume d). program

**B.State whether the following statement are True or False. [5m]**

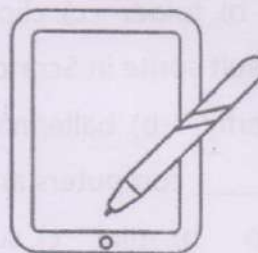
- The table move handle is used to resize the table.
- PROLOG is an example of 5GL.
- Python and Ruby are examples of Assembly languages .
- Each file has its own extension.
- New backdrop option is used to change the position of the sprite .

**Q2).A.Match the following: (6m)**

File icon (A)	File extension(B)
1. Ms Word	a).png
2. Video	b).xlsx
3. Ms Powerpoint	c).mp3
4. Audio	d).mp4
5. Ms Excel	e).docx
6. Image	f).pptx

**B.Observe the picture and answer the following:**

- Identify the gadget?
- Name the type of a computer it is according to the size?
- Why is it popular now a days?



**[4m]**

**Q3).A.Name the following: (6m)**

- The biggest and the most powerful computers.
- The block is used to start a script.
- One translator.

4. The intersection of a row and a column forms a box.
5. Full form of PDA .
6. The process of creating a program or code .

**B.Observe the figure and answer the following question.**

**[4m]**



A \_\_\_\_\_



B \_\_\_\_\_

- 1.Name the block A and B?
- 2.Write the function of block A and B?

**Q4).A.Application based question:**

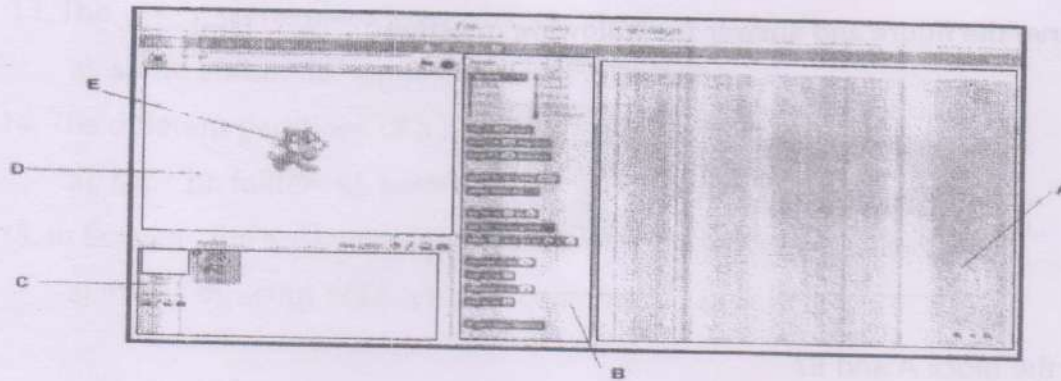
**[5m]**

1. Sumit had created a project in Scratch. He wants to add a new sprite in the project that he has created. What option he should click on?
2. Sunita is trying a Java programming ,but she does not know which type of language it is? Help her to identity it?
- 3.Akshat wants to search his mathematics project that he had made few days ago. He forgets the name given to the project but it starts with letter M and is a document file. Help him search his file ?
- 4.Neha works in a government office and wants to process bulk data .What type of computer should she use?
5. Akshay is a student of class VII . He has created the table showing articles with cost price and selling price. Help him calculate the total cost price and selling price automatically?(write the formula)

Articles	Cost price (RS)	Selling price (RS )
Radio	1500	1200
videogame	1800	2100
mixer	1000	800
oven	1100	1500
cell phone	5000	4100
TOTAL		

B.Label the figure given below .

[5m]



Q5).A.Answer the following in short.

[12m]

1. What is use of the Autofit content option in Resizing a table? (1m)
2. Write the need of sorting the files? Write the different ways in which you can sort the files? (3m)
3. Name any 4 ways in which you can create a table? (4m)
4. Write any 2 features of Scratch 2.0? (2m)
5. Write any 2 advantages of fourth generation language? (2m)

B.Differentiate between: (1 point each)

[8 m]

1. Compiler and Interpreter.
2. Asterisk (\*) and Question mark (?).
3. Merging cell and splitting cell .
4. Cell spacing and Cell padding.

Q6).A.Write the keyboard shortcut for the following.

[5m]

1. To move a file from one storage device to another storage device.
2. To move the cursor through the cells in the table.
3. To move the cursor to the left cell in a row.
4. To update the cell containing the total sum of the data.
5. To make duplicate copy of a file .

**B. Read the comprehension carefully and answer the following. (5m)**

Most operating systems, such as Windows and mac OS, provide built-in search features to help users locate their files and folders with. In Windows, the search function is integrated into the Start menu. On mac OS, the Spotlight search feature is used to find files and folders. By pressing Command + Space bar, users can open Spotlight and enter search terms. Spotlight not only searches for files and folders but also provides results from other sources like emails and web history.

Q. Answer the following

1. Name the two operating system?
2. What keyboard shortcut opens Spotlight search on mac OS?
3. In Windows where search function is located?
4. Why is it beneficial to use the built-in search tools on a computer?
5. Can Spotlight search on mac OS find results from sources other than files and folders?

----- **ALL THE BEST** -----