

GREENLAWNS HIGH SCHOOL  
TERMINAL EXAMINATION 2024  
SCIENCE

STD : 6 A,B,C

MARKS : 80

---

NOTE : ALL THE ANSWERS TO BE WRITTEN IN THE ANSWER BOOKLET.

Q.I) A. MULTIPLE CHOICE QUESTIONS : (10 MARKS)

1. The kinetic theory states that all matter is made up of tiny particles called \_\_\_\_\_
  - a. Atoms
  - b. Molecules
  - c. Protons
  - d. Electrons
2. An adult breathes \_\_\_\_\_ times a minute.
  - a. 16-20
  - b. 14-18
  - c. 10-14
  - d. 12-18
3. When using a 12 hour clock the time between 12 o'clock midnight and 12 o'clock noon the next day is referred to as \_\_\_\_\_
  - a. post meridian
  - b. pro meridian
  - c. anti meridian
  - d. meridian

4. Which one of these cannot be seen with our eyes, yet it is matter?
- Air
  - Water
  - Apple
  - Sound
5. The bullocks pulling a cart is an example of \_\_\_\_\_ force.
- Gravitational
  - Muscular
  - Magnetic
  - Electrostatic
6. A mean solar day has \_\_\_\_\_
- 365  $\frac{1}{4}$  days
  - 30 days
  - 24 hours
  - 6 months
7. \_\_\_\_\_ are a pair of spongy elastic organs.
- Liver
  - Stomach
  - Large Intestine
  - Lungs
8. \_\_\_\_\_ enables us to write on paper with pencil.
- Friction
  - Force
  - Pressure
  - Mass
9. More than  $\frac{3}{4}$ <sup>th</sup> of air is \_\_\_\_\_
- Carbon dioxide
  - Oxygen
  - Nitrogen
  - Hydrogen

10. Clothes dry fast when humidity of air is \_\_\_\_\_

- a. Minimum
- b. Maximum
- c. More
- d. Average

B. State whether True or False. If False, rewrite the correct underlined word. (5 MARKS)

- a. Water is a form of matter.
- b. All living things get their energy through transpiration.
- c. Wear and tear of soles of shoes is caused by force.
- d. Poor, unhealthy or unhygienic eating habits can cause indigestion.
- e. Use of a ball bearing in a ceiling fan increases friction.

C. Match the following : (5 MARKS)

- |                              |                 |
|------------------------------|-----------------|
| a. Force                     | i. Face of sun  |
| b. Alveoli                   | ii. Liver       |
| c. Bile juice                | iii. Newton     |
| d. Sundial                   | iv. Water Cycle |
| e. Interconversion of matter | v. Lungs        |

Q.II) A. Give Reasons (5 MARKS)

- a. Light is not considered as matter.
- b. The mass of the a body constant while its weight can vary.
- c. Amount of oxygen in air does not decrease even though it is continuously used in respiration.
- d. Solids are not compressible.
- e. If you immerse a bottle into water in the inverted position, water does not enter the bottle.

B. Name the following :

(10 MARKS)

- a. This closes the trachea when we swallow food.
- b. Gas that supports combustion
- c. The process in which plants use the absorbed nitrogen
- d. A common passage for food and air
- e. It is used for the measurement of body temperature
- f. Another name for food tube or pipe.
- g. The two types of forces
- h. Another name for larynx
- i. Food is chewed and mixed with saliva here
- j. A pigment present in the leaf which leaves it's green colour

Q.3) A. Write the properties of solids, liquids and gases on the basis of the following points. Make the same table in your answer sheet while writing the answer.

a.

(3 MARKS)

PROPERTY	SOLIDS	LIQUIDS
SHAPE		
RIGIDITY		
FREE SURFACE		

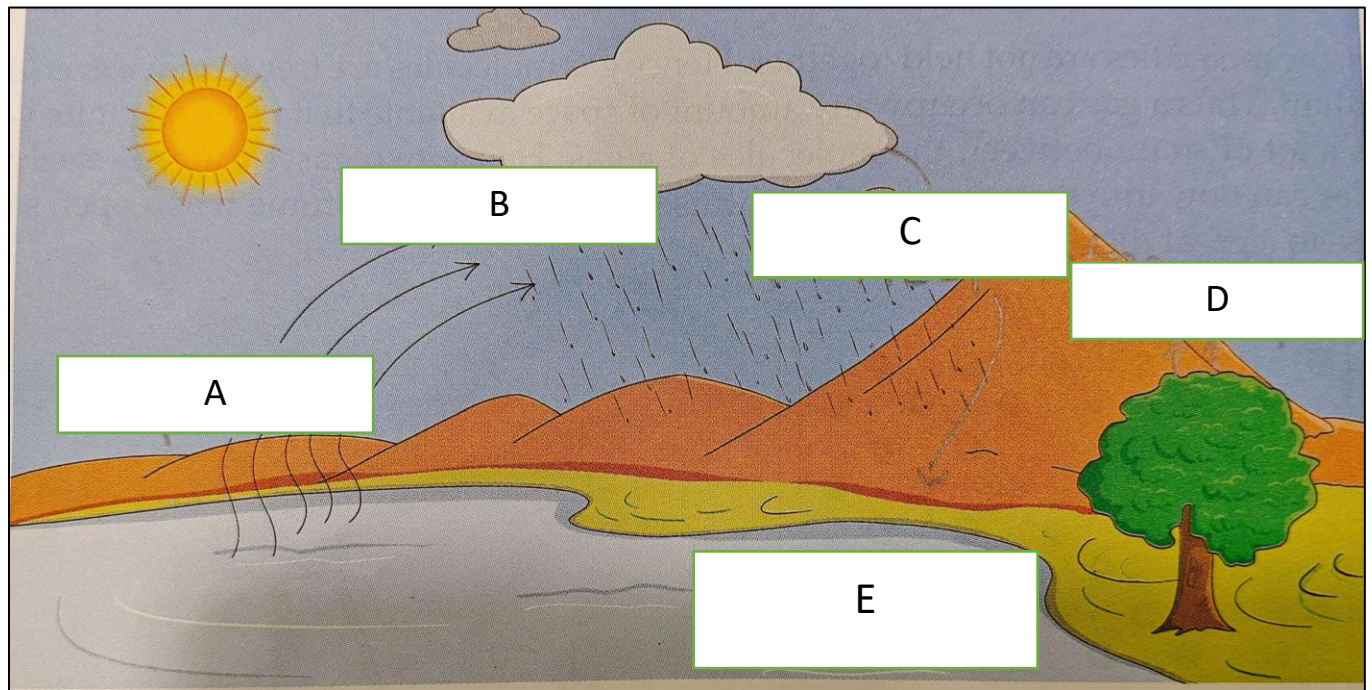
b.

(2 MARKS)

PROPERTY	SOLIDS	GASES
VOLUME		
COMPRESSIBILITY		

B. Label the diagram A,B,C,D,E

(5 MARKS)



Q.4) Answer the following :

(10 MARKS)

- What are the main constituents of air ?
- Define :
  - Length
  - Mass
- What is gravitational and magnetic force ?
- Write the physical properties of air. (any four)
- What is digestion ? Where is the faeces stored ?

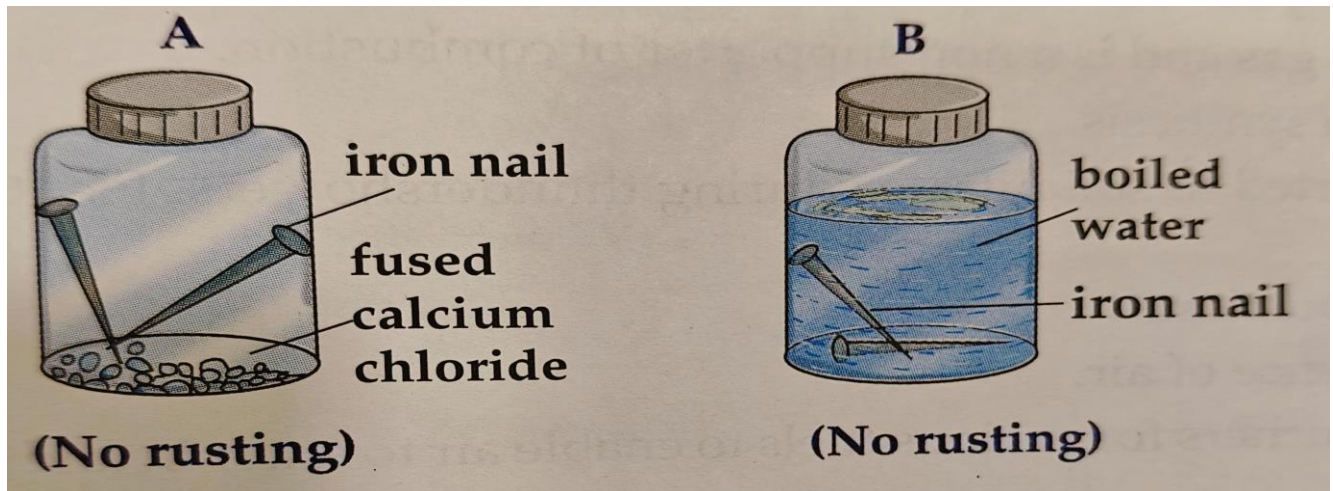
Q.5) A. Calculate the following :

(5 MARKS)

- 20 one rupee coins are stacked one over the other. The height of the column is 40 mm.  
Calculate the thickness of each coin. (in mm)
- A wire is wound over a pipe to form a coil. The length of the coil is 2.4 cm. Calculate the thickness of the wire, if there are 6 turns in it. (in cm)

- c. Calculate the average weight of 7 boxes of grapes. The weight of the boxes are 10 kg, 12 kg, 8 kg, 15 kg, 9 kg, 11 kg and 12 kg.
- d. Convert 12 m to mm
- e. Convert 3100 g to kg

B. Observe the given figure and answer the questions given below :  
(5 MARKS)



- a. What is rusting ?
- b. Write any two property changes that occur in iron when it undergoes rusting.
- c. What are the two things essential for rusting ?
- d. Why only oxygen is present in Jar A ?
- e. Why there is no rusting in Jar B ?

Q.6) A. Explain in detail : (6 MARKS)

- a. Bronchi
- b. Water vapour
- c. Effects of force on body (any 4)

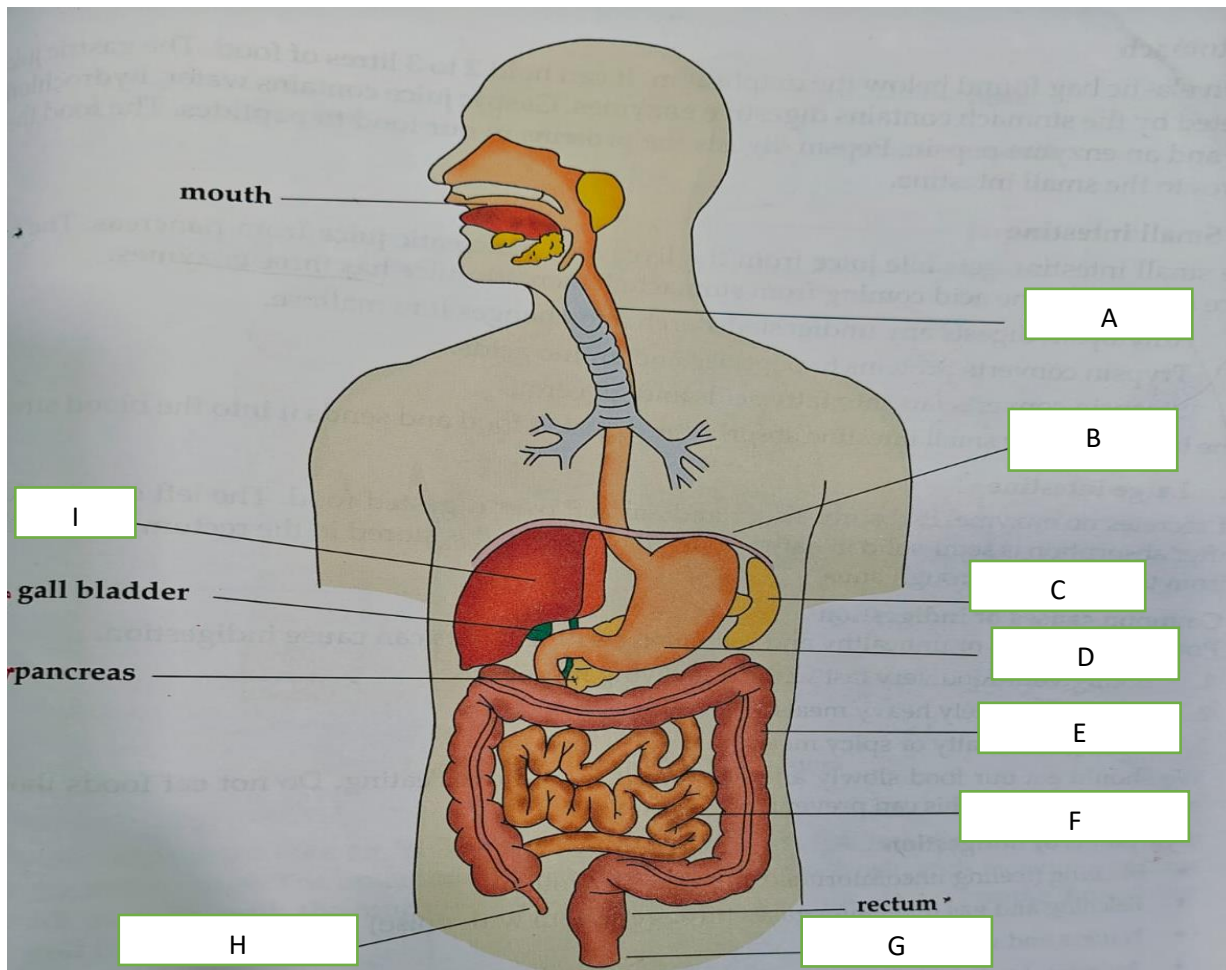
B. Identify the type of force :

(4 MARKS)

- a. A magnet attracting iron nails
- b. A plastic ruler attracting small pieces of paper
- c. An apple falls from a tree
- d. A man pushes a trolley

Q.7) QUESTIONS BASED ON THE DIAGRAM :

(10 MARKS)



a. Name the organ system

(1 MARK)

b. Name A,B,C,D,E,F,G,H,I

(9 MARKS)