

STD -V

GREENLAWNS HIGH SCHOOL

SUBJECT-SCIENCE

DATE- 01-10-24

DURATION- 2 HOURS

FIRST TERMINAL EXAM.

MARKS-80

NOTE- Please do not write the questions.

Answers to be written only on the answer script provided.

Q1] MULTIPLE CHOICE QUESTIONS.

(10m)

- 1) \_\_\_\_\_ system transports blood throughout the body.
  - i) Digestive
  - ii) Circulatory
  - iii) Excretory
  - iv) Nervous
- 2) Oil, butter and ghee are the sources of \_\_\_\_\_.
  - i) Carbohydrates
  - ii) Proteins
  - iii) Fats
  - iv) Others
- 3) \_\_\_\_\_ foods are good for digestion because they contain useful bacteria and yeast.
  - i) Fermented
  - ii) Fast
  - iii) Junk
  - iv) Healthy
- 4) The heart pumps blood at a regular rhythm called the \_\_\_\_\_.
  - i) Heart beat
  - ii) Heart rate
  - iii) Circulation
  - iv) None of these
- 5) Molecules are packed close to each other in a \_\_\_\_\_ substances.
  - i) Plasma
  - ii) Gas
  - iii) Liquid
  - iv) Solid

- 6) \_\_\_\_\_ tends to produce sturdier and more diverse plants.
- Stamen
  - Self-pollination
  - Cross-pollination
  - Corpse flower
- 7) \_\_\_\_\_ is made by the skin when the body is exposed to sunlight.
- Vitamin D
  - Vitamin A
  - Vitamin B12
  - All of these
- 8) The outermost part of a flower is called \_\_\_\_\_
- Corolla
  - Sepals
  - Petals
  - Calyx
- 9) Very strong wind accompanied by rain and thunder is called \_\_\_\_\_
- gale
  - thundering
  - storm
  - rainfall
- 10) The smallest particle of a substance that retains all the properties of the substance is known as the \_\_\_\_\_ of the substance.
- Molecule
  - volume
  - mass
  - none

Q2] TRUE OR FALSE. IF FALSE THEN CORRECT THE UNDERLINED WORD. (10m)

- The molecules of crystals have a uniform geometrical pattern.
- Anything that has mass and takes up space is called matter.
- Hibiscus is an example of bisexual flower.
- Night blindness is caused due to deficiency of vitamin c.
- Pistils are collectively called the androecium.
- The natural nutritional quality of the food is affected during the process of food adulteration.
- The percentage of oxygen in the atmosphere has increased due to burning of fuels.
- Eating seafood atleast once a week provides sufficient amount of fats.

- 9) Liquid do not have a fixed shape, they take the shape of the container.  
10) Male reproductive part of the flower is called stamen.

Q3] NAME THE FOLLOWING.

(10m)

- 1) Sweet juice like structure produced by flower.
- 2) Chemical that controls blood sugar levels.
- 3) Organ that pumps blood even when we are asleep.
- 4) Gas needed for burning.
- 5) Green leaf like structure which protects flower in bud condition.
- 6) Building block of human body.
- 7) The reproductive part of the plant.
- 8) Disease caused due to deficiency of proteins.
- 9) Country that has highest number of obese person.
- 10) Mineral from which the gigantic crystals are made.

Q4] FILL IN THE BLANKS.

(5m)

- 1) Two minerals found in fruits and vegetables are iron and \_\_\_\_\_
- 2) \_\_\_\_\_ gas is used in fluorescent lamps.
- 3) The two agents of pollination are bees and \_\_\_\_\_
- 4) Two pulses which can be sprouted and included in diet are chickpeas and \_\_\_\_\_
- 5) The adulterant added to paneer to increase its quantity is \_\_\_\_\_

Q5] DEFINE.

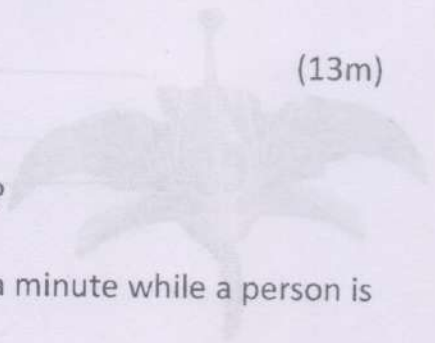
(7m)

- 1) Blood pressure.
- 2) Style.
- 3) Self- pollination.
- 4) Mass.
- 5) Solute.
- 6) Balanced diet.
- 7) Stamen.

Q6] ANSWER IN ONE SENTENCE.

(13m)

- 1) What is the function of a flower?
- 2) From which month does Monsoon wind blow?
- 3) What is the percentage of nitrogen in air?
- 4) How many times does a human heart beat in a minute while a person is at rest?



- 5) What is the disease caused by the deficiency of vitamin A?
- 6) Which is the sticky part of the pistil?
- 7) Where is heart located?
- 8) What are immiscible liquids?
- 9) By which force molecules are held together?
- 10) Which cells help to fight against the infection in humans?
- 11) In which disease does the bones become soft and twisted?
- 12) What is evaporation?
- 13) What is moving air called as?

Q7) DIFFERENTIATE BETWEEN. (5M)

- 1) Digestive system and respiratory system (w.r.t function)
- 2) Sea breeze and land breeze (w.r.t definition)
- 3) Solid and gas (w.r.t molecular arrangement)
- 4) Unisexual flower and bisexual flower (w.r.t definition)
- 5) Soluble and insoluble substances (w.r.t definition)

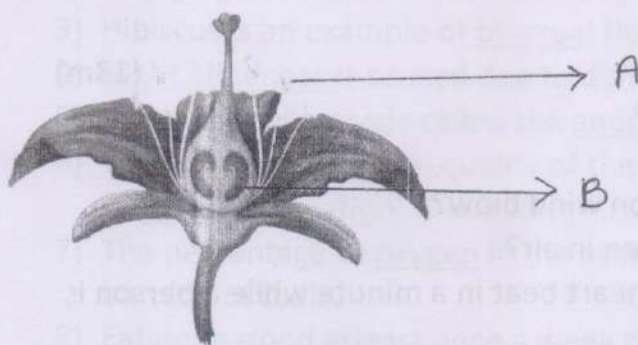
Q8) FROM THE FOLLOWING LIST OF WORDS WRITE DOWN THE SOLUBLE AND INSOLUBLE SUBSTANCES IN TABLE FORM. (5m)

Flour, vinegar, turmeric, mud, stones, milk powder, sand, cement, seeds and tea powder.

Example

Soluble	Insoluble
sugar	plastic

Q9) LABEL THE DIAGRAM GIVEN BELOW. (2m)



28

Q10) PICTURE STUDY.

(3m)



- 1) Identify and name the disease depicted in above picture.
- 2) Write the cause of the disease in answer (1).
- 3) State prevention for the disease in answer (1).

Q11) ANSWER THE FOLLOWING. (10m)

- 1) State two important functions of roughage.
- 2) Why is ventilator important?
- 3) Write any two favorite fruits and vegetables of yours. Why should one include fruits and vegetables in their diet?
- 4) State two properties of air.
- 5) State two functions of blood.

---

THE END  
ALL THE BEST