

GREENLAWNS HIGH SCHOOL

COMPUTER SCIENCE

FINAL EXAMINATION

STD : 5TH A/B/C

MARKS : 80

TIME : 2 HOURS

- **NOTE : ALL THE ANSWERS ON THE ANSWER SHEET. NO NEED TO COPY THE QUESTIONS.**

I. Multiple Choice Questions : (10 MARKS)

a) The hammer is a _____

- i. Pulley**
- ii. Lever**
- iii. Wedge**
- iv. Inclined plane**

b) The pollen grain sends out a tiny thread-like tube called a

- i. Anther**
- ii. Pollen tube**
- iii. Style**
- iv. Zygote**

c) The _____ bloom only at night and close during the day.

- i. Moonflowers**
- ii. Tulips**
- iii. Roses**
- iv. Hibiscus**

- d) The food chains that exist under water starts with very minute organisms called _____
- i. Blanktons
 - ii. Clanktons
 - iii. Planktons
 - iv. Flanktons
- e) Seeds usually have one or two seed _____ known as cotyledons.
- i. Leaves
 - ii. Flowers
 - iii. Stems
 - iv. Beans
- f) _____ is a practice of burning down parts of forests to clear it for farming or making human settlements.
- i. Hunting
 - ii. Land clearing
 - iii. Forest fire
 - iv. Pollution
- g) The garage door is an example of _____
- i. Pulley
 - ii. Lever
 - iii. Wedge
 - iv. Inclined plane
- h) Animals that feed on the dead plants and animals are called _____
- i. Herbivores
 - ii. Carnivores
 - iii. Scavengers
 - iv. Decomposers

i) The wind energy is converted into electrical energy by

- _____
- i. Electric Bulb
 - ii. Windmill
 - iii. Tube light
 - iv. Solar panels

j) _____ producers are also called autotrophs.

- i. Primary
- ii. Secondary
- iii. Tertiary
- iv. None of these

II. STATE WHETHER TRUE OR FALSE. IF FALSE, REWRITE THE CORRECT UNDERLINED WORD. (8 MARKS)

- i. The fixed point around which the rod moves is called the effort.
- ii. Wheat is energy - giving food.
- iii. Rose is an example of monosexual flower.
- iv. Animals that feed on both plants and animals are called carnivores.
- v. The process by which the seeds are scattered away from the parent plant is called seed dispersal.
- vi. The seed needs air, water, light and warmth to germinate.
- vii. Dispersal by explosion takes place in cocklebur seeds.
- viii. The sun is the artificial source of heat energy.

III. DEFINE :

(5 MARKS)

- a) Decomposition
- b) Fertilization
- c) Food chain
- d) Zygote
- e) Germination

IV. Name the following :

(10 MARKS)

- a) It is a tilted surface used to move a heavy load with less effort.
- b) It is used for the production of biogas.
- c) It is produced from vegetable oils and animal fats and is used to run vehicles.
- d) These are agents of pollination. (any 2)
- e) It is the practice of cutting down trees and removing vegetation from a forest area for farming and other human activities.
- f) The process by which living organism produces more of its own kind.
- g) Full form of LPG
- h) Flower of watermelon. (type of flower)
- i) The outer covering of the seed.
- j) These seeds have hair that act like a parachute.

V. DIFFERENTIATE BETWEEN : (NO EXAMPLES)

(6 MARKS)

- a) Work and Energy (definition)
- b) Herbivores and carnivores
- c) Mechanical energy and solar energy

VI. Mention whether work is done or work is not done in the following activities : (3 MARKS)
(the first one is done for you as an example)

- a) Walking : Work is done
- b) Carrying a load up a staircase
- c) Sitting and reading a book
- d) Holding a heavy load but not moving

VII. List the ways in which the seeds/fruits of given plants are dispersed (4 MARKS)
(EXAMPLE : Nuts : dispersal by animals)

- a) Coconut palm
- b) Balsam
- c) Maple seeds
- d) Berries

VIII. Answer the following questions : (15 MARKS)
A. EXPLAIN IN DETAIL :

- a) The three parts of pistil
- b) What is a pulley ? Name different types of pulley. (no examples)
- c) What is the process of pollination ? Name the different types of pollination. (no examples)
- d) The three natural causes of imbalance in nature.
- e) Why do all seeds not grow into new plants ?

B. What are renewable energy sources ? Give one example. (2 MARKS)

C. How does formation of fruits and seeds take place after fertilization ? (2 MARKS)

IX. PICTURE STUDY :



A.

(2 MARKS)

- i. Name the useful tool that the boy is using
- ii. Which type of simple machine it is – a lever, wheel and axle, pulley, wedge or screw ?

B. TYPE OF ENERGY PRODUCED BY THE FOLLOWING : (3 MARKS)

i.



burning of fuel for cooking



ii.

Electric Bulb



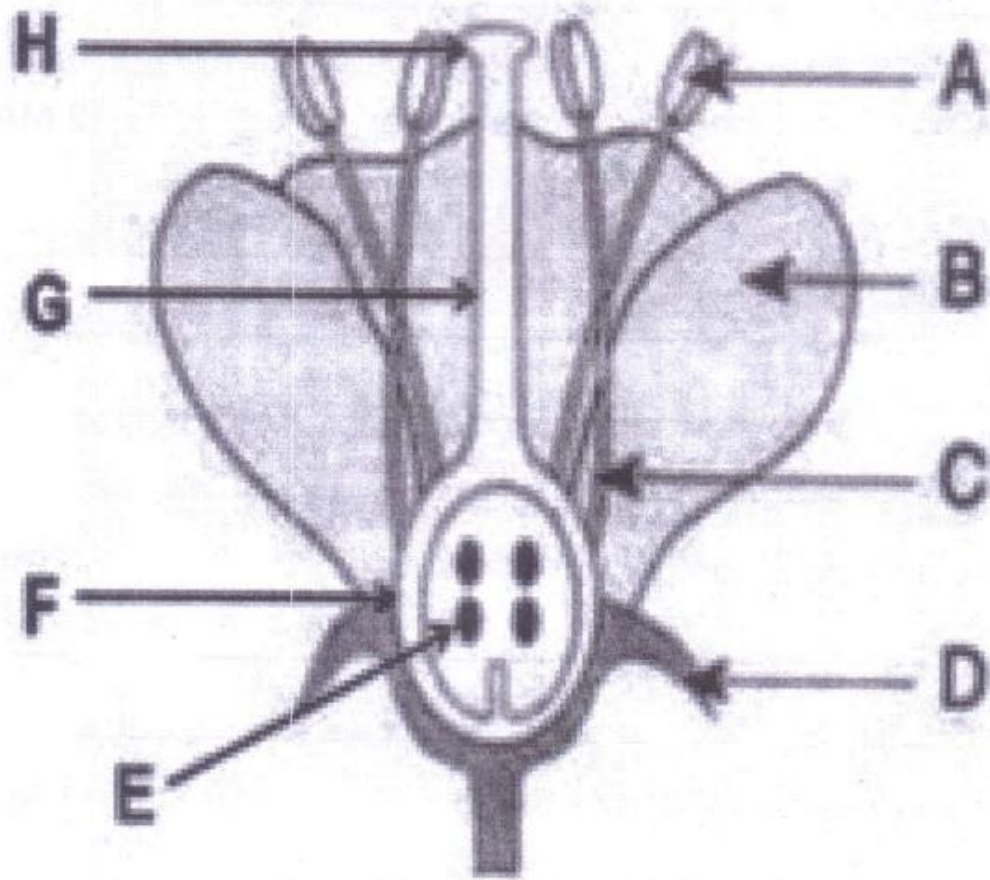
iii.

Alarm clock ringing

C. i) NAME THE DIFFERENT PARTS OF FLOWER

a) A,B,C,D,E

(5 MARKS)



b) Name the four whorls of the flower

(4 MARKS)

c) Name one function of A

(1 MARK)