

GREEN LAWNS HIGH SCHOOL  
FINAL EXAMINATION 2024

SUBJECT: G. SCIENCE  
STD VI A,B,C

TIME: 2 HOUR  
MARKS: 80

- All answers to be written on the booklet provided.
- You will not be allowed to write during the first 10 minutes. Use this time to read the paper carefully.
- Write concise answers using scientific terms. Be neat.

Q1. Fill in the blanks: (Do not copy the sentence) [5]

- A \_\_\_\_\_ is a device consisting of a network of wires or plastic net attached to a ring or frame.
- The body of water hyacinth is \_\_\_\_\_ and have air sacs.
- Body of both fish and bird are \_\_\_\_\_.
- Mixtures are \_\_\_\_\_ substances.
- A dissolved solid can be separated from its solution by the process of \_\_\_\_\_.

Q2. Choose the correct answers to the questions from the given options. [6]

(Do not copy the question, write the correct answers only.)

- The process of pouring out the upper layer of clear liquid without disturbing the sediment is called \_\_\_\_\_.  
(a) Sedimentation (b) Evaporation  
(c) Decantation (d) Distillation
- Which of the following methods are used for separating the components of a mixture that are of different size?  
(a) hand picking and winnowing (b) magnetic separation  
(c) sieving (d) evaporation
- Amoeba has .....  
(a) Chloroplast (b) chromoplasts  
(c) pseudopodia (d) plastids

iv. Which of the following is found only in a plant cell?

- (a) cell membrane (b) cell wall (c) cytoplasm (d) nucleus

v. A shadow is always

- (a) dark (b) bright  
(c) same as the colour of the object (d) less bright and blurred

vi. Cell wall is made up of

- (a) Plastic (b) Nucleus (c) Cellulose (d) Cytoplasm

Q3. Write true or false against the following statements. If false correct the first word only. [6]

- Filtration involves rotating solution at a very high speed to separate suspended solid particles in it.
- A shadow is formed on the opposite side of the light source.
- The underground water gets collected in ponds, puddles, streams, rivers.
- Domestic waste water contains harmful and toxic chemicals in it.
- Pin-hole camera forms an inverted image.
- Moon is the main source of light on the Earth.

Q4. Give scientific term for the following: [10]

- Type of organism which can be seen only with the help of microscope.
- Selectively allows things to get in and out of the cell.
- Lack of water in the human body.
- Water fit for drinking purpose.
- Purest form of natural water.
- The part of the cell that contains chromosomes.
- The liquid collected after filtration.
- Colourless plastid.
- Trees develop cones with seed in them.
- Cell consists of thick fluid.

Q5. Name the best method which can be used to separate the components of the following mixtures: [6]

- a. Sand and Water
- b. Iron and stones
- c. Husk and wheat grains
- d. Pulses and rice flour
- e. Suspended fruit pulp and seeds
- f. Milk and cream

Q6. Give scientific reason for the following statements. [5]

- a. Desert plants have their leaves modified as spines.
- b. Milk is considered as a mixture.
- c. Lotus has waxy coating on its leaves.
- d. Solar eclipse should not be watched directly.
- e. The trees on mountains of cold climate have long needle shaped leaves.

Q7. Differentiate between the following pairs (one point each) with the help of the clue given within the brackets. Draw columns. [6]

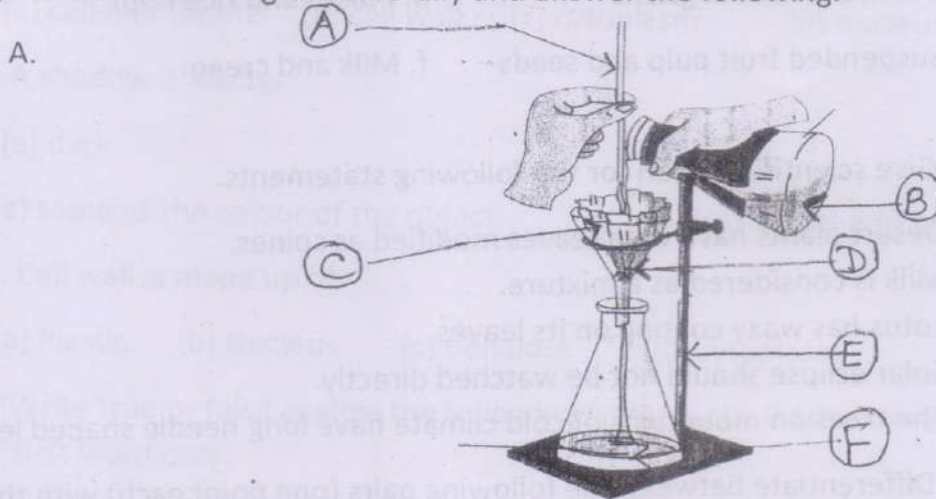
- a. Umbra and Penumbra(definition)
- b. Solar eclipse and Lunar eclipse(occurrence)
- c. Solute and Solvent(definition)
- d. Evaporation and Distillation(components obtained)
- e. Unicellular and Multicellular organism(number of cells)
- f. Animal cell and Plant cell(Plastids)

Q8. Answer the following.

- a. What is focal length of the pinhole camera? [1]
- b. What is meant by rectilinear propagation of light? [1]
- c. Name any four constituents of air. [2]
- d. State the two effects on the image formed in the pinhole camera if - the focal length is increased. [2]
- e. Write any two adaptations of birds for aerial habitat? [2]
- f. What is an eclipse? Name the two kinds of eclipse? [3]
- g. What is water pollution? Discuss two man made causes of water pollution. [3]

- h. What do you mean by water-borne diseases? Name any two water borne diseases. [3]

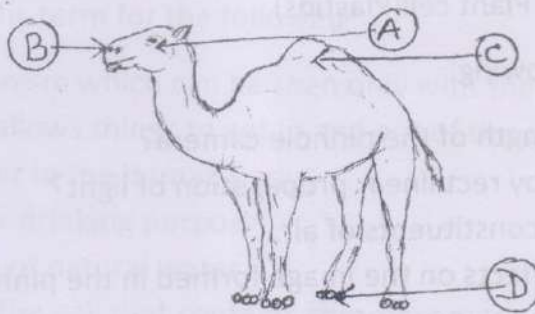
Q9. Observe the diagram carefully and answer the following.



- Label parts A, B, C, D, E, F [3]
- Identify and define the above process. [2]
- Name the insoluble component collected in the filter paper. [1]
- Why A is used? [1]

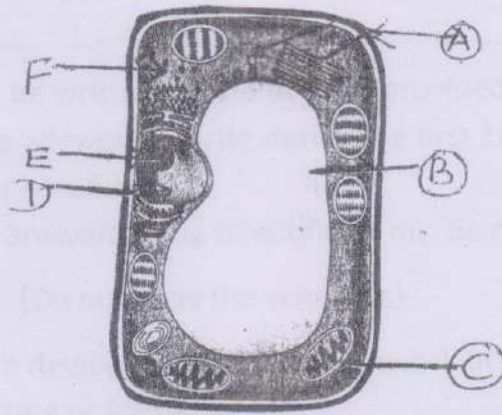
B. Look at the given picture and answer the following questions:

- Label the parts A, B [1]



- Which part protects the eyes of a camel from sand? [1]
- One function of labelled part D. [1]
- What does the part labelled C stores? [1]
- How does the long legs help the camel? [1]

C. Observe the diagram and answer the questions that follow:



- Identify the cell shown. [1]
- Give two reasons for your identification. [2]
- Label the parts A,B,C,D,E,F [3]
- Give an example of the organism that contains this type of cell. [1]