

**Greenlawns High School**

**Final Examination 2024**

**Subject: Biology**

**Std: IX C**

**Date: 21/02/2024**

**Time: 2 Hours**

**Marks: 80**

- Answers to this Paper must be written on the paper provided separately.
- You will not be allowed to write during first 15 minutes.
- This time is to be spent in reading the question paper.
- The time given at the head of this Paper is the time allowed for writing the answers.
- Section A is compulsory. Attempt any four questions from Section B.

**SECTION A**

**(Attempt all questions from this Section.)**

**Q.1 Choose the correct answers to the questions from the given options:(15)**

i) TAB vaccine is for \_\_\_\_\_.

- a) Tetanus            b) Tuberculosis            c) Typhoid            d) Diphtheria

ii) Which of the following statement is not true for the air which is exhaled during respiration?

- a) It contains more oxygen.            b) It contains more carbon-dioxide.  
c) It contains more water vapour.            d) It is warmer.

iii) Which of the following is very common in children and young adults?

- a) Hepatitis A            b) Hepatitis B            c) Hepatitis C            d) Hepatitis D

iv) Amoebiasis is caused by \_\_\_\_\_.

- a) *Amoeba proteus*            b) *Amoeba gorgonian*  
c) *Entamoeba histolytica*            d) *Amoeba agilis*

v) Sulphadiazine is a \_\_\_\_\_ drug.

- a) Sulphide            b) Sulphate            c) Sulphite            d) Sulphonamide

vi) Which of the following is not a function of skin?

- a) Prevents excessive loss of water            b) Synthesis of Vitamin B.  
c) Prevents entry of disease causing germs            d) Temperature regulation.



**B) Fill in the blanks: (5)**

- i) The first antibiotic discovered by Alexander Fleming was named as \_\_\_\_\_.
- ii) \_\_\_\_\_ is a very effective antibiotic in treating typhoid.
- iii) \_\_\_\_\_ fluid is found in between the membranous covering of the lungs.
- iv) Rising of dough during bread making, is called as \_\_\_\_\_.
- v) \_\_\_\_\_ tissue is found at all growing points of a plant.

**C) State whether true or false, if false correct the underlined word: (5)**

- i) HIV has DNA as its genetic material.
- ii) Cellular respiration means chemical changes occurring inside the cell.
- iii) Tuberculosis is a viral disease.
- iv) Acquired immunity is by virtue of genetic constitutional make-up.
- v) Most of the bacteria are heterotrophic.

**D) Match the column: (Write the correct pair eg. i-a) (5)**

Column A	Column B
i) Mammary glands	a) Give out oily secretion to keep the skin oily and waterproof.
ii) Meibomian glands	b) Helps in perspiration.
iii) Ceruminous glands	c) Secretes milk in females.
iv) Sweat glands	d) Secretes wax like substance to protect eardrum.
v) Sebaceous gland	e) Secretes tears.
	f) Secretes oily substance which lubricates the margins of the eye-lids

**E) Choose the odd one out from the following terms and name the category to which other belongs: (5)**

- i) Colour-blindness, Diabetes, Malaria, Beri-beri.
- ii) Salting, Curdling of milk, Processing of curd, Curing, Ripening.
- iii) Tears, Nasal secretion, Hair, Sweat, Saliva.
- iv) Whooping cough, Pneumonia, Tuberculosis, Chicken pox.
- v) Sieve tubes, Companion cells, Tracheids, Phloem Parenchyma.

## SECTION B

(Attempt any 4 questions from this Section.)

**Question 3:** (10)

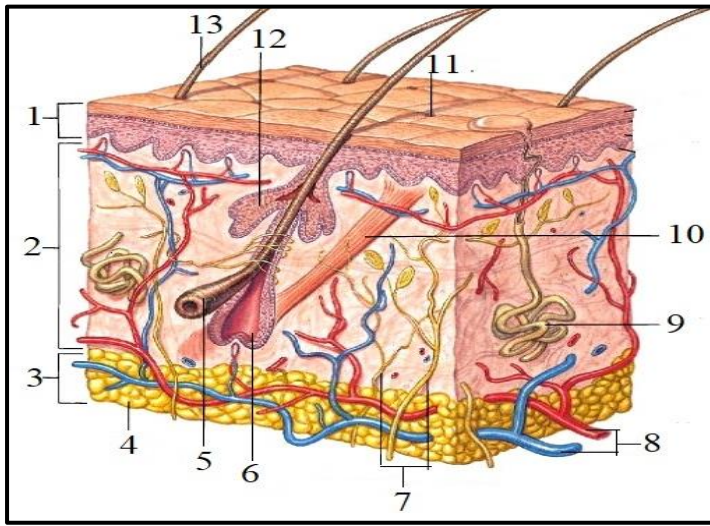
- i) Define: Antibiotics. (1)
- ii) Write the reaction of anaerobic respiration in animals. In which animal cells anaerobic respiration take place? (2)
- iii) What is antiseptic? Write two examples of antiseptic. (2)
- iv) What is the causative agent of Ascariasis? How does it spread? (2)
- v) Explain any three characteristics of Antibodies. (3)

**Question 4:** (10)

- i) What is cell wall of bacteria made of? (1)
- ii) What is toxoid? How is it made? (2)
- iii) Differentiate between Malaria and Filariasis based on their causative agent and vectors. (2)
- iv) What is Vasoconstriction? How does it affect sweating? (2)
- v) Explain any three methods of transmission of HIV virus. (3)

**Question 5:** (10)

- i) What do you mean by incubation period? (1)
- ii) Name the disease caused by Tapeworm. Why does patient become terribly weak in this disease? (2)
- iii) Give reason : Respiration rate is higher in animals than in plants. (2)
- iv) Differentiate between Active and Passive immunity. (2 Points) (2)
- v) Study the following Structure of human skin and answer the questions that follow: (3)



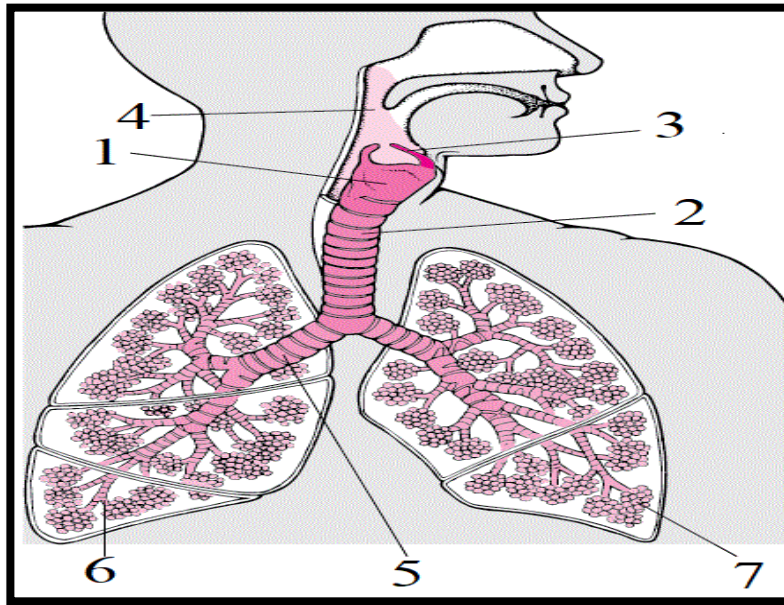
- i) Label parts 6 and 13.
- ii) What is the function of 4?
- iii) What is the function of 7?

**Question 6:** **(10)**

- i) Differentiate between Leucoderma and Albinism. (1 point) (1)
- ii) Explain – Spore formation in bacteria is a method of escaping unfavorable conditions. (2)
- iii) State the location and function of Areolar tissue. (2)
- iv) Describe the structure of Nerve cell. (2)
- v) Draw a neat labelled diagram of Bacterial cell. (Label any 4 parts). (3)

**Question 7:** **(10)**

- i) Write any one serum compound produced by genetically modified bacteria. (1)
- ii) How pimples are different from Acne? (2)
- iii) Explain the method of pasteurization as a food preservation method. (2)
- iv) Which muscles are involved in formation of ‘goose flesh’ in human skin?  
Name the protein present in hair and nails. (2)
- v) The following diagram represents human respiratory system. Study the diagram and answer the question that follow. (3)



- a) Label and name the part where gaseous exchange take place.
- b) In which part vocal cords are present?
- c) Label and Name the parts where C-shaped rings of cartilage are present.

**Question 8:** **(10)**

- i) Define: Residual volume. (1)
- ii) What is respiratory cycle? Name the muscles involved in respiratory cycle. (2)
- iii) Define: Fermentation. Which micro-organism is used for making wine? (2)
- iv) What is lymph? State its function. (2)
- v) Write the function of the following: (3)
  - a) Squamous epithelium.
  - b) Cilliated columnar epithelium.
  - c) Glandular epithelium