

GREENLAWNS HIGH SCHOOL

STD-VI

DIV-A,B,C SUBJECT-MATHS

MARKS-80

DATE-13-02-25

FINAL EXAMINATION

DURATION-2 HOURS

NOTE:

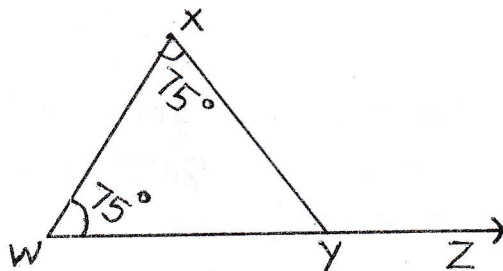
Do not copy questions.

Write correct question number to the respective answer.

Q1] MULTIPLE CHOICE QUESTIONS:

[10]

- 1) The mean of first 7 odd numbers is _____
a) 5 b) 7 c) 8 d) 1
- 2) If area of a rectangle is 250 m^2 and breadth is 25 m then length is _____ m.
a) 10 b) 250 c) 625 d) 275
- 3) In ΔPQR , if $\angle P = 75^\circ$, $\angle Q = 45^\circ$, then $\angle R$ is _____
a) 65° b) 55° c) 60° d) 75°
- 4) A bus covers 42 km in 3 hours. The speed of a bus is _____
a) 50.4 km/hr b) 3.6 km/hr c) 42 km/hr d) 14 km/hr
- 5) The number of boys and girls in a school are 78 and 32. Hence the ratio of boys: girls is _____
a) 16:39 b) 39:16 c) 78: 32 d) 32:78
- 6) In the given figure, $\angle XYZ$ is an exterior angle of ΔXYW . The measure of $\angle XYZ$ is _____



- a) 75° b) 50° c) 150° d) 100°
- 7) A dog runs around a ground covers a distance of 16 km with the speed of 4 km/hr so the time required is _____
a) 4 hrs b) 64 hrs c) 8 hrs d) 2 hrs
 - 8) The ratio of 9 months to 15 months is _____
a) 5:3 b) 3:5 c) 3:2 d) 3:15
 - 9) The perimeter of a regular pentagon with side 34 cm is _____
a) 1156 cm b) 170 cm c) 204 cm d) 70 cm
 - 10) The mean of 3,4,5,7,8,9, is _____
a) 2 b) 29 c) 6.2 d) 6

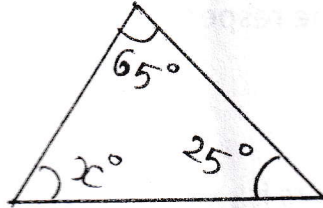
Q2]

[20]

- 1) Express the following ratios in its simplest form.

0.6 kg : 280 g

- 2) A car travelled a distance of 32 km in 3 hours and 12 mins. Find its speed in km/hr.
- 3) From the given figure below find the value of x .



- 4) If the perimeter of a square is 1208 cm. Find its side.
- 5) The mean of 16, 26, 12, x and 42 is 154. Find the value of x .
- 6) Is the ratio of 75g and 185 g same as the ratio of 45 cm to 111 cm?
- 7) A train covers a distance of 343 km in 7 hours. Find
(i) Speed (ii) Distance covered by the train in 7.3 hours.
- 8) One angle of a right angled triangle is 35° . Find the other angle.
- 9) Find the perimeter of a rectangle whose length = 12.8 m and breadth = 350 cm.
- 10) Find the median of 2.3, 4.2, 6.6, 3.9, 5.4 and 1.5

Q3]

- 1) An aeroplane covered 3750 km in 2 hours 5 mins. Find its speed in m/s. [3]
- 2) The ratio of men to women in a village is 5 : 7. If there are 545 men in the village, find the number of women. [3]
- 3) A square card has each side 35 m whereas a rectangular card has length = 25 m and breadth = 20 m, which of the two cards has a greater perimeter and by how much? [4]

Q4]

- 1) If the angles of the triangle are $3x$, $5x$, $7x$. find each angle of the triangle. [3]
- 2) The mean of 5, 3, 2, 7, 8, $x+1$ is 36. Find x . [3]
- 3) A man starts jogging and covers a distance of 3 km in 2 hours. He continues jogging and goes to a shop covering a distance of 7 km in 3 hours, he then goes to a friend's place which is 4 km away in 4 hours. Find his average speed in the [4]

Q5]

- 1) The monthly salary of a person is ₹ 93000 and his monthly expenditure is ₹27000. Find the ratio of his: [3]
 - a) Salary to expenditure.
 - b) Saving to salary.
- 2) A rectangular lawn has length = 220 m and breadth= 130 m. find: [3]
 - a) The length of the fence required to enclose the lawn.
 - b) The cost of fencing the lawn at the rate of ₹68 per m.
 - c) The area of the rectangle.
- 3) (i) Find the median of : 19,5,8,10,12,16,15. [4]
(ii) If the mean of x , $x+1$, $x+2$ and $x+3$ is 26. Find x .

Q6]

- 1) A fish swims 450 m in the water and returns back to the starting point in 5 mins. Find the speed of the fish in m/s and km/hr. [3]
- 2) In $\triangle XYZ$ if $\angle X = \angle Y = \angle Z$ then find all three angles. [3]
- 3) Divide 153 in the ratio $3\frac{1}{3} = 2\frac{2}{3}$ [4]

Q7]

- 1) The weekly expenses of Pramila have decreased from ₹ 2500 to ₹ 1750. [3]
Find the ratio of the following:
 - a) Decrease in expenses to original expenses.
 - b) Original expenses to decreased expenses.
- 2) Bunty covers a certain distance in 8 hours at a speed of 64 km/hr. [3]
 - a) Find the time taken by Babli to cover the same distance at a speed of 4 km/hr.
 - b) Find the speed of John if he takes 5 hours to complete the same distance.
- 3) Each side of a square is 42 cm and a rectangle has length 75 cm. If the [4]
perimeters of both (square & rectangle) are same find the breadth of the rectangle.

_____ALL THE BEST_____