

GREENLAWNS HIGH SCHOOL  
TERMINAL EXAMINATION 2025

SCIENCE

STD : 6 A,B,C

MARKS : 80

TIME : 2 HRS

NOTE : ALL THE ANSWERS TO BE WRITTEN IN THE ANSWER BOOKLET.

Q.I) A. MULTIPLE CHOICE QUESTIONS : (10 MARKS)

- 1) The process by which a substance change from liquid state to vapour state is called \_\_\_\_\_
  - a. Condensation
  - b. Evaporation
  - c. Sublimation
  - d. Freezing
- 2) Solubility \_\_\_\_\_ if the solute is either solid or liquid.
  - a. Increases
  - b. Decreases
  - c. Disappears
  - d. None of the above
- 3) i) \_\_\_\_\_ + Nitric Acid  $\rightarrow$  ii) \_\_\_\_\_ + water + Carbon dioxide
  - a. i) Calcium, ii) Nitrate
  - b. i) Calcium carbonate, ii) Calcium nitrate
  - c. i) Calcium nitrate, ii) Calcium carbonate
  - d. i) Nitrate, ii) Carbonate

4) Fast air is known as \_\_\_\_\_

- a. Breeze
- b. Storm
- c. Wind
- d. Thunder

5) CNG stands for \_\_\_\_\_

- a. Common Natural Gas
- b. Cobalt Natural Gas
- c. Compact Natural Gas
- d. Compressed Natural Gas

6) Which is not an example of compound leaves ? \_\_\_\_\_

- a. Mango
- b. Rose
- c. Neem
- d. Pea

7) Peepal is an example of \_\_\_\_\_

- a. Simple Leaves and Parallel Venation
- b. Compound Leaves and Parallel Venation
- c. Simple Leaves and Reticulate Venation
- d. Compound Leaves and Reticulate Venation

8) \_\_\_\_\_ is a green flat and broad part of the leaf.

- a. Leaf base
- b. Leaf blade
- c. Leaf stalk

d. Leaf margin

9) Another name for larynx is \_\_\_\_\_

a. Pharynx

b. Mouth

c. Buccal cavity

d. Voice box or adam's apple

10) \_\_\_\_\_ closes the trachea when we swallow food.

a. Epiglottis

b. Diaphragm

c. Trachea

d. Larynx

Q.2) A. Name the following :

a. The process of solid vaporizing without melting (1 MARK)

b. The two inert gas used in photography (2 MARKS)

c. Any 2 Greenhouse Gases (2 MARKS)

B. Define (5 MARKS)

a) Fusion

b) Aqueous Solution

c) Global warming

d) Digestion

e) Venation

C. Match the following : (6 MARKS)

1. Water suitable for drinking

2. Sprout - leaf plant

3. The entire set of leaves of a plant

4. Elephant - ear plant

5. Midrib gives out numerous fine branches

6. Growing on or attached to the leaf of another plant

a. Bryophyllum

b. Foliage

c. Begonia

d. veins

e. Epiphyllous

f. potable water

D. Differentiate between :

a. Saturated Solution and Unsaturated Solution (1 point each)

(w.r.t definition) (1 MARK)

b. Solute and Solvent (1 point each)(w.r.t definition) (1 MARK)

~~Q.2.~~ Respiration and Burning (2 points each) (2 MARKS)

Q.3) A. Write the properties of solids, liquids and gases on the basis of the following points. Make the same table in your answer sheet while writing the answer.

a. (3 MARKS)

PROPERTY	SOLIDS	LIQUIDS
FLUIDITY		
SHAPE		
COMPRESSIBILITY		

b. (2 MARKS)

PROPERTY	SOLIDS	GASES
Intermolecular force / COHESION		
INTERMOLECULAR SPACE		

B. Write short note on :

10  
(8 MARKS)

a. Reticulate Venation

(b) ~~Bronchi~~ <sup>write</sup> Any 4 symptoms of indigestion (4)

c. Compound leaves

d. Uses of carbon dioxide (any 4)

C. Give Reasons :

(4 MARKS)

a. Gases have maximum compressibility

b. Water is called a universal solvent



c. Saline water is not fit for drinking

d. Argon is used in electric bulb

D. Write any 3 properties of air (3 MARKS)

Q.4 ) Answer the following :

A. Write the chemical equation of photosynthesis (2 MARKS)

~~B.~~ What are the similarities between respiration and burning (2 points) (2 MARKS)

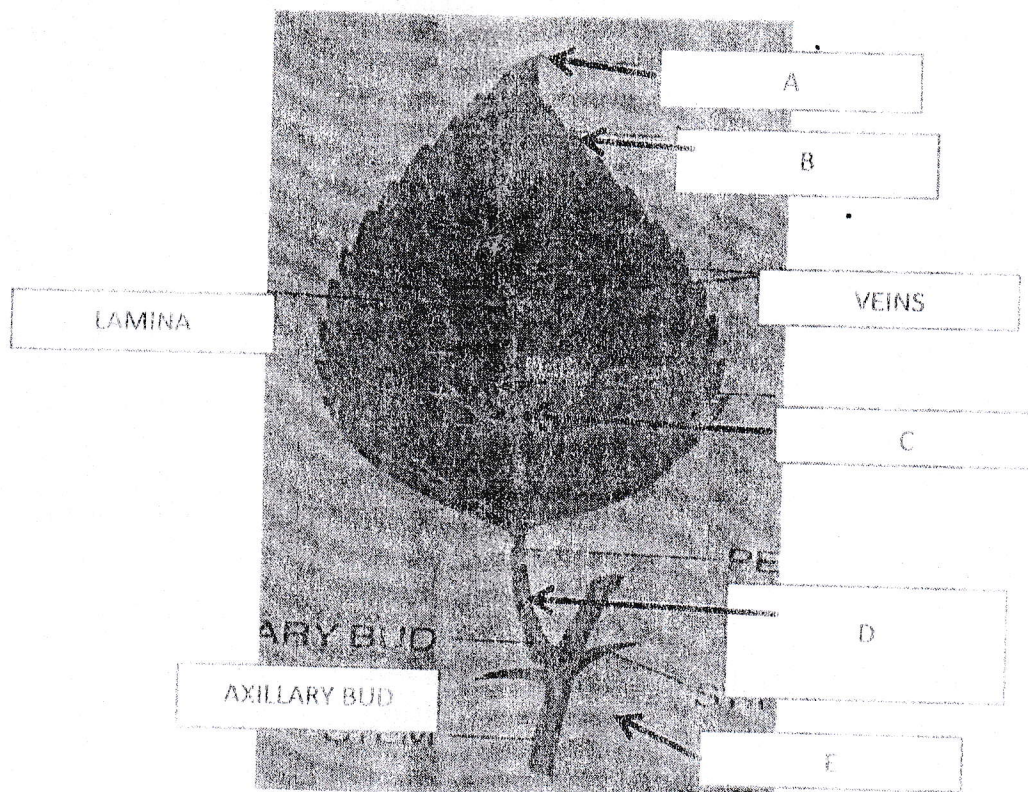
C. What are 2 main dissolved impurities in river water (2 MARKS)

D. Write 2 uses of water vapour (2 MARKS)

E. List the physical properties of water (3 MARKS)

F. Name the 4 steps of purification of water (4 MARKS)

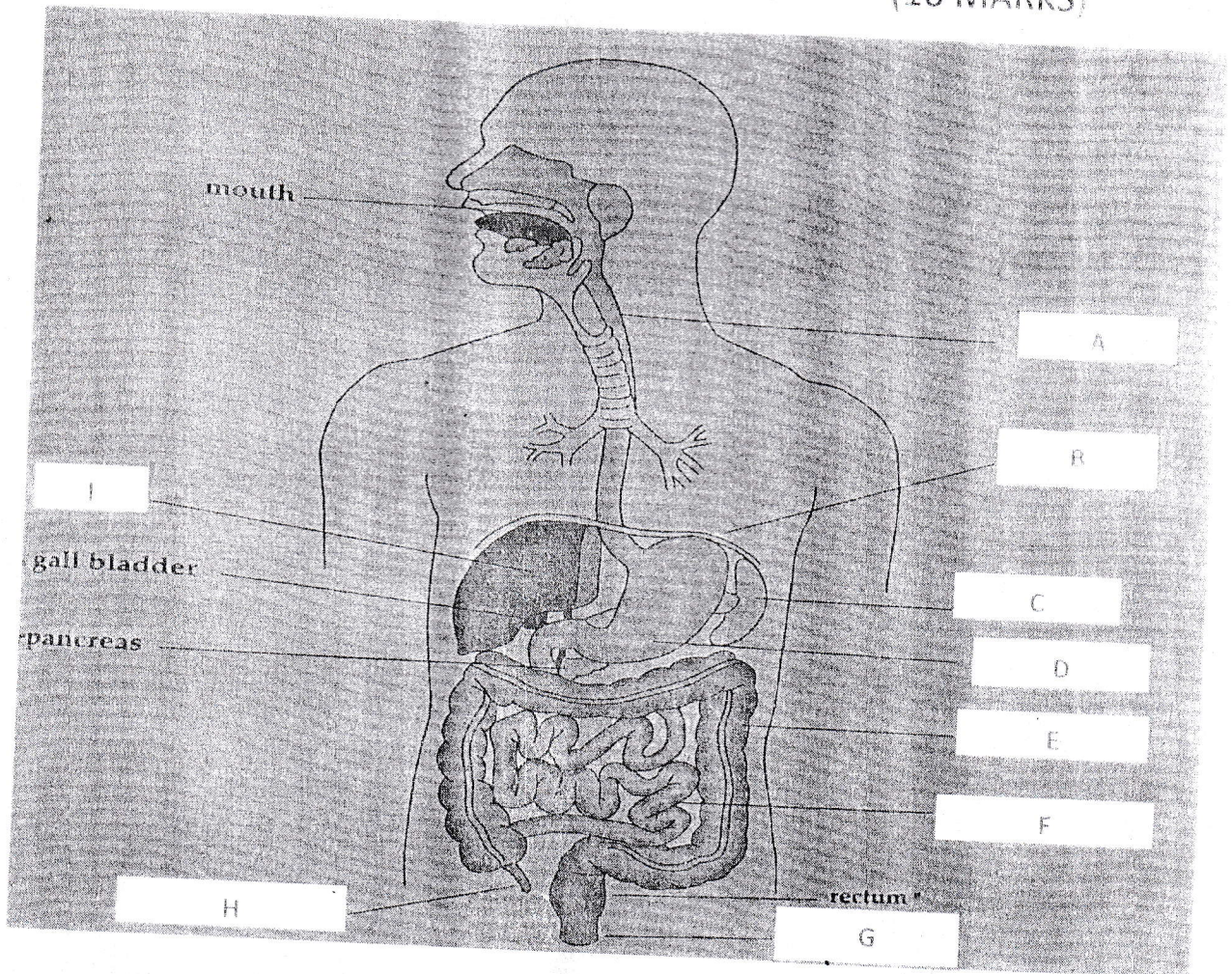
Q.4) LABEL THE DIFFERENT PARTS OF A LEAF (A,B,C,D,E) (5 MARKS)





Q.5) QUESTIONS BASED ON THE DIAGRAM :

(10 MARKS)



a. Name the organ system

(1 MARK)

b) Name A, B, C, D, E, ~~F~~

6 (1 MARKS)

c. ~~This closes the trachea when we swallow food~~

(1 MARK)

d. What is the use of part I

(1 MARK)

e. Which juice is secreted by part D

(1 MARK)

f. What is the function of part G

(1 MARK)

~~g. Which enzyme is secreted by part ~~DD~~~~ (1 m)

@@@@@@@@@@@@@@@@ALL THE BEST@@@@@@@@@@@@

~~Q4P~~ State any 4 symptoms of