

Greenlawns High School
Terminal Examination 2025
Subject: Biology

Std: VIII

Date: 30/09/2024

Time: 2 Hours

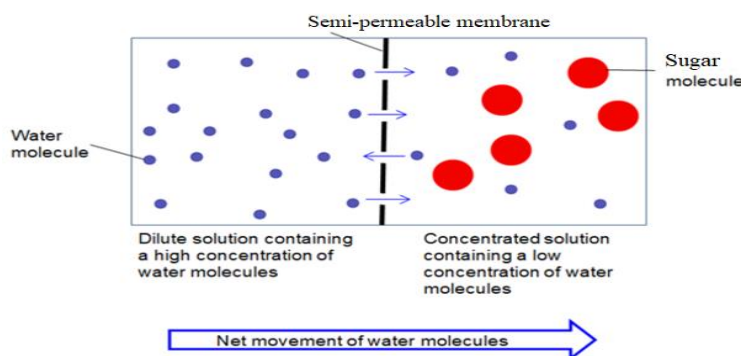
Marks: 80

- Answers to this Paper must be written on the paper provided separately.
- You will not be allowed to write during first 10 minutes.
- This time is to be spent in reading the question paper.
- The time given at the head of this Paper is the time allowed for writing the answers.

SECTION A

Q.1 Choose the correct answers to the questions from the given options:(15)
(Write the correct option and the corresponding answer)

i) Identify the process depicted in the following picture.



a) Diffusion b) Osmosis c) Active transport d) Passive transport

ii) If the xylem vessels of a plant are plugged or removed:

a) The plant will get infected b) The plant cannot transport food
c) The plant will wilt (Shrivel) d) The plant will continue to grow

iii) Assertion (A): Root hair zone is the region of water absorption.

Reason (R) : Root hair cells have vacuole which contains a low concentration of cell sap in it.

a) A is True, R is True. b) A is False, R is False.
c) A is True, R is False. d) A is false, R is True.

iv) What is a rhizome?

a) A type of a root that grows above ground.
b) A type of a stem that grows underground.
c) A type of a leaf that grows under water.
d) A type of a flower that grows on tree.

v) What happens immediately after the fertilization in plants?

- a) The flower drops off
- b) The seed germinates
- c) The pollen tube grows
- d) The ovule develops into a seed

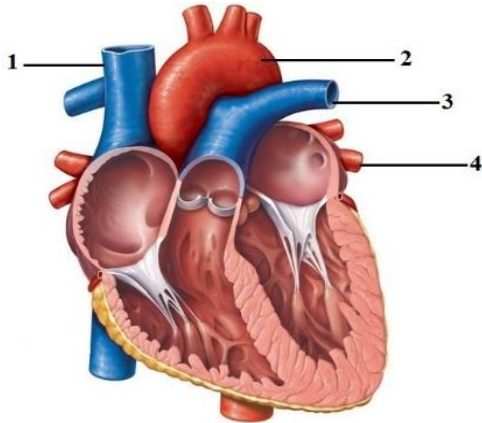
vi) Each level in food chain is called as _____.

- a) Trophic level
- b) Tropic level
- c) Tropical level
- d) Torphic level

vii) The Cuscuta vine wrapped around the plant is an example of _____

- a) Predation
- b) Parasitism
- c) Mutualism
- d) Symbiosis

viii) Choose the correct labels for the following diagram-



- a) 1- Inferior Vena Cava, 2-Aorta, 3- Pulmonary vein, 4- Pulmonary artery.
- b) 1- Superior Vena Cava, 2- Aorta, 3- Pulmonary artery, 4- Pulmonary vein.
- c) 1- Inferior Vena Cava, 2- Pulmonary artery, 3- Pulmonary vein, 4- Aorta.
- d) 1- Superior Vena Cava, 2 Pulmonary vein -, 3- Pulmonary artery, 4- Aorta.

ix) Blood platelets are also called as _____.

- a) Leucocytes
- b) Osteocytes
- c) Erythrocytes
- d) Thrombocytes

x) Which cells protects our body from any disease or infections?

- a) Leucocytes
- b) Osteocytes
- c) Erythrocytes
- d) Thrombocytes

xi) Which part of the double circulation system is responsible for oxygenating the blood?

- a) Systemic circulation
- b) Pulmonary circulation
- c) Both circulations
- d) Systematic circulation

xii) Which of the following diseases is not caused by Helminths?

- a) Amoebiasis
- b) Taeniasis
- c) Ascariasis
- d) Filariasis

xiii) Which one of the following is a communicable disease?

- a) Diabetes
- b) Heart Attack
- c) Cancer
- d) Influenza

xiv) Malaria can be prevented by _____

- a) Keeping our food covered b) Drinking boiled water
c) Not allowing water to stagnate c) Wearing clean clothes

xv) Which of the following is not a narcotic drug?

- a) Cocaine b) Heroin c) Paracetamol d) Morphine

Q.2

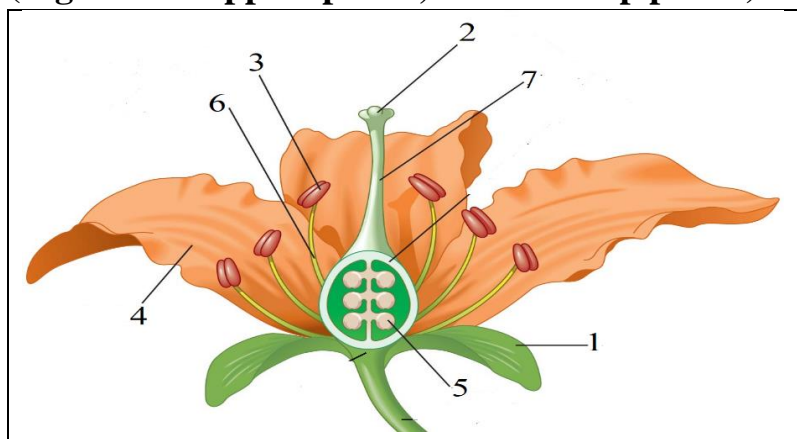
A) Choose the Odd one out. State the category to which others belong. (5)

- i) Polio, Measles, Diphtheria, Mumps.
- ii) Small fishes, Lizard, Frog, Fungi.
- iii) Nitrogen, Phosphorus, Manganese, Potassium.
- iv) Tracheids, Tracheae, Sieve tubes, Wood fibres.
- v) Erythrocytes, Leucocytes, Plasma, Thrombocytes.

B) Given below is a diagram of structure of bi-sexual flower. Match the labelled structures with their correct function. Do not label the structures.

(E.g. 6 – to support part 3, 7- to hold up part 2)

(5)

	a. Contains male gametes
	b. Contains female gametes
	c. Receive pollen grains
	d. Attract insects for pollination
	e. Protects flower in bud condition.

C) State whether true or false, if false correct the underlined word and (5) rewrite the statement:

- i) Athlete's foot is a bacterial disease.
- ii) Nitrogen is made available to plants by certain bacteria and through action of lightning.
- iii) Tobacco contains caffeine which makes it addictive.
- iv) Water molecules are pulled up in plants due to their tendency of remaining joined called cohesion.
- v) The alcohol used in alcoholic drinks is Methanol.

D) Fill in the blanks. (5)

The circulation of blood is initiated by the heart which lies in between the i) _____. It is enclosed in a double membrane called ii) _____. The two anterior chambers which receive blood are called as iii) _____. The contraction phase of heart chambers is known as iv) _____. The beating of the heart is controlled by the v) _____.

E) Differentiate between the following based on the points given in the brackets. (5)

- i) Exosmosis and Endosmosis (Meaning)
- ii) Malaria and Chikungunya. (Name of the vector)
- iii) Primary Consumer and Secondary Consumer. (Meaning)
- iv) Diffusion and Active transport. (Definition)
- v) Antigen and Antibody (Meaning)

SECTION B

Q.3 Answer the following: (10)

- i) What is chlorosis? (1)
- ii) Write the functions of the following: (2)
 - a) Phloem Parenchyma
 - b) Phloem fibres
- iii) We often read the following warnings. Explain the scientific reasons behind these warnings. (2)
 - a) "Do not drink and drive"
 - b) "Smoking is injurious to health"
- iv) How does permeable membrane differ from semi-permeable membrane? Write one example of each. (2)
- v) a) Write the name of the virus causing measles? (3)
 - b) How does measles virus spread?
 - c) What is the incubation period of this virus?

Q.4 Answer the following: (10)

- i) Define : Food chain. (1)
- ii) Explain the two main steps of artificial pollination. (2)
- iii) Copy and Complete the following food chains- (2)
 - a) Grass → _____ → Frog → _____ → Eagle.
 - b) _____ → Rabbit → _____ → Lion
- iv) State the location of the following: (2)
 - a) Tricuspid valve
 - b) Pulmonary Semilunar valve

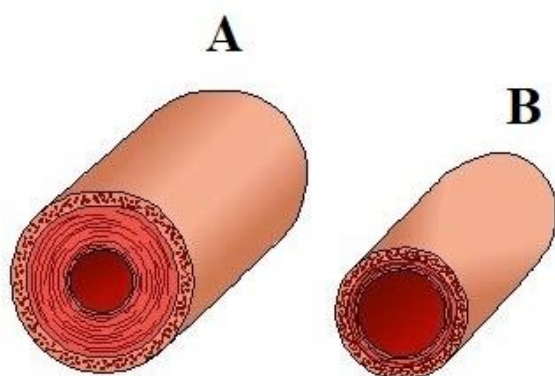
v) Copy and complete the following table. (3)

Blood group	Antigen on Red Blood cells	Antibody in Plasma	Donate to	Receive from
A			A and AB	
AB				All blood groups

Q.5 Answer the following: (10)

i) What do you mean by Cardiac arrest? (1)

ii) The following picture shows a section of two blood vessels. Study the picture and answer the questions that follow: (2)

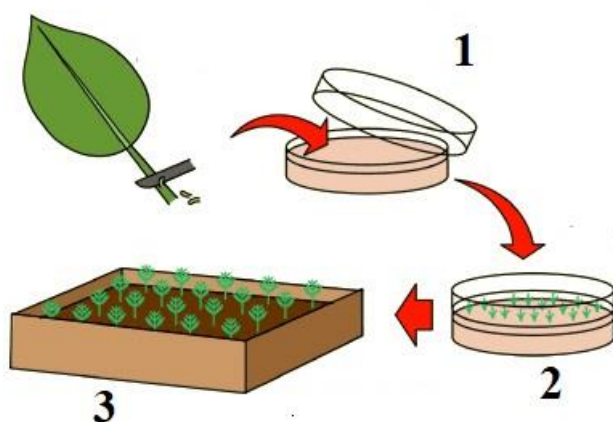


- a) Which of these blood vessels carry blood away from the heart (A or B)?
What are the small branches of these blood vessels are called?
- b) Which of these blood vessels have valve (A or B)? What is the function of these valve?

iii) Explain any two functions of Lymph (2)

iv) Explain one example of symbiosis. (2)

v) Artificial method of vegetative propagation is shown in the following picture, Study the picture and answer the question that follow: (3)



- a) Label stages 1 and 2.
- b) Which plant tissues are used for this method?
- c) Write one advantage of this method.

Q.6 Answer the following:

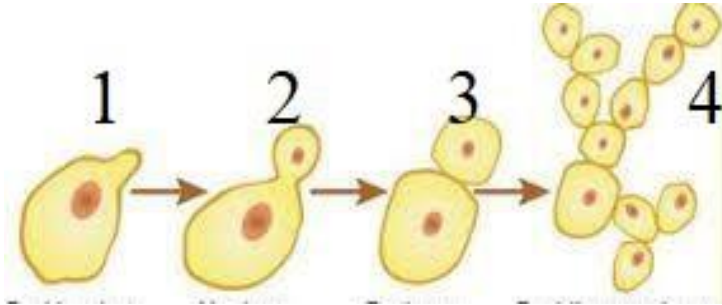
(10)

i) Define: Immunisation.

(1)

ii) The following picture depicts type of asexual reproduction. Study the picture and answer the questions that follow:

(2)



a) Name the process.

b) Name two organisms which reproduce using this method.

iii) Write the full form of following vaccines-

(2)

a) DPT

b) BCG

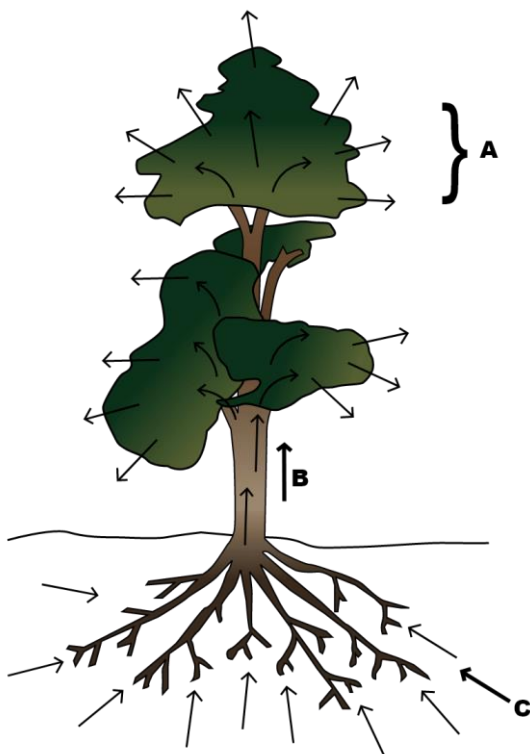
iv) a) Drug addicts often get infected with AIDS- Give reason.

(2)

c) What are “withdrawal symptoms”?

v) The following picture depicts the physiological process of plants. Study the picture and answer the question that follow:

(3)



a) Define the process A.

b) How does sunlight affect this process?

c) Name any two forces which help in process B.