

Greenlawns High School
Terminal Examination 2025-26
Subject: Biology

Std: IX C

Date: 07/10/2024

Time: 2 Hours

Marks: 80

- Answers to this Paper must be written on the paper provided separately.
- You will not be allowed to write during first 10 minutes.
- This time is to be spent in reading the question paper.
- The time given at the head of this Paper is the time allowed for writing the answers.
- Section A is compulsory. Attempt any four questions from Section B.

SECTION A

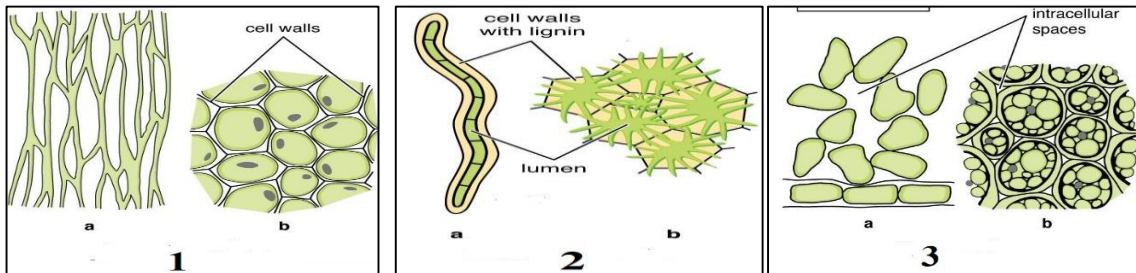
(Attempt all questions from this Section.)

Q.1 Choose the correct answers to the questions from the given options:(15)
(Write the correct option and the corresponding answer)

i) Which of the following cell organelles is involved in the formation of the acrosome of a sperm?

a) Centrosome b) Lysosome c) Dictyosome d) Golgi apparatus

ii) The following pictures shows three types of permanent tissues in plants, a – longitudinal section, b- Cross section. Choose the correct labels for these tissue.

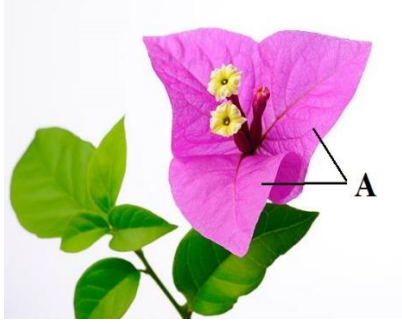


- a) 1- Parenchyma, 2- Collenchyma, 3- Sclerenchyma
b) 1- Sclerenchyma, 2- Parenchyma, 3- Collenchyma
c) 1- Collenchyma, 2- Sclerenchyma, 3- Parenchyma
d) 1-Parenchyma, 2- Sclerenchyma,3- Collenchyma

iii) Which of the following muscles are voluntary muscles?

- a) Striated muscles
b) Unstriated muscles
c) Cardiac muscles
d) Smooth muscles

iv) The following is a picture of a Bougainvillea, Label the part A.



- a) Petals b) Leaves c) Bracts d) Sepals

v) Pollination by wind is termed as _____.

- a) Hydrophily b) Anemophily c) Entomophily d) Ornithophily

vi) What is seed dormancy?

- a) A state of active growth b) A state of temporary cessation of growth
c) A state of permanent damage d) A state of germination

vii) Which of the following is the characteristic of Exalbuminous seeds?

- a) They have thin cotyledon and endosperm
b) They have thick cotyledon and small amount or no endosperm.
c) They have large embryo.
d) They have hard seed coat.

viii) A six-years old boy has very weak and soft bones. He must be having deficiency of which vitamin?

- a) Vitamin A b) Vitamin B c) Vitamin C d) Vitamin D

ix) A person has trouble biting into an apple with his front teeth. Which type of teeth is most likely responsible for this problem?

- a) Incisors b) Canines c) Pre-molars d) Molars

x) Assertion (A): Cooked rice when chewed very well begins to taste sweet.

Reason (R): Enzyme ptyalin secreted in mouth converts starch into maltose.

- a) Both assertion and reason are true.
b) Assertion is true and reason is false.
c) Assertion is false but the reason is true.
d) Both assertion and reason are false.

xi) What is the function of synovial fluid in synovial joint?

- a) To produce structural support b) To produce bone cells
c) To kill germs d) To reduce friction between the bones.

xii) The external surface of bone is covered by a membrane called:

- a) Peritonium b) Pericardium c) Peristeum d) Perinium

xiii) *Wuchereria* is a _____.

- a) Virus b) Bacterium c) Nematode d) Protozoan

xiv) Tuberculosis spreads through _____.

- a) Contaminated Water b) Contaminated Food c) Mosquito bite d) Sputum

xv) Assertion (A): Viruses cause a variety of diseases in humans.

Reason (R): Viruses can replicate within host cells.

- a) Both A and R are true, and R is the correct explanation of A.
b) Both A and R are true, but R is not the correct explanation of A.
c) A is true, but R is false.
d) A is false, but R is true.

Q.2

A) Name the following:

(5)

- i) Tissue responsible for increase in the girth (diameter) of the stem.
ii) Non-green perianth.
iii) The condition in a flower when pollen grains cannot reach the stigma of the same flower.
iv) The part of the seed which elongates faster during Hypogeal germination.
v) The shoulder blade.

B) Fill in the blanks:

(5)

Nucleus is surrounded by nuclear membrane and it is filled with relatively dense

i) _____. It has thread like structures called ii) _____. During cell division these thread like structures become thick and ribbon-like forming iii) _____ which has hereditary units called iv) _____. These hereditary units are made up of complex chemical substance called v) _____.

C) State whether true or false, if false correct the underlined word and rewrite the statement:

(5)

- i) Areolar tissue has specialized cells which store fat.
ii) Pumpkin is a Dioecious plant.
iii) Germination of pollen grain is stimulated due to secretion of sugars by the stigma.
iv) Hepatitis B is transmitted through contaminated water.
v) Goitre is an Endemic disease.

D) Match the following. (Write the correct pair in words) (5)

Column A (Minerals)	Column B (Chief Function)
i) Iodine	a) Required for clotting of blood
ii) Calcium	b) Secretion of neurotransmitter (acetylcholine)
iii) Iron	c) Synthesis of ATP
iv) Potassium	d) Component of thyroxine hormone
v) Phosphorus	e) Synthesis of haemoglobin
	f) Regulates acid-base equilibrium

E) Choose the odd one out from the following terms and name the category to which other belongs: (5)

- i) Stigma, Sepal, Style, Ovary.
- ii) Integuments, Micropyle, Tube nucleus, Nucellus.
- iii) Maize, Pea, Gram, Bean.
- iv) Humerus, Radius, Ulna, Tarsals.
- v) Cholera, Colour-blindness, Malaria, Dengue.

SECTION B

(Attempt any 4 questions from this Section.)

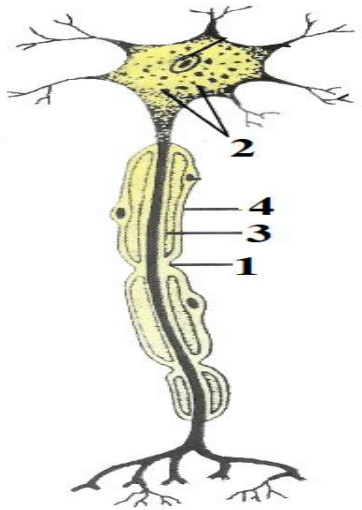
Q.3 Answer the following: (10)

- i) Differentiate between Epidermal tissue and Epithelial tissue based on their location. (1)
- ii) Which organs get primarily affected in the following diseases: (2)
 - a) Tuberculosis b) Cholera c) Hepatitis d) Filariasis
- iii) Study the following picture and answer the questions that follow: (2)



- a) Identify the type of sepals and Label part A.
- b) Write one example of a flower having brightly coloured sepals.
- iv) Write the specific location of the following bones in our body: (2)
 - a) Sternum
 - b) Malleus, Incus and stapes

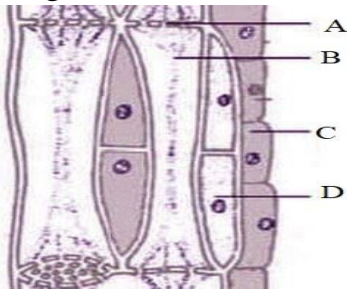
v) Study the following diagram and answer the questions that follow: (3)



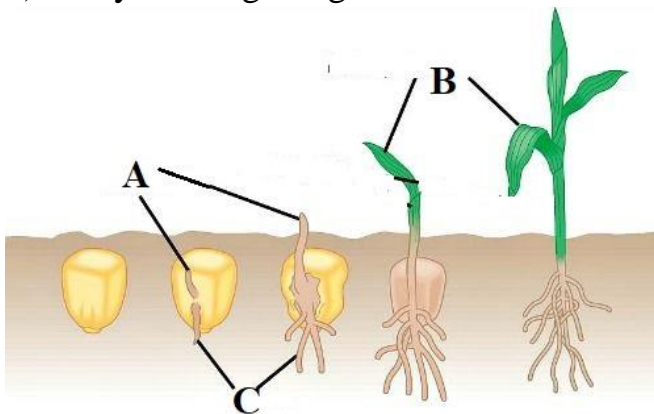
- Label the parts 1, 2, 3, 4.
- Why are these cells very long?

Q.4 Answer the following: (10)

- Define: Vivipary. (1)
- Differentiate between two types of supportive connective tissue. (2)
- The following picture shows longitudinal section of phloem. Study the diagram and answer the questions that follow: (2)



- Write the function of cells labelled as C.
 - Write the collective term for xylem and phloem.
- iv) Write any two functions of the following in our body: (2)
- Proteins
 - Roughage
- v) Study the diagram given below and then answer the question that follow: (3)



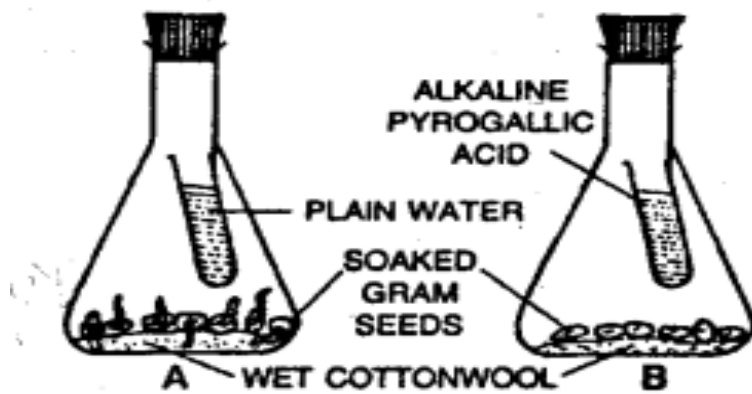
- Label the parts A and C.

- b) Identify the type germination.
- c) Name the protective sheath of part C.

Q.5 Answer the following:

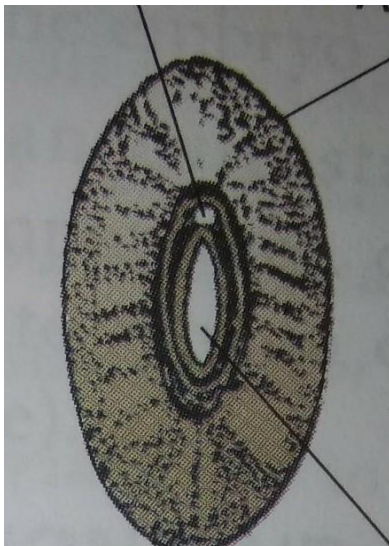
(10)

- i) Name any two enzymes present in pancreatic juice. (1)
- ii) Write any two characteristics of water pollinated flowers. (2)
- iii) The following picture shows an experiment based on germination. Study the picture and answer the questions that follow: (2)



- a) Why the seeds have not germinated in flask B?
- b) How does germination of the seed get affected if the surrounding temperature is very low?
- iv) The following picture shows external structure of a Bean seed. Write two functions of part labelled as B. (2)

B



- v) Draw a neat labelled diagram of the Microscopic structure of an intestinal villus. (Label any 4 parts). (3)

Q.6 Answer the following:

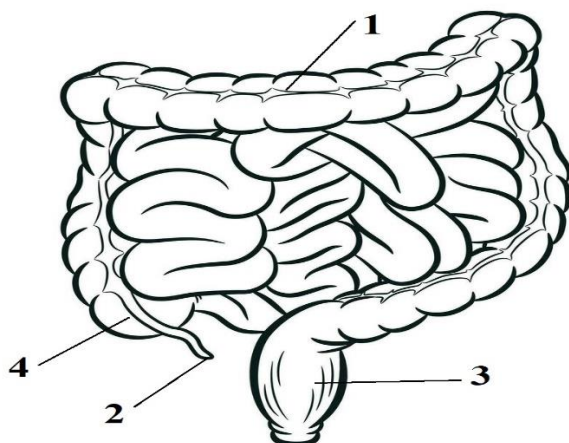
(10)

i) Give reason: In female skeleton, the pelvis bone is wider and trough shaped.

(1)

ii) The following picture shows diagram of human intestine. Label the parts marked as 1,2,3 and 4.

(2)

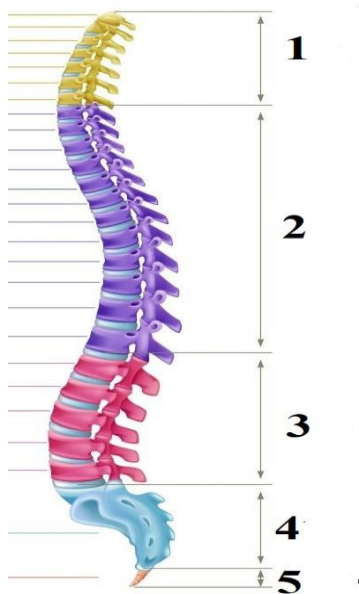


iii) Explain any two ways to control mosquitoes.

(2)

iv) The following picture shows side view of human vertebral column. Label the regions marked as 2,3 and 4. And write how many vertebrae are present in each region? Name the first vertebra in the first region.

(2)



v) Raj is having a very high fever and his fever usually rises in the afternoon. He also has reddish eruptions on his chest and in the abdominal region.

(3)

a) Identify the disease he could be suffering from.

b) Name its causative agent.

c) Which antibiotic is very effective in treating this disease?

Q.7 Answer the following:

(10)

i) How does presence of fluorides in drinking water affect human health?

(1)

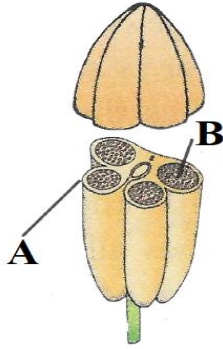
ii) What is the causative agent of Cholera? How does Cholera lead to death?

(2)

iii) Explain the role of bile in digestion of food.

(2)

iv) The following picture shows a part of a flower. Study the figure and answer the questions that follow: (2)

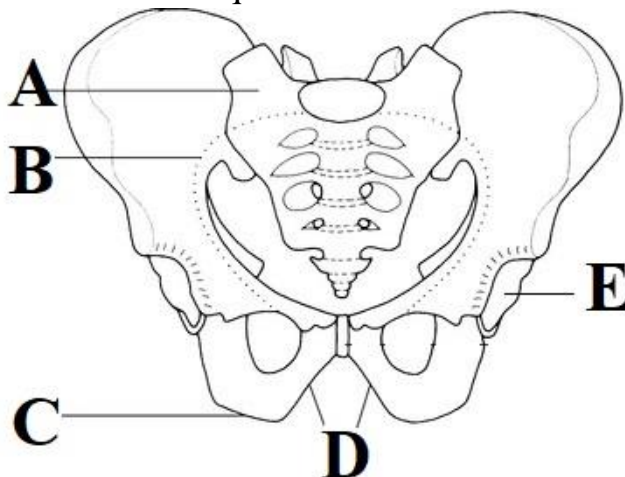


- Name the whorl to which this part belong.
- Label A and B.

v) What is vector? Explain any two ways by which house-fly spreads diseases. (3)

Q.8 Answer the following: (10)

- Write the full form of AIDS. (1)
- Give reasons – (2)
 - Lysosomes are called as suicide bags.
 - WBC are amoeboid.
- Differentiate between the following based on the points given in brackets:
 - Ascariasis and Taeniasis (causative agent) (2)
 - Malaria and Sleeping Sickness (Vector)
- Write four ways through which HIV gets transmitted. (2)
- The following picture shows a diagram of human pelvis. Study the diagram and answer the questions that follow: (3)



- Label parts A, B, C and D.
 - Name the cavity label as E, which bone fits into this cavity.
-