

**GREENLAWNS HIGH SCHOOL**  
**SCIENCE FINAL EXAMINATION 2024-25**

**STD. 7**

**TIME: 2 HR.**

**DATE: 14/02/2025**

**MARKS: 80**

**NOTE:**

- 1] Answer to this paper must be written on the paper provided separately.
- 2] You will not be allowed to write during the first 10 minutes. This time is to be spent in reading the paper.
- 3] The time given at the head of this paper is the time allowed for writing the answers. This paper has 3 pages (5 sides)
- 4] Section A and Section B both are compulsory.
- 5] The intended marks for a question or parts of questions are given in the brackets [ ].

**SECTION A [40 MARKS]**  
**ALL QUESTIONS IN THIS SECTION ARE COMPULSORY.**

**Q.1. Choose the most correct answers to the questions from the given options:**

**[09]**

- i) An example of man-made change is
  - a) Weathering of rocks
  - b) making of covid vaccines
  - c) water cycle
  - d) growth in animals
- ii) The SI unit of heat is
  - a) calorie
  - b) joule
  - c) kilocalorie
  - d) degree Celsius
- iii) The excretory organ which helps in osmoregulation is
  - a) Lungs
  - b) Kidneys
  - c) Skin
  - d) Liver
- iv) The process of deposition is observed in
  - a) frost formation
  - b) changing iodine crystals into its vapours on heating
  - c) freezing of water
  - d) dew formation
- v) A bacterial cell does not have a
  - a) cell wall
  - b) capsule
  - c) cell membrane
  - d) well defined nucleus
- vi) A substance which directly changes from its solid state into its vapour state by absorbing heat is
  - a) mercury
  - b) ice
  - c) moth balls
  - d) sulphur

vii) An example of multicellular organism is

- a) Euglena    b) Chlamydomonas    c) Cycas    d) Amoeba

viii) The symbol of the element which is essential for strengthening of bones is

- a) C    b) Ca    c) N    d) Cl

ix) The microscopic filtering units of kidneys are

- a) Ureters    b) Neurons    c) Nephrons    d) Urinary bladder

Q.2] A] State whether the following statements are true or false. If false correct the statement by changing only the underlined word. [5]

- i) Mushrooms are the only, unicellular form of fungi.
- ii) The petrol is an inflammable substance.
- iii) The function of kidneys is to filter urine.
- iv) The burning of fuel is a slow change.
- v) The bacteria which derive their nutrition from dead, decaying organic materials are called parasitic bacteria.

B] Match the columns and write the pairs. [5]

A	B
i) Antibiotic production	a) Yeast
ii) Curdling of milk	b) Clostridium botulinum
iii) Genetic engineering	c) Streptomyces
iv) Biofertilizer	d) Lactobacillus
v) Food poisoning	e) Mycorrhiza
	f) Bacillus thuringiensis

Q.3] A] Write the symbols of the following elements. [5]

- i) Magnesium    ii) Boron    iii) Neon    iv) Oxygen    v) Beryllium  
vi) Nitrogen    vii) Sulphur    viii) Sodium    ix) Lithium    x) Fluorine

B] Write the names of the elements whose symbols are given below: [5]

- i) Al      ii) K      iii) P      iv) He      v) Si

Q.4] Name the following: [4]

- i) The state (condition) in which two substances kept in contact with each other attain the same temperature and there is no transfer of heat.
- ii) The state in which expansion due to heat is maximum.
- iii) A whip like structure which helps the bacterial cell in locomotion.
- iv) A special preparation of dead / weakened disease causing germs when injected in human body develop immunity against infectious diseases.

B] Fill in the blanks. [4]

- i) The oil glands of the skin secrete \_\_\_\_\_ which is a fatty substance that is released to the skin surface.
- ii) The kingdom \_\_\_\_\_ includes single celled prokaryotic organisms that are microscopic in nature.
- iii) A change that is repeated after a regular interval of time is known as a \_\_\_\_\_ change.
- iv) \_\_\_\_\_ is the medical procedure in which toxins and excess of water is filtered from the blood with the help of a machine.

### **SECTION B [40 MARKS]**

**ALL QUESTIONS IN THIS SECTION ARE COMPULSORY.**

**Q.5]**

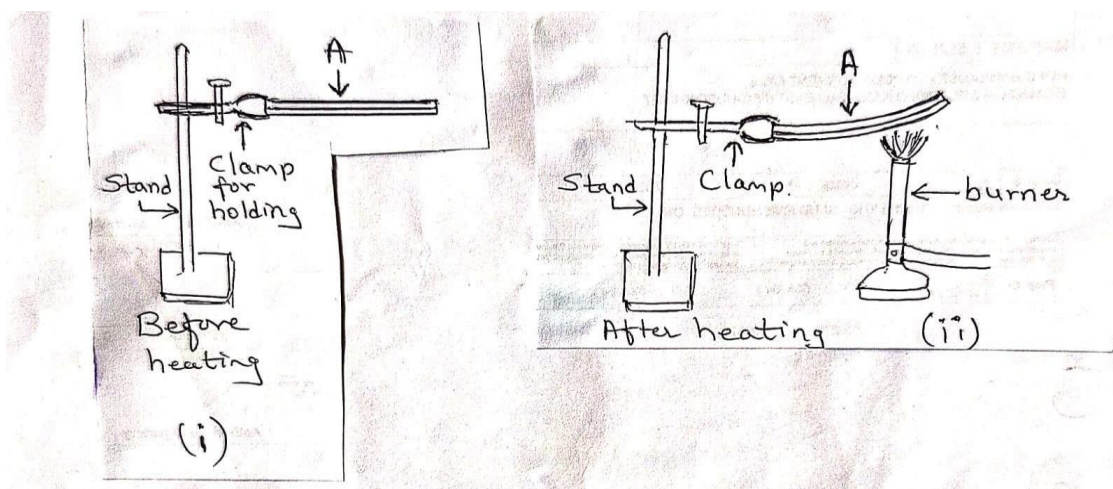
A] Classify the changes given below into Physical changes/ Chemical changes.[4]

- i) Breaking of a chalk into its pieces.      ii) Ripening of fruits.
- iii) Bursting of crackers.      iv) Dissolution of salt in the water.

B] State one difference between an exothermic change and endothermic change. [1]

**Contd.....**

B] Observe the diagram given below and answer the questions given below. [5]



- i) Label the part A.
- ii) What is it made of?
- iii) Write your observation.
- iv) What will happen to part A after cooling? Why?

Q.6] A] Complete the following table by writing your answers as: [6]  
i - , ii - , iii - and so on.

	Urinary Tract Infection	Kidney Stone
Cause (any one)	i	iv
Symptom (any one)	ii	v
Preventive measure (any one)	iii	vi

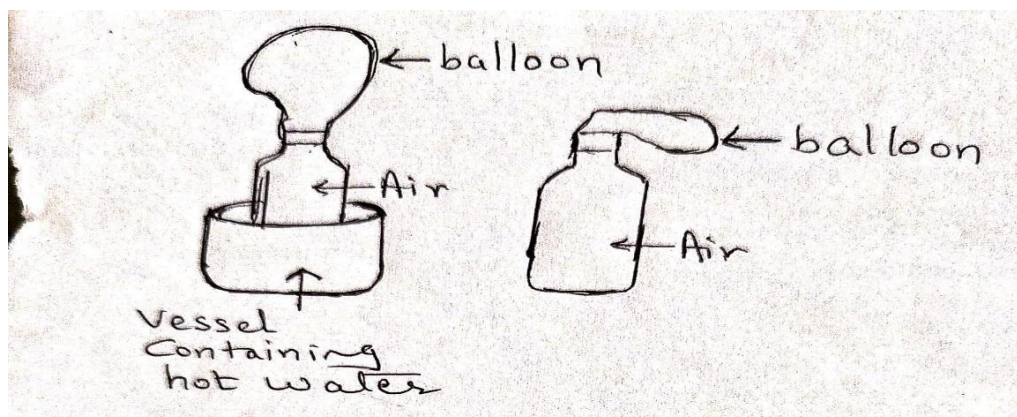
B] Give any 2 advantages of classification. [2]

C] Write how the following fungi are harmful. (Give one point each) [2]  
i) Mould ii) Polyporus

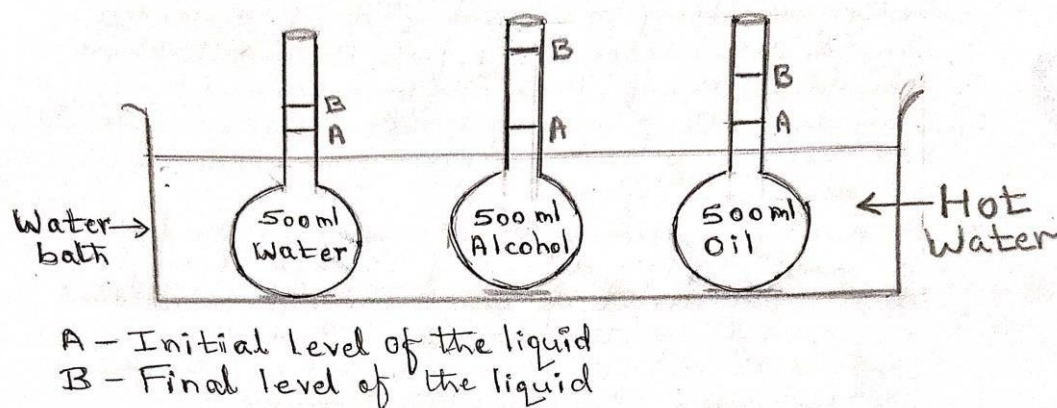
Q.7 A] What changes take place in a substance when it undergoes a thermal expansion? [1]

B] Name any 5 conditions that control a chemical reaction. (Do not explain. Write only the names.) [5]

C] Write your observation and conclusion with respect to the diagram given below: [2]



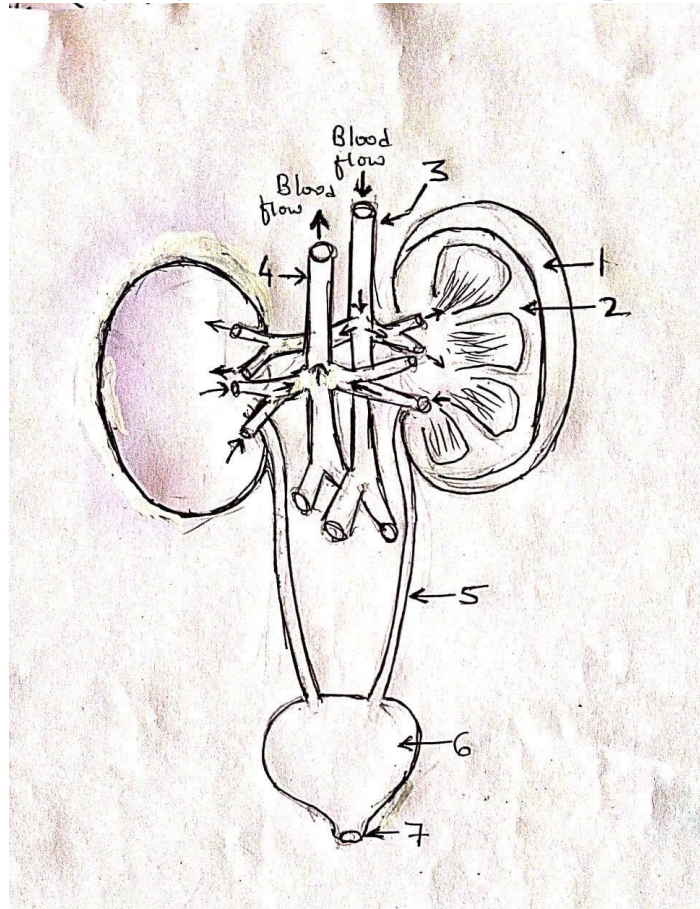
D] Observe the figure given below and answer the questions that follow: [3]



- i) Name the liquid which shows
  - a) maximum expansion
  - b) minimum expansion
- ii) What conclusion can be drawn from the above figure?

Contd....

Q.8] A] Observe the figure given below and answer the questions that follow



- i) Which organ system does the above figure indicate? [1]
- ii) Label the parts 1,2,5 and 6. [4]
- iii) Name the muscles present in part 7 which control its opening and regulate the flow of urine. [1]
- iv) List one difference between the parts numbered as 3 and 4 with respect to the type of blood carried by them. [1]

B] Classify the following changes as per the instructions given in the brackets. [2]

- i) Growth of a baby, Melting of an ice and freezing of water (Reversible change/ Irreversible change)
- ii) Ripening of a fruit, curdling of milk meant for drinking. (Desirable/ Undesirable change)

C] i) Which alloy is used in watches and various temperature sensitive devices? [1]

ii) Name the elements present in the alloy mentioned by you in Q.8 B- I [1]

D] Why there is a gap kept between the railway tracks? [1]