

**GREENLAWNS HIGH SCHOOL**  
**TERMINAL EXAMINATION 2017-18**

**SUB : BIOLOGY**  
**TIME : 2 HOURS**

**CLASS : IX**  
**MARKS : 80**

---

Answers to this paper must be written on the paper provided separately.  
You will not be allowed to write during the first 10 minutes. This time is to be spent in reading the question paper.

Section I is the compulsory Section.

Section II contain 5 questions. Solve any 4 questions.

**SECTION I**

**Question 1**

[10]

A) Name the following:-

- i. Protein present in skin
- ii. Substance produced by white blood cells in response to an antigen.
- iii. Duct that joins the hepatic duct to the cystic duct.
- iv. Opening in the skull through which the spinal cord passes.
- v. Fluid around bones that serves as a cushion.
- vi. Flap like structure on the trachea
- vii. A sexually transmitted disease.
- viii. A disease due to deficiency of proteins
- ix. An element associated with goitre
- x. Currency of energy.

b) With respect to antibiotics.

[5]

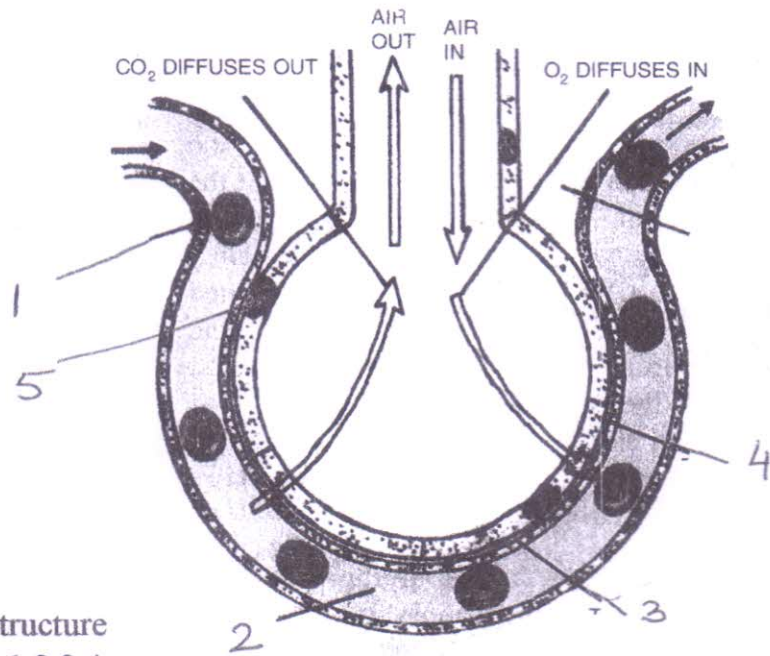
- i. Name the scientist who discovered the first antibiotic.
- ii. Give the name of the fungi which was first discovered.
- iii. Give the difference between the mode of action of penicillin and streptomycin.
- iv. Name the vaccine used for  
A → Polio  
B → TB
- v. When is world Health Day celebrated
- vi. List 2 uses of antibiotics.

c) Give exact location of .

[5]

- i. Stomata
- ii. Goblet cells
- iii. Atlas
- iv. Larynx
- v. Lenticels

d) Drawn below is a diagram showing the smallest functional unit of a lung. [5]

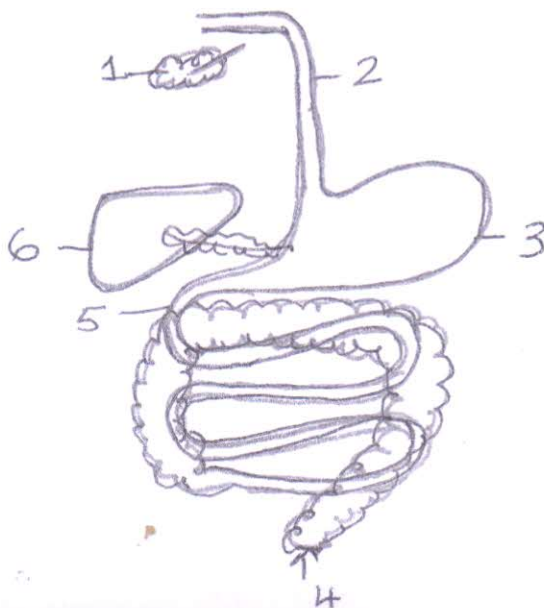


- i. Name the structure
- ii. Label parts 1,2,3,4
- iii. What is the importance of part 5
- iv. Carbon dioxide is transported to the lungs by the blood in 2 forms. Name them.
- v. What is the importance of the branching of bronchioles.

e) Give 1 difference between the following pair. [5]

- i. Krebs cycle/ glycolysis (site of reaction)
- ii. Anaerobic respiration in plants/ anaerobic respiration in animals (product)
- iii. Passive and active immunity (definition)
- iv. Penicillin/ streptomycin (source)
- v. Endemic/epidemic

f) Drawn below is a diagram showing the digestive system in man [7]



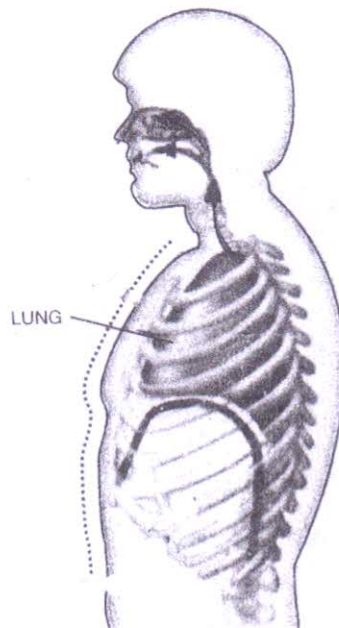
- i) label part – 1,5
- ii) Define assimilation
- iii) What is the importance of defaecation.
- iv) Part 6 produces a juice. List 2 effects of the juice.
- v) Explain with the help of equations the effect of any 2 enzymes.
- vi) How is peristalsis important?
- g) Draw a diagram to show the T.S. of an incisor (Give 6 labellings) [3]

### SECTION – II

Solve any 4 from the given 5 questions

#### Question 2

- a) Study the diagram drawn above and answer the questions that follow. [5]

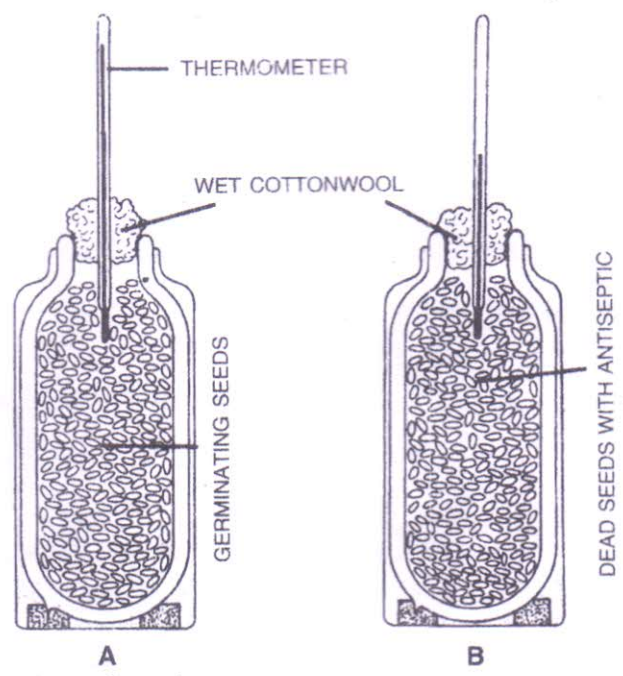


- i. Identify the phase of the respiratory cycle shown above.
  - ii. Give 2 reasons for the above answer.
  - iii. Explain the role of the diaphragm in the above phase.
- 
- b) Define the following : [5]
    - i. Digestion
    - ii. Antagonistic muscles
    - iii. Respiration
    - iv. Antibiotics
    - v. Immunity

Question 3.

a) Given below is a diagram showing a particular set - up.

[5]



- i) What is the aim of the experiment?
- ii) What observation do you see in A and B? Why?
- iii) What is the use of the carbolic acid added to flask B.
- iv) Give an equation to show aerobic respiration in plants.

b) Choose the odd one out.

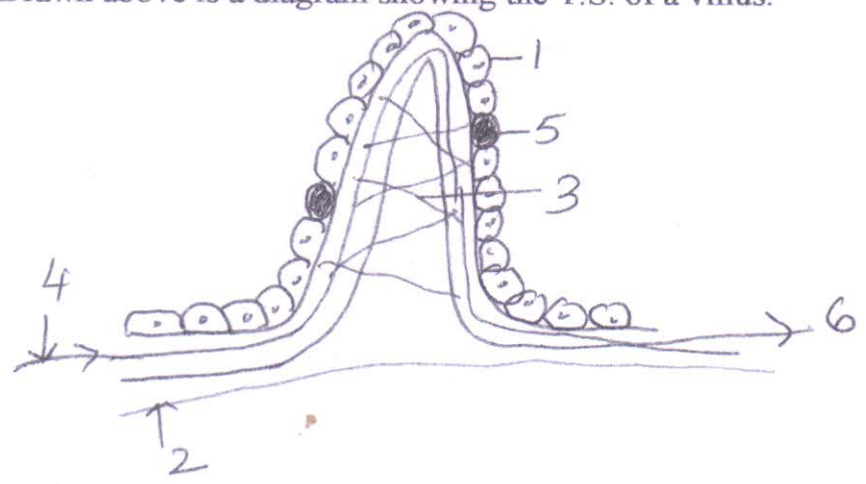
[5]

- i) Carbolic acid, iodine, mercurochrome, Bordeaux mixture, boric acid
- ii) Saliva, tears, sweat, hydrochloric acid.
- iii) bronchi, ribs, lung, alveoli, bronchioles
- iv) Carbon dioxide, ethanol, lactic acid energy, water vapour
- v) salivary gland, stomach, rectum, oesophagus, intestines

Question 4.

[5]

a) Drawn above is a diagram showing the T.S. of a villus.



... 4/ -

- i. Label parts 1,2,3,4
- ii. What is the importance of part 5
- iii. Where does part 6 lead to? Why?
- iv. Give 2 reasons how the ileum is adapted to carry out its function.

b) Give importance of the following

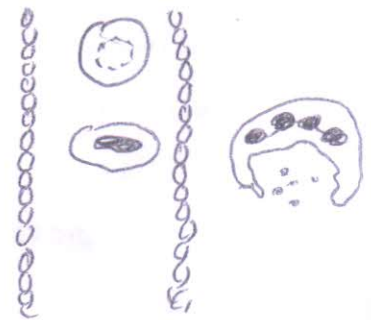
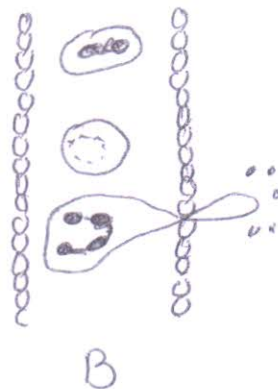
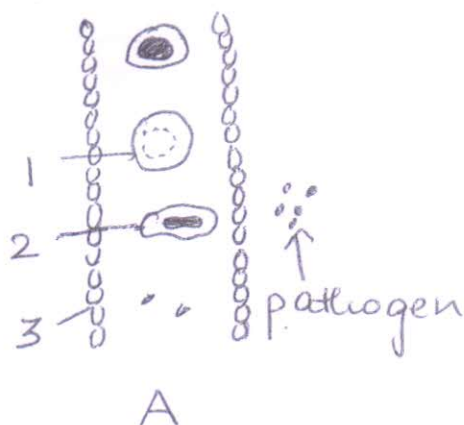
[5]

- i) C shaped cartilage in trachea
- ii) Heparin
- iii) Cartilage
- iv) Shivering & chattering of teeth.
- v) coughing & sneezing

Question 5.

[5]

a)



- i) Identify 1 and 2.
- ii) Why is 3 single layered
- iii) Define the process in B
- iv) What is the importance of process taking place in C
- v) Name the WBC drawn in the above diagram. B

b) Draw an animal cell and label the following parts.

[3]

- i) Which initiates cell division as A
- ii) Which secretes enzyme and hormone as B
- iii) Which synthesizes proteins as C

- iv) Which carries out oxidation of glucose as D
- v) Give 2 difference between cell wall and cell membrane.

c) List any 4 characteristics of viruses.

[2]

Question 6.

a) Give reasons for the following statements.

[5]

- i. Salvarson is banned.
- ii. Yeast is added to flour to make bread and cake
- iii. It is difficult to study the protoplasm
- iv. It is necessary to eat vegetables
- v. Our legs pain when we exercise for too long.

b) With respect to AIDS

[5]

- i) Give its full forms
- ii) Name 4 ways in which it is spread
- iii) Name the type of pathogen that causes AIDS.
- iv) Name the vaccine for polio and tuberculosis
- v) Give the causative agent of

A → Tuberculosis

B → Diphtheria