

GREENLAWNS HIGH SCHOOL
TERMINAL EXAMINATION YEAR 2019-20

SUBJECT : BIOLOGY
TIME : 2 HOURS

CLASS : IX
MARKS :80

Answers to this paper must be written on the paper provided separately. You will not be allowed to write during the first 10 minutes. This time is to be spent in reading the question paper.

- Section I – All questions are compulsory
- Section II – Any 4 questions out of 5 to be answered.

SECTION – I

All questions are compulsory.

Q.I. A. Name the following: -

[10]

1. Grape- sugar
2. The blood serum protein produced in response to injected antigens.
3. Largest gland of the body.
4. The first wonder drug antibiotic.
5. The phylum to which flatworms belong.
6. A preparation consisting of weakened or dead germ substances.
7. Green coloured plastids.
8. Involuntary muscles found only in the walls of the heart.
9. The outer thinner part of the skin.
10. The element required for forming haemoglobin.

B] Classify the following organisms as vertebrates or invertebrates. Write the answers in a tabular form.

[5]

hydra, carps, emu, starfish, leeches, clam, spiders, rat, newt, ascaris

C] Differentiate between the following.

[5]

1. Meibomian glands and Ceruminous glands. (function)
2. Kwashiorkor and Marasmus. (Cause)
3. Kingdom Monera and Kingdom Protista. (Nucleus)
4. Animal cell and Plant cell. (presence/ absence of cell wall)
5. Erepsin and Amylopsin. (product of digestion)

D] Give one function of:

[5]

1. Ribosomes
2. Sclerenchyma
3. Canines
4. Subcutaneous Fat
5. Oesophagus

E] Define

[5]

1. Moulting
2. Assimilation
3. Protoplasm
4. Immunity
5. Digestion

F] Complete the following enzymatic actions: (Write the complete action in your answer booklet) [5]

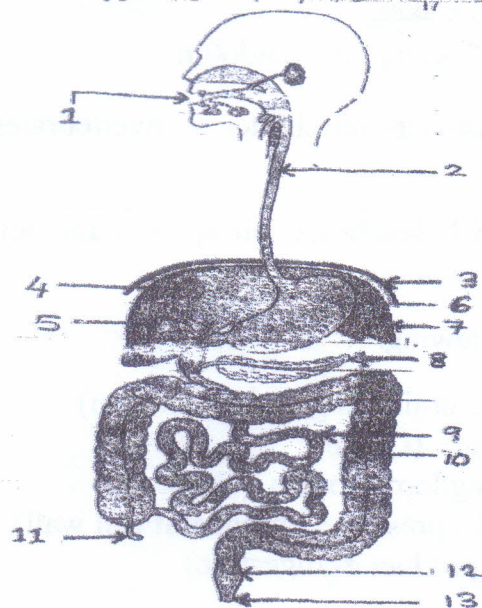
- | | | |
|--------------------|--------|-------|
| 1. Proteins | —————> | _____ |
| 2. Casein | —————> | _____ |
| 3. Leftover Starch | —————> | _____ |
| 4. Maltose | —————> | _____ |
| 5. Emulsified fat | —————> | _____ |

G] Draw the microscopic structure of an intestinal villus. Label all the parts. Give one function of villus. [5]

SECTION – III]

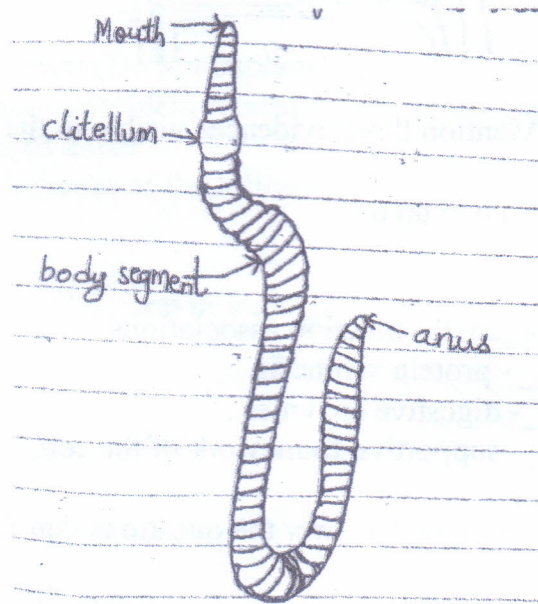
(Attempt any four questions out of five)

Q.II. The figure given below represents the digestive system of man. Observe it carefully and answer the questions that follow: [10]



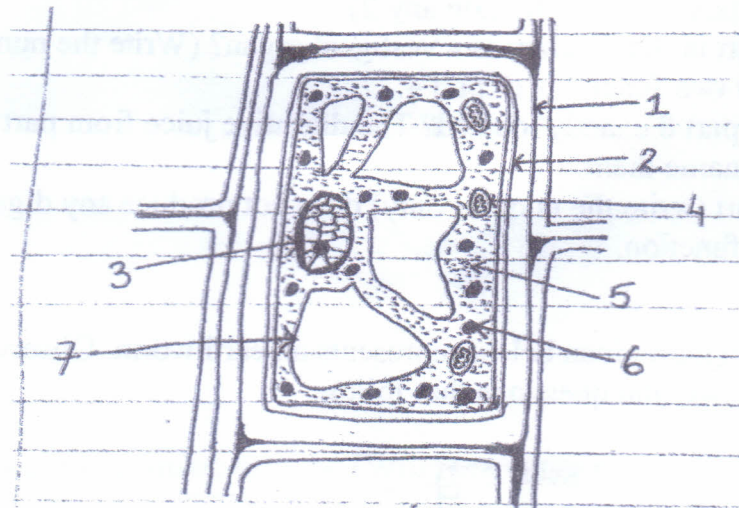
- 1) Name the parts numbered 1,6,9,10,12 and 13.
- 2) Which parts (give numbers only) of the digestive system shown here are not parts of alimentary canal? (Mention any 2)
- 3) Which part in the diagram is a vestigial organ? (Write the number and the name)
- 4) Write any two functions of part 4.
- 5) Where is part 8 exactly located? The digestive juice from part 8 contains three enzymes name them.
- 6) Which part (write the number only) does not produce any digestive enzyme. Write its function.

Q.III. A] The diagram given below represents an earthworm. Observe it carefully [7] and answer the questions that follow.



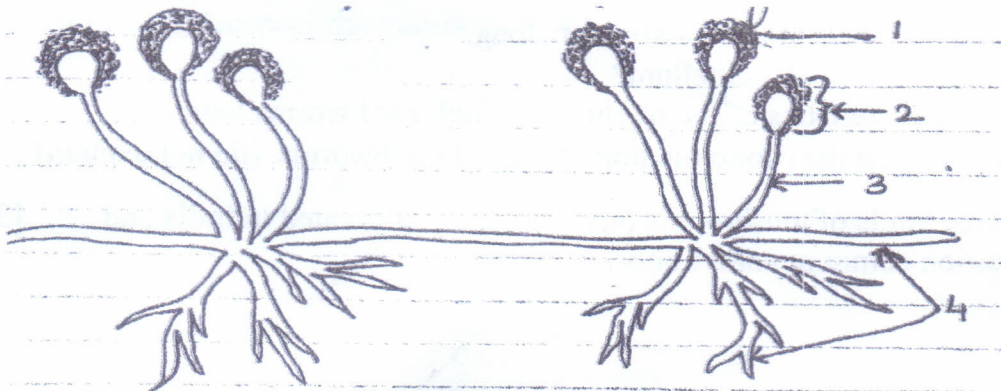
- 1) Name the Phylum to which earthworms belong.
 - 2) What is the function of a clitellum?
 - 3) List three characteristics of the phylum to which earthworms belong.
 - 4) List two points on the economic importance of earthworms. (do not explain)
- B] Name the three kinds of mushrooms that are widely cultivated in India and abroad (Mention common names only) [3]

Q.IV. Observe the given diagram carefully and answer the questions that follow. [10]



- 1) Identify the given cell. Mention three evidences visible in the diagram to support your answer.
- 2) Which material is part 1 made up of?
- 3) Label parts 2,3,5 and 7
- 4) Give one function of part 3.
- 5) Fill in the blanks with organelle-function associations.
 - a) _____ - protein synthesis.
 - b) _____ - digestive enzymes .
 - c) _____ - supportive framework of the cell.

Q.V. A] Observe the given diagram and answer the questions that follow: [10]



- 1) Identify the organism. List four places it grows.
- 2) Label parts 1,2,3 and 4.
- 3) What purpose does part 4 serve?
- 4) What is the function of part 2

B] Complete the given table. (Draw the table in your answer booklet)

Mineral elements/ Vitamins	Deficiency diseases
1) Calcium	_____
2) _____	Goitre
3) Vitamin C	_____
4) _____	Night blindness
5) Vitamin B ₃	_____
6) Vitamin B ₁	_____

Q.VI. Answer the following questions.

[10]

- 1) List three uses of antibiotics.
- 2) List the following: (Do not explain)
 - a) three common problem related to sebaceous gland
 - b) three parts of a hair
- 3) Mention the location of the following.
 - a) Cellulose
 - b) Glycogen
- 4) Give two uses of bacteria in industry.